



# IMSH™

Society for Simulation in Healthcare

JANUARY 10 – 14, 2025 | ORLANDO, FL

25<sup>TH</sup> ANNIVERSARY

# LOOKING BACK REACHING FORWARD



## ONSITE PROGRAM GUIDE

[IMSH2025.ORG](https://IMSH2025.ORG) | [#IMSH2025](https://twitter.com/IMSH2025)  





*Integrated Solutions. Elevated Healthcare.*

**COMPETENCY  
AND BEYOND**

**VISIT  
BOOTH  
#400**

## Presidential Sponsor

*Solutions for a Holistic Approach to  
Competency Based Education*

EMS provides a premier suite of integrated solutions designed to optimize simulation-based education and competency tracking that elevates healthcare learning to **Competency and Beyond**.

Spanning competency management and analysis tools, advanced simulation management systems, to the cutting-edge Training in Motion® mobile simulation platform, EMS delivers comprehensive, flexible, and cost-effective training infrastructures that better prepare learners for the challenges of modern healthcare.



Learn how EMS solutions help navigate the  
demands of Competency and Beyond Education  
at  
[ems-works.com/competency](https://ems-works.com/competency)

### EMS Solutions

Competency Tracking | Simulation Management

Mobile Simulation Training

[ems-works.com](https://ems-works.com)

Education Management Solutions, LLC  
[info@ems-works.com](mailto:info@ems-works.com) | 1-877-EMS-5050 | [ems-works.com](https://ems-works.com)



**IMSH**<sup>TM</sup>

Society for Simulation in Healthcare

JANUARY 10 – 14, 2025 | ORLANDO, FL

# GENERAL INFORMATION





Society for Simulation in Healthcare™

# GENERAL INFORMATION

## WELCOME



**Welcome to the International Meeting on Simulation in Healthcare (IMSH) 2025! It's an honor to bring together so many leaders, learners, and pioneers in healthcare simulation from around the world.**

This year's theme, "Looking Back, Reaching Forward," serves as a powerful reminder of our journey through the past and the remarkable potential we hold to shape the future together.

Over the past 25 years, IMSH has been at the forefront of healthcare simulation, witnessing revolutionary advancements in our approaches to simulation education, patient safety, patient outcomes, and professional development. Each new technique, study, and tool has built upon the foundation laid by those before us.

As we gather here, we invite you to reflect on the milestones and partnerships that have shaped our field. Let's celebrate the resilience and knowledge that continue to propel the growth of simulation in healthcare.

However, IMSH 2025 isn't just about reflection; it's a proactive call to action. Throughout our sessions, workshops, and discussions, we aim to explore cutting-edge technologies, broaden our horizons, and set ambitious new goals. Whether you're here to acquire new skills, seek fresh perspectives, or network with peers, your dedication to advancing simulation is key to our collective success.

Let us embrace this opportunity to learn, connect, and envision the future together. At IMSH 2025, we welcome tomorrow's challenges and opportunities with the tools, knowledge, and networks we foster today. Together, we are not merely moving forward; we are driving transformation in healthcare.

Thank you for joining us and for your ongoing commitment to enhancing patient care and safety and the impact you make every day. I am excited to share an inspiring and transformative experience with you all at IMSH 2025.

I am looking forward to seeing you in the halls and on the Exhibition Hall floor!

Sincerely,

A handwritten signature in black ink that reads "Dr. Barry Issenberg". The signature is fluid and cursive.

**Dr. Barry Issenberg**

President, Society for Simulation in Healthcare



# SSH STAFF

EXECUTIVE  
OFFICE



**Jennifer Manos, MBA,  
MSN, RN**  
Executive Director  
jmanos@ssih.org



**Andrew Spain, PhD, MA, EMT-P**  
Associate Executive Director  
aspain@ssih.org



**Taylor Jessup**  
Executive Assistant  
tjessup@ssih.org

ACCREDITATION &  
CERTIFICATION



**Kristyn Gadlage, BSE**  
Director of Accreditation  
kgadlage@ssih.org



**Rachel Araujo**  
Director of Certification  
raraujo@ssih.org



**Elizabeth (Betsy) Holzwarth, BA**  
Accreditation & Certification Coordinator  
bmisenko@ssih.org



**Lizzie Brown**  
Accreditation Coordinator  
lbrown@ssih.org

DEVELOPMENT



**Jeff Hale, CFRE**  
Director of Development  
jhale@ssih.org

LOOKING BACK  
REACHING  
FORWARD



**Trenell Croskey, BS, MCHM**  
Director of Continuing Education  
tcroskey@ssih.org



**Hannah Trainer, BS**  
Senior Coordinator  
htrainer@ssih.org



**Kayla Hendricks, MSN, RN**  
Educational Program Coordinator  
khendricks@ssih.org



**Bailee Bailey, MSN, RN**  
Educational Program Coordinator  
bbailey@ssih.org

**EDUCATION**



**Curtis Kitchen, CAE**  
Director of Marketing  
ckitchen@ssih.org



**Jared Smith, MISM**  
Website and Database Coordinator  
jsmith@ssih.org

**MARKETING**



**Judy Larson**  
Director of Meetings & Exhibits  
jl Larson@ssih.org



**Olivia Rosace Fleenor**  
Senior Meetings & Exhibits Coordinator  
ofleenor@ssih.org

**MEETINGS & EXHIBITS**



**Ashley Grossman, BS**  
Director of Membership  
agrossman@ssih.org



**Becca Fletcher, BS**  
Senior Membership Coordinator  
bfletcher@ssih.org



**Patricia Morgan, MEd, MPA**  
Membership Coordinator  
pmorgan@ssih.org

**MEMBERSHIP**

# GENERAL INFORMATION

## THANK YOU TO THE SSH BOARD OF DIRECTORS

\* - SSH Accredited Program

### EXECUTIVE COMMITTEE



**Barry Issenberg, MD, FSSH**  
Gordon Center for Simulation and  
Innovation  
Miami, FL  
President



**Jared Kutzin DNP, MS, MPH,  
RN, CHSOS, FSSH, FAAN**  
The Mount Sinai Hospital,  
New York, NY  
President-Elect



**Jayne Smitten, PhD, MEd,  
RN, CHSE-A, FSSH**  
Hawaii Pacific University College  
of Health & Society  
Honolulu, HI  
Immediate Past-President



**Michael Spooner, MD, MBA,  
FSSH**  
Mercy One North Iowa Heart Center  
Mason City, IA  
Treasurer



**Matthew Charnetski, MSMS,  
CHSE, CHSOS, FSSH**  
Dartmouth-Hitchcock Medical  
Center\*  
Lebanon, NH  
Secretary



**Connie M. Lopez, MSN, CNS,  
CPHRM, CHSE-A, FSSH**  
Kaiser Permanente Northern  
California Region Risk Management  
& Patient Safety  
Oakland, CA  
Board Liaison

### AT-LARGE MEMBERS



**Kristen Brown, DNP,  
CRNP, CPNP-AC,  
CHSE-A, FAAN**  
Johns Hopkins University  
School of Nursing,  
Baltimore, MD



**Aaron Calhoun, MD,  
FAAP, FSSH**  
University of Louisville,  
Pediatric Critical Care  
Louisville, KY



**Marie Gilbert, DNP, RN,  
CHSE-A**  
Central California Center for  
Excellence in Nursing, California  
State University, Fresno  
Fresno, CA



**Wendy LaGrange**  
Wallcur, LLC  
San Diego, CA



**Kim Leighton, PhD, RN,  
CHSE-A, CHSOS, ANEF,  
FSSH, FAAN**  
ITQAN Clinical Simulation &  
Innovation Center, Hamad  
Medical Corp.\*  
Doha, Qatar



**Keith Littlewood, MD,  
FASA, FSSH**  
University of Virginia, Schools of  
Medicine and Nursing Simulation  
Charlottesville, VA



**John M. O'Donnell, RN, MSN,  
CRNA, DrPH, FSSH**  
University of Pittsburgh Medical  
Center (UPMC) and WISER  
Pittsburgh, PA



**Dawn Schocken,  
MPH, PhD, FSSH**  
USF Health Morsani  
College of Medicine\*  
Tampa, FL



**Jarrod Young, MBA,  
BSE, CHSOS-A**  
Center for Healthcare  
Improvement and Patient  
Simulation @ UTHSC  
Memphis, TN



### EXECUTIVE DIRECTOR

**Jennifer Manos,  
MBA, MSN, RN**  
Cincinnati, OH





# WELCOME TO IMSH2025!

Friends and colleagues,

Welcome to the 2025 International Meeting on Simulation in Healthcare!

Thank you for joining us in Orlando, Florida as we are Looking Back, Reaching Forward for our 25th Anniversary. While anniversaries typically focus on the past, we are also looking forward. We have invited you, our community members to share how healthcare simulation has expanded its reach and what is next on the horizon. This year's proceedings will inspire us as we continue to push the boundaries of healthcare education while paying tribute to the amazing work of the past 25 years.

IMSH continues to trend upward in record-setting fashion. Building on the success of IMSH 2024 in San Diego, this year promises to be the best IMSH yet! The agenda is packed with over 700 different forms of industry-leading content, including amazing keynotes, state-of-the-art exhibitors, innovative research, and exciting professional development sessions.

For those who are unable to join us in person, IMSH Delivers! offers a high-level virtual experience that continues to serve the needs of our growing community. Make sure to check out some of the amazing activities available at this year's meeting. Details of these events (and more) can be found in the Program:

- Celebrate the achievements of colleagues and friends at The President's Diamond Ball
- Get a workout in during the #SimFit25 Fun Run/Walk
- Support the SSH Fund at our Cornhole Tournament
- Take a walk down the hall of history to celebrate the past 25 years.

There's a reason why more than 120+ exhibiting partners have signed on at IMSH as part of the show and why our sponsorship and advertising partners believe in supporting IMSH, too. We look forward to meeting you this week to share as we look back and reach forward!

Sincerely,

**The IMSH 2025 Planning Team**

**Kati Maxkenzie, MBA, EMT-P, CHSESHS, CHSOS-A, CHSE**

**Kyle Johnson, PhD, RN, CHSE, ANEF**

**Shannon DiMarco, MSHS, CHSOS**

# *Elevate. Every Day.*<sup>TM</sup>

Every Learner.  
Every Moment.  
Every Outcome.

---

Visit us at Booth 101



FORMERLY CAE HEALTHCARE

LOOKING BACK  
REACHING  
FORWARD



# GENERAL INFORMATION

## REGISTRATION

**Location:** West Concourse Lobby

### Registration Hours

<b>Thursday:</b> 11:00 AM – 4:30 PM	<b>Sunday:</b> 7:00 AM – 4:30 PM
<b>Friday:</b> 7:00 AM – 4:30 PM*	<b>Monday:</b> 7:00 AM – 4:30 PM
<b>Saturday:</b> 7:00 AM – 4:30 PM	<b>Tuesday:</b> 7:00 AM – 9:00 AM

\*Check in for President's Diamond Ball Attendees will be open at 6 PM (outside of Rosen Centre Grand Ballroom A/B/C)

## SSH CENTRAL

**Location:** West Concourse Lobby

### SSH Central Hours

<b>Thursday:</b> 11:00 AM – 4:30 PM	<b>Sunday:</b> 7:00 AM – 4:30 PM
<b>Friday:</b> 11:00 AM – 4:30 PM	<b>Monday:</b> 7:00 AM – 4:30 PM
<b>Saturday:</b> 7:00 AM – 4:30 PM	<b>Tuesday:</b> 7:00 AM – 9:00 AM

## GENERAL INFORMATION

Stop by SSH Central to meet SSH Staff, learn more about SSH Certification and Accreditation, get other event info, and meet your colleagues!

You'll also find:

- IMSH Information
- IMSH Attendee Map (show us where you're from!)
- SSH Fund: Pushing the boundaries of innovation and research and expanding access to the Society
- Foundation for Healthcare Simulation Safety

## PRESENTER CENTER

**Location:** West Concourse Lobby - Cirtus Cafe

Whether you are faculty for an educational course, presenting an abstract, or showcasing a new idea, stop by the SSH Presenter Center to test your presentation equipment.

Any other onsite questions about your presentation? Presenter Center is your place!

### Presenter Center Hours

**Thursday:** 11:00 AM – 4:30 PM

**Sunday:** 7:00 AM – 4:30 PM

**Friday:** 7:00 AM – 4:30 PM

**Monday:** 7:00 AM – 4:30 PM

**Saturday:** 7:00 AM – 4:30 PM

**Tuesday:** 7:00 AM – 11:00 AM



# How to Find the Right Video Solution Partner

## Identify what matters most to you and determine budget:

- Image and audio quality
- Easy to use software
- Reliable real-time streaming
- Multiple video views
- Onsite and offsite usability
- Scales with program growth
- Security compliance
- Mobile capture options

## Conduct research on vendors who meet your requirements:

- Can they provide equipment + software + installation services?
- Can they meet your project timeline?
- What training is provided & included?
- What are up-front and annual costs?
- How and when is support offered?
- What is their response time and quality of response to your inquiries?

## Involve the people who play an important role in deciding the best vendor to select.

Watch how SCC leverages VALT across their entire Health Sciences building.



Choose your A/V system partner based on what matters most to you.



**BOOTH 1108**  
ipivs.com



## GENERAL INFORMATION

### CHSE AND CHSOS EXAM INFORMATION

While we are not offering the CHSE or CHSOS exams on site at IMSH this year, there are still options to test if you completed your application and have been approved to take your exam. You can take your exam in your hotel room using live remote proctoring or schedule your exam at a nearby testing center in Orlando.



## SSH FUND

One great way for your company to invest in the future of healthcare simulation is to support the SSH Fund. Donations to the SSH Fund provide resources for initiatives like research grants, scholarships, SimVentor Awards cash prizes, and a fund for the Chad Epps lecture. Show your support, make an investment in the future field of healthcare simulation, and receive benefits that complement those you get as an exhibitor or sponsor. See SSH Director of Development Jeff Hale at SSH Central or go to [sshfund.org](http://sshfund.org) to learn more.



*Pushing the boundaries of innovation and research  
and expanding access to the Society.*

### Beverlee Anderson Scholarship Recipients



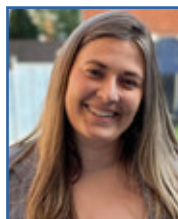
**Mustfa K. Manzur,**  
MD MPH MS  
Montefiore Medical  
Center  
Bronx, NY



**Laura Schumpert, DNP, RN**  
Southeast Missouri State  
University  
Cape Girardeau, MO



**Aleksandrs Oborins,**  
Development Manager  
for Simulation-Based  
Education and Medical  
Student  
Riga Stradiņš University  
Medical Education  
Technology Centre  
Latvia



**Helen Welsh, Media and  
VR Producer and  
Simulation Technician**  
Maudsley Learning / South  
London and Maudsley NHS  
foundation Trust  
London, United Kingdom

## ACCREDITATION STATEMENT

In support of improving patient care, the Society for Simulation in Healthcare (SSH) is jointly accredited by the Accreditation Council for Continuing Medical Education (ACCME), the Accreditation Council for Pharmacy Education (ACPE), and the American Nurses Credentialing Center (ANCC), to provide continuing education for the healthcare team.

This activity was planned by and for the healthcare team, and learners will receive a maximum of 52 Interprofessional Continuing Education (IPCE) credits for learning and change.



JOINTLY ACCREDITED PROVIDER™  
INTERPROFESSIONAL CONTINUING EDUCATION

## OBTAINING CREDIT FOR ATTENDANCE

Make sure to have your badge scanned as you enter the classroom in order to receive credit. Be sure to complete your evaluations, for each course you attend, before the June 30, 2025 deadline. Following IMSH, you will be able to view your transcript and obtain IPCE to view your transcript and obtain your Interprofessional Continuing Education (IPCE) credit certificate. IPCE for LIVE is done in TMI website; virtual is done in live learning center.

## DISCLOSURES

The IMSH 2025 Planning Team and SSH Staff have no financial relationships with ineligible companies. Individual presenter disclosures are available on the IMSH Scheduler web page.

## SSH Presents: Accreditation Application Readiness

Friday, Jan. 10  
12:30-4:30 PM

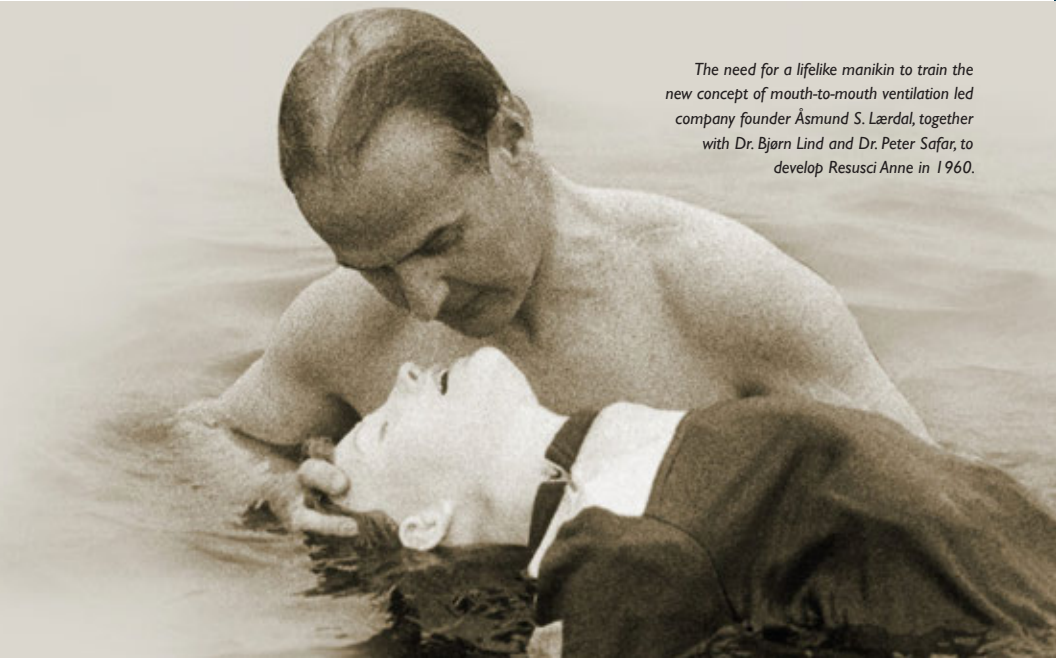
Attendees will learn about the application process and connect with reviewers about specific areas of accreditation that interest their program!





**Laerdal**  
helping save lives

*The need for a lifelike manikin to train the new concept of mouth-to-mouth ventilation led company founder Åsmund S. Lærdal, together with Dr. Bjørn Lind and Dr. Peter Safar, to develop Resusci Anne in 1960.*



## Transforming Healthcare Together: 60 Years of Partnership and Innovation

For over 60 years, as a family-owned private business, Laerdal Medical has taken great pride in building long-term relationships, listening to our clients' needs, and designing solutions to meet them. We work in partnership with healthcare providers to help transform the way they work to improve both quality and efficiency. Our solutions are designed to develop and maintain skills, enhance clinical decision-making, and strengthen communication and teamwork.

**Learn more about our enduring commitment to  
improving patient outcomes at booth 601**







LOOKING BACK  
REACHING  
FORWARD

## FOOD & BEVERAGE

Your IMSH registration includes plenary sessions, general session educational courses, program materials, exhibit hall access and receptions, coffee breaks and three lunches. Receptions may include a cash bar option for attendees.

Coffee and tea will be available in the Exhibit Hall during hall hours. Coffee and tea will be available prior to all Plenary Sessions.

Additional food in the Exhibit Hall includes:

### **SATURDAY**

**12:30 PM – 2:00 PM:** Lunch Open

**4:30 PM – 6:00 PM:** Reception with beverages and light snacks.

### **SUNDAY**

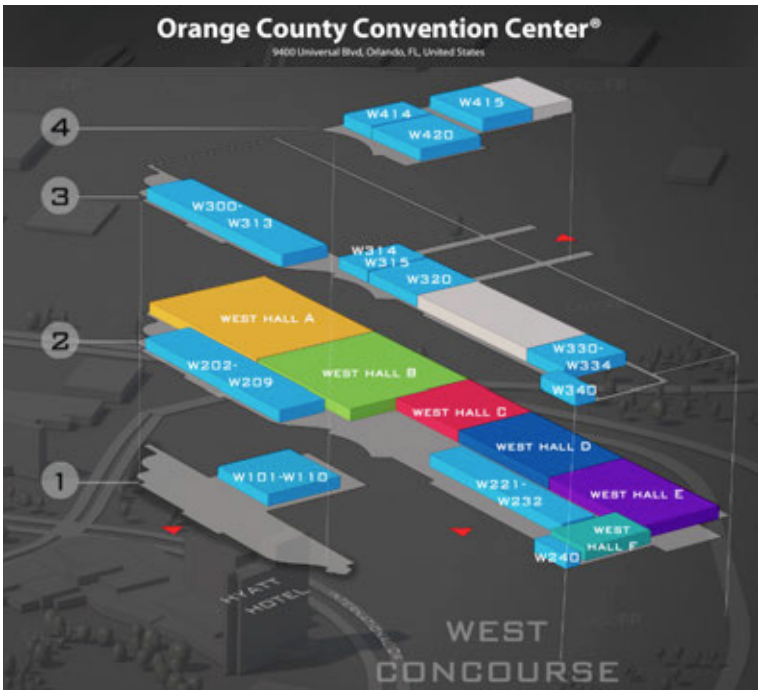
**11:30 AM – 2:00 PM:** Lunch Open

### **MONDAY**

**11:30 AM – 2:00 PM:** Lunch Open

# MAPS

## ORANGE COUNTY CONVENTION CENTER



# Thank you, SSH 360 Sponsors!

Presidential | IMSH2025 App



## Platinum



## Gold



# WIFI



**SSID: SSHIMSH2025**

**PW: #IMSH2025**

# HEALTHCARE SIMULATION 2050: BUILDING A BETTER FUTURE TOGETHER

“This pre-conference forum isn’t just an event; it’s a movement towards safer, more effective healthcare.”

- SSH President Dr. Barry Issenberg, FSSH

This forum will bring together simulation experts and healthcare leaders to discuss the current state of healthcare simulation and envision its future.

## SCHEDULE

(As of 10/31/2024. Subject to change)

### THURSDAY, JAN. 9

- 1:00pm – 2:00pm:** General Opening Session
- 2:00pm – 2:15pm:** Break and Move into Break-Out Sessions
- 2:15pm – 3:30pm:** Breakout Session 1
- 3:30pm – 3:50pm:** Attendee Break
- 3:50pm – 5:05pm:** Breakout Session 2
- 5:15pm – 5:30pm:** Day 1 Closing General Session
- 5:30pm – 7:00pm:** Cocktail Reception @ Rosen Centre

### FRIDAY, JAN. 10

- 7:30am – 8:15am:** Continental Breakfast
- 8:30am – 8:50am:** Day 2 Opening General Session
- 9:00am – 10:15am:** Breakout Session 3
- 10:15am – 10:30am:** Attendee Break
- 10:30am – 12:30pm:** General Closing Session



**IMSH**<sup>TM</sup>

Society for Simulation in Healthcare

JANUARY 10 – 14, 2025 | ORLANDO, FL

# PROGRAM SCHEDULE





# PROGRAM SCHEDULE

## SCHEDULE AT A GLANCE

### Thursday, January 09, 2025

8:00 AM – 5:00 PM	SSH Board of Directors <i>(invitation only)</i>
8:00 AM – 5:00 PM	Exhibitor Move in and set up
11:00 AM – 4:00 PM	Registration
11:00 AM – 4:00 PM	SSH Central
11:00 AM – 4:30 PM	Presenter Center
1:00 PM – 5:30 PM	Healthcare Simulation 2050: Building a Better Future Together Forum

### Friday, January 10, 2025

7:00 AM – 4:30 PM	Registration
7:00 AM – 4:30 PM	SSH Central
7:00 AM – 4:30 PM	Presenter Center
8:00 AM – 5:00 PM	Exhibitor Move in and set up
8:00 AM – 5:00 PM	CHSE® and CHSOS® courses
8:30 AM – 12:30 PM	Healthcare Simulation 2050: Building a Better Future Together Forum
9:00 AM – 4:30 PM	Immersive Courses <i>(Onsite and Offsite, buses departure time varies based on location)</i>
12:30 PM – 4:30 PM	Accreditation Application Readiness Course
6:00 PM – 11:00 PM	President's Diamond Ball <i>Open to all attendees and their registered guests; reserve your seat through registration. (Black tie optional).</i>

# PROGRAM SCHEDULE

## Saturday, January 11, 2025

7:00 AM	5K Fun Run/Walk
7:00 AM – 10:30 AM	Committees, Section, Special Interest Group and Affinity Group Meetings
7:00 AM – 4:30 PM	Registration
7:00 AM – 4:30 PM	SSH Central
7:00 AM – 4:30 PM	Presenter Center
9:30 AM – 10:30 AM	IMSH Connections Program <i>(sign up in registration)</i>
11:00 AM – 12:15 PM	Opening Plenary Session - The Chad Epps Lecture
12:30 PM – 6:00 PM	Grand Opening of Exhibit Hall
12:30 PM – 2:00 PM	Lunch in the Exhibit Hall
12:30 PM – 6:00 PM	Technology Experiential Area in Exhibit Hall
12:30 PM – 6:00 PM	Research Posters Displayed in Exhibit Hall
1:00 PM – 3:00 PM	What's New in Sim Showcase
2:00 PM – 6:00 PM	Cornhole Tournament <i>(registration required)</i> <i>(All proceeds will benefit the SSH Fund)</i>
2:30 PM – 3:30 PM	Research Poster Professor Rounds in Exhibit Hall
2:30 PM – 4:00 PM	Accreditation Celebration (open to all SSH Accredited Programs)
3:00 PM – 4:30 PM	Networking Activities
4:00 PM – 5:30 PM	What's New in Sim Showcase
4:30 PM – 6:00 PM	“Happy Hour” in the Exhibit Hall



## Sunday, January 12, 2025

7:00 AM – 4:30 PM	Registration
7:00 AM – 4:30 PM	SSH Central
7:00 AM – 4:30 PM	Presenter Center
7:00 AM – 8:00 AM	Committees, Section, Special Interest Group and Affinity Group Meetings
8:15 AM – 9:30 AM	Plenary Session: The Lou Oberndorf Lecture on Innovation and Healthcare Simulation
9:30 AM – 4:30 PM	Exhibit Hall Open
9:30 AM – 4:30 PM	Research Posters Displayed in Exhibit Hall
9:45 AM – 10:45 AM	Educational Sessions
11:00 AM – 12:00 PM	Educational Sessions
12:00 PM – 1:30 PM	What's New in Sim Showcase
12:00 PM – 2:00 PM	SimVentors Showcase in the Exhibit Hall
12:00 PM	President's Lunch, by invitation only
12:00 PM – 2:00 PM	Technology Experiential Area in Exhibit Hall
11:30 PM – 2:00 PM	Lunch in Exhibit Hall
2:00 PM – 3:30 PM	Educational Sessions
2:00 PM – 3:30 PM	Main stage presentation in the Plenary Hall
3:45 PM – 5:15 PM	Educational Sessions

### **SUNDAY EVENING: INDUSTRY NIGHT!**

*Spend time with your favorite  
Exhibitor-hosted events around town!*

## PROGRAM SCHEDULE

### Monday, January 13, 2025

7:00 AM – 4:30 PM	Registration
7:00 AM – 4:30 PM	SSH Central
7:00 AM – 4:30 PM	Presenter Center
7:00 AM – 8:00 AM	Section, Special Interest Group and Affinity Group Meetings
8:15 AM – 9:30 AM	Plenary Session: Michael S. Gordon Center Lecture on Medical Education
9:30 AM – 3:00 PM	Exhibit Hall Open
9:30 AM – 3:00 PM	Research Posters Displayed in Exhibit Hall
9:45 AM – 10:45 AM	Educational Sessions
11:00 AM – 12:00 PM	Educational Sessions
12:00 PM – 1:30 PM	What's New in Sim Showcase
12:00 PM – 2:00 PM	Technology Experiential Area in Exhibit Hall
11:30 PM – 2:00 PM	Lunch in Exhibit Hall
12:00 PM – 2:00 PM	What's New in Sim Showcase in Exhibit Hall
2:00 PM – 3:30 PM	Educational Sessions
2:00 PM – 3:30 PM	Main stage presentation in the Plenary Hall
3:00 PM	Exhibit Hall Closes – Teardown Begins
3:45 PM – 5:15 PM	Educational Sessions
5:30 PM - 7:00 PM	International Reception with Affiliation Signing

### Tuesday, January 14, 2025

7:00 AM – 9:00 AM	Registration
7:00 AM – 9:00 AM	SSH Central
7:00 AM – 11:00 AM	Presenter Center
8:15 AM – 9:30 AM	SSH Presents the Closing Plenary Session
9:45 AM – 10:45 AM	Educational Sessions
11:00 AM – 12:00 PM	Educational Sessions

CONGRATULATIONS TO OUR 2025

# ABSTRACT AWARD WINNERS

## 25TH INTERNATIONAL MEETING ON SIMULATION IN HEALTHCARE

### 1st PLACE

Uncovering Sex Bias Markers in Tactical Combat Casualty  
Care: An Exploratory Mixed Methods Study

Alexis Battista

Uniformed Services University of the Health Sciences

### 2nd PLACE

The High-fidelity Simulation Training Courses Based on the  
“Do No Harm” Principle have been Continuously Conducted  
and have Reduced Serious Complications of Central Venous  
Catheterization (CVC)

Ichiro Kaneko

Teikyo University

### 3rd PLACE

The Engagement Scale for Simulation-Based Education  
(ESSBE): Scale Development, Validation, and Psychometric  
Properties

Darla Morton

Atrium Health

### STUDENT AWARD

Analysis of Mass Casualty Incident IPE Simulation  
Experience in Underrepresented Healthcare Community

Peregraina Arciaga

Charles R. Drew University of Medicine and Science

## PROGRAM SCHEDULE

LOOKING BACK  
REACHING  
FORWARD



# LEARNING LABS

Join us as exhibiting members of the SSH Corporate Roundtable showcase products and services to you, the leaders in the field of healthcare simulation. Not all of these Learning Labs are eligible for IPCE credit.

See the SSH Events App for speakers and roundtable details.

### SATURDAY, JAN 11, 2025

**SIMStation Inc. Presents:**  
**Envisioning the Smart Simulation Center of Tomorrow**

Learning Lab (Hands on 60-minute workshop)

**8:00 AM - 9:00 AM**

**Convention Center Room 414B**

**Education Management Solutions Presents: Shifting the Paradigm to a Competency-based Environment**

Learning Lab (Hands on 60-minute workshop)

**9:00 AM - 10:00 AM**

**Convention Center Room 414B**

**Elevate Healthcare Presents: Driving Optimal Simulation - Customer Centric Product Innovation for Realism, Relevance, and Reliability**

Learning Lab (Hands on 90-minute workshop)

**9:00 AM - 10:30 AM**

**Convention Center Room 221E**

**Lucid Reality Labs Presents:**  
**Bridging the Virtual to Hands-On Training Gap with AI and Mixed Reality Innovations in Healthcare Education**

Learning Lab (Hands on 90-minute workshop)

**9:00 AM - 10:30 AM**

**Convention center Room 414C**

**BioMed Simulation Presents:**  
**Augmented Reality in a Simulated Medical Emergency**

Learning Lab (Hands on 90-minute workshop)

**9:00 AM - 10:30 AM**

**Convention Center Room 414D**

### SUNDAY, JAN 12, 2025

**Limbs & Things Global Presents:**  
**Adding Technology to Task Trainers - A Cost-Effective Way to Enhance Learning**

Learning Lab (Hands on 60-minute workshop)

**9:45 AM - 10:45 AM**

**Convention Center Room 221C**

**Gordon Center for Simulation and Innovation in Medical Education Presents: Innovative Simulations for Training & Evaluation of Cardiopulmonary Assessment Skills**

Learning Lab (Hands on 60-minute workshop)

**9:45 AM - 10:45 AM**

**Convention Center Room 221D**

**Body Interact Presents: Hybrid Pedagogical Approaches with Virtual Patients**

Learning Lab (Hands on 60-minute workshop)

**9:45 AM - 10:45 AM**

**Convention Center Room 221E**

**Inovus Medical Presents: Training the Robotic Surgeon - New Frontiers**

Learning Lab (Hands on 60-minute workshop)

**11:00 AM - 12:00 PM**

**Convention Center Room 221C**

**Lumis Corp. Presents: Incorporating Hands-on XR Into Your Existing Training Workflows With the Lumis InSight Platform and Any Physical Simulation Modality**

Learning Lab (Hands on 60-minute workshop)

**11:00 AM - 12:00 PM**

**Convention Center Room 221D**

**Intelligent Video Solutions Presents: The Power of Video in Healthcare Simulation**

Learning Lab (Hands on 60-minute workshop)

**11:00 AM - 12:00 PM**

**Convention Center Room 221E**

**Medical-X Presents: Management of a Simulation Center - Operational Approach, Challenges and Solutions**

Learning Lab (Hands on 60-minute workshop)

**2:00 PM - 3:00 PM**

**Convention Center Room 221E**

**Laerdal Medical Presents: Cultivating Maternal Competence - Advancing Competency-Based Learning with Interactive Simulation Workshop**

Learning Lab (Hands on 90-minute workshop)

**2:00 PM - 3:30 PM**

**Convention Center Room 221C**

**Surgical Science & Simbionix Simulators Presents: Enhancing Urgent Care Team Training with Virtual Simulators and Continuous Virtual Patients**

Learning Lab (Hands on 90-minute workshop)

**2:00 PM - 3:30 PM**

**Convention Center Room 221D**

**SimX Presents: Teaching with AR, VR, MR, XR**

Learning Lab (Hands on 90-minute workshop)

**3:45 PM - 5:15 PM**

**Convention Center Room 221C**

**Lumeto Presents: Create Your Own AI Guided XR Sim Experience**

Learning Lab (Hands on 90-minute workshop)

**3:45 PM - 5:15 PM**

**Convention Center Room 221D**

**MONDAY JAN 13, 2025**

**Inovus Medical Presents: Awarding CME & CPD in Surgical Simulation – Totum by Inovus Medical**

Learning Lab (Hands on 60-minute workshop)

**9:45 AM - 10:45 AM**

**Convention Center Room 221C**

**Gaumard Presents: Creating Meaningful Learning Events to Enrich Your Praxis Using UNI® 3**

Learning Lab (Hands on 60-minute workshop)

**9:45 AM - 10:45 AM**

**Convention Center Room 221D**

# SIM<sup>X</sup>

## READY TO GET REAL ABOUT SIMULATION?



TRY IT FOR YOURSELF!  
BOOTH#

# 611

[sim<sup>X</sup>vr.com](http://simxvr.com)





# IMSH™

Society for Simulation in Healthcare

JANUARY 10 – 14, 2025 | ORLANDO, FL

FRIDAY

## FRIDAY, JANUARY 10







# FRIDAY JANUARY 10

8:30 AM - 12:30 PM

## SPECIAL EVENT

### Forum: Healthcare Simulation 2050: Building a Better Future Together

Convention Center Room 110A

2:00 PM - 4:00 PM

## MEETING

### Advocacy Committee Meeting (By Invitation Only)

Convention Center Room 314A

11:00 AM - 12:30 PM

## MEETING

### SSH Corporate Roundtable Executive Committee

(By Invitation Only)

Convention Center Room 314B

6:00 PM - 7:00 PM

## SPECIAL EVENT

### SSH President's Diamond Ball Cocktail Hour

Rosen Centre Hotel /  
Grand Ballroom

1:00 PM - 2:30 PM

## MEETING

### SSH Corporate Roundtable Full Committee Meeting

(By Invitation Only)

Convention Center Room 314B

7:00 PM - 11:00 PM

## SPECIAL EVENT

### SSH President's Diamond Ball - Dinner and Dancing

Rosen Centre Hotel /  
Grand Ballroom

WIFI



SSID: SSHIMSH2025  
PW: #IMSH2025

Bob Waters  
Scholarship  
Recipient



**Samuel Robinson**  
Monash University  
Melbourne, Australia

# IMMERSIVE COURSES

PREREGISTRATION REQUIRED

9:00 AM - 4:00 PM

**The Business of Simulation:  
Generating Revenue to Support  
Education**

Offsite: University of South Florida  
Health - Center for Advanced Medical  
Learning & Simulation (CAMLs)

**HELP! I Need Somebody!  
Meaningful Metrics for Growing  
Your Program**

Convention Center Room 224D

**When and How to Use XR for  
Clinical Training**

Convention Center Room 224E

12:30 PM - 4:30 PM

**SSH Academy Presents: Master's  
Class**

Convention Center Room 221C

**SSH Presents: Accreditation  
Application Readiness**

Convention Center Room 221D

**Transforming Patient and Family  
Education Through Simulation**

Convention Center Room 221E

**From the Control Room to the  
Board Room - A Pathway for the  
Simulation Operations Specialist**

Convention Center Room 224A

**3D Printing in Healthcare  
Simulation: From Introduction to  
Printing**

Convention Center Room 224B

**Moving Forward with In-situ to  
Change the Outcome**

Convention Center Room 224C

**Mastering Scenario Design**

Convention Center Room 224F

**Mrs. Peacock in the Library: Playing  
a Curriculum Development Game of  
Clue**

Convention Center Room 224G

**Team Training using Applied  
Improvisation for Simulation  
Educators**

Convention Center Room 224H

**Expanding SP Utility: Enhancing  
Communication Skills and  
Immersive Experiences with SPs**

Offsite: University of Central Florida -  
College of Medicine

**Reaching Forward: Mixed Realities  
for Learning and Research**

Offsite: University of Central Florida -  
College of Nursing



**IMSH**<sup>TM</sup>

Society for Simulation in Healthcare

JANUARY 10 – 14, 2025 | ORLANDO, FL

# SATURDAY, JANUARY 11



SATURDAY



# SATURDAY JANUARY 11

Exhibit Hall Hours 12:30 PM - 6:00 PM

6:30 AM - 8:30 AM

SPECIAL EVENT

**#SimFit25 Fun Run/Walk/Roll**

8:00 AM - 9:00 AM

MEETING

**DEI Committee Meeting**

*(By Invitation Only)*

Convention Center Room 224C

MEETING

**Technology Committee Meeting**

*(By Invitation Only)*

Convention Center Room 224D

8:00 AM - 10:00 AM

MEETING

**SSH Accreditation Reviewer  
Training** *(By Invitation Only)*

Convention Center Room 224B

8:30 AM - 9:30 AM

MEETING

**Affiliates Meeting**

*(By Invitation Only)*

Convention Center Room 221B

MEETING

**Mindfulness Affinity Group  
Meeting**

Convention Center Room 314A

MEETING

**Rehabilitation Affinity Group  
Meeting**

Convention Center Room 314B

MEETING

**Designing Simulations Affinity  
Group Meeting**

Convention Center Room 315A

9:00 AM - 10:30 AM

MEETING

**SHAPES Delegate Meeting**

*(By Invitation Only)*

Convention Center Room 224A

MEETING

**Technology Collaborative  
Meeting** *(By Invitation Only)*

Convention Center Room 224D

MEETING

**Patient Safety Affinity Group  
Meeting**

Convention Center Room 224E

MEETING

**Dental Affinity Group Meeting**

Convention Center Room 224F

MEETING

**Disaster Simulation Affinity  
Group Meeting**

Convention Center Room 224G

# SATURDAY, JANUARY 11

## MEETING

**Simulation Operations and Technology Section Meeting**  
Convention Center Room 224H

9:30 AM - 10:30 AM

## MEETING

**Assessment Affinity Group Meeting**  
Convention Center Room 221A

## MEETING

**Mobile and In Situ Affinity Group Meeting**  
Convention Center Room 221B

## MEETING

**Simulation Grounded CBE Affinity Group Meeting**  
Convention Center Room 221C

## MEETING

**Respiratory Care Affinity Group Meeting**  
Convention Center Room 221D

## SPECIAL EVENT

**IMSH Connections Event**  
Convention Center Room 314A

## MEETING

**Development Committee Meeting (By Invitation Only)**  
Convention Center Room 315B

## MEETING

**CHSOS Advisory Team (By Invitation Only)**  
Convention Center Room 414A

## *Beverlee Anderson Education Scholarship Fund*

Made possible through the

SSH FUND

At IMSH 2008, SSH showed its gratitude and appreciation for its first Executive Director, Beverlee Anderson, who retired on July 1, 2008.

Her vision and promotion of simulation helped the Society achieve significant milestones. She was recognized for her efforts at the January 12, 2008 Board of Directors meeting as well as the membership business meeting in San Diego. It was with great honor that the Board of Directors announced the establishment of the Beverlee Anderson Education Scholarship Fund (BAESF) to continue her mission to provide support to attend IMSH and other SSH-sponsored educational activities.



After Beverlee's untimely death in September 2009, the SSH Board of Directors created a memorial fund to build on the already established Scholarship fund. Members are invited to make an online contribution to this fund by visiting [sshfund.org](http://sshfund.org). The fund application is tied directly to Beverlee's interest and past commitment of providing "scholarships" to those she identified as having a need for support to attend IMSH.

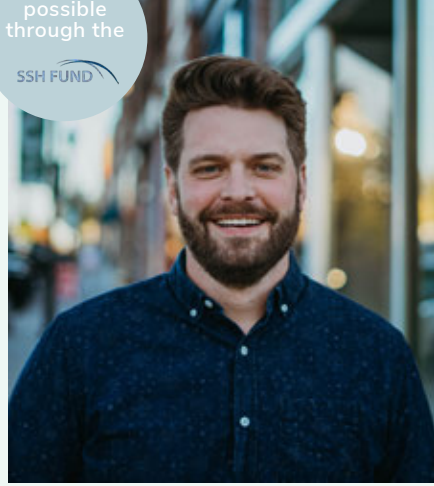
Made possible through the

SSH FUND

## OPENING PLENARY SESSION – THE CHAD EPPS LECTURE

11:00 AM – 12:15 PM

**Kyle Scheele** has been called “the patron saint of crazy ideas”. Whether he’s having a Viking funeral for the regrets of 21,000 people, hosting the world’s first fake marathon, or gaining a million TikTok followers in just 25 hours, Kyle is always on the lookout for crazy ideas that produce wildly outsized outcomes.



Over the last decade, his projects have been featured in outlets like Fast Company, WIRED, The Washington Post, Yahoo!, BuzzFeed, UpWorthy, Goalcast, and more. His videos have been viewed over 250 million times, and he has spoken to hundreds of thousands of audience members across the United States. More than anything, Kyle hopes that his story can inspire others to chase their own crazy ideas and become the people they were meant to be.



HEAR FROM KYLE

# SATURDAY, JANUARY 11

12:15 PM - 6:00 PM

## SPECIAL EVENT

**Grand Opening of Exhibit Hall**  
Convention Center Exhibit Hall

2:00 PM - 6:00 PM

## SPECIAL EVENT

**IMSH 25th Anniversary Cornhole Tournament**  
Convention Center Exhibit Hall  
*All proceeds benefit the SSH Fund.*

2:30 PM - 4:30 PM

## SPECIAL EVENT

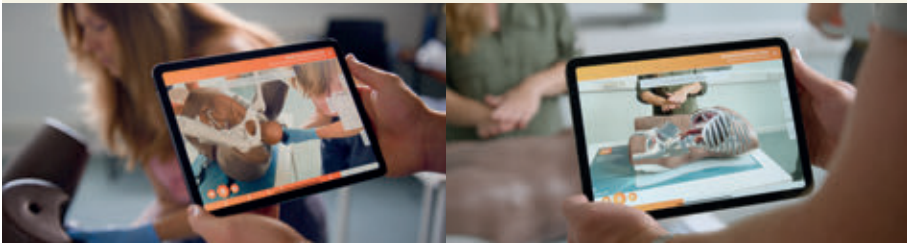
**SSH Accreditation Council Working Collaborative Event**  
*(By Invitation Only)*  
Convention Center Room 414A



**limbs& things**

**DOWNLOAD OUR FREE APP AND GET A \$5 STARBUCKS VOUCHER\***

Discover **Augmented Reality Training (ART)**. Overlay internal anatomy virtually onto our training models via your tablet or smartphone.



Simply download the app and **visit us at booth 817** to get hands on with the latest simulation technology from Limbs & Things and claim your voucher.\*

\* 100 vouchers available on a first come, first served basis

[limbsandthings.com](https://limbsandthings.com)

Download  
our free app



SCAN ME



## PROFESSOR ROUNDS POSTER PRESENTATIONS

**2:30pm – 3:30pm (2.0 IPCE)**  
Convention Center Exhibit Hall

Format for Professor Rounds poster presentations: Short 3-minute presentations followed by 2 minutes of questions & answers. Presenters will remain at their posters ready to give presentations until the end of the time block. Posters will remain on display in the Exhibit Hall until Monday January 13, 2025 at 2:00pm.

- “STEPS” an Innovative Simulation Tool to Enhance Psychological Safety
- Looking forward to a more empathetic world: Use of Poverty Simulation to build empathy in Nueces County
- “Step Up Your Skills: Role Guidelines and Expert Demos to Ace Clinical Simulations”
- Creating an Engaging Learning Environment: The Use of an Unfolding Simulation case to identify implicit bias in opioid use disorder.
- DASH - One Size Does Not Fit All - Localization of the DASH to assess debriefings at an academic simulation center
- Integrating Robots into High-Fidelity Simulations: Impacts on Team Performance
- Integrating Social Justice Concepts in Simulation Using a Lens of Cultural Humility
- Validity Argument for the Cognitive Load Assessment Scales in Simulation (CLAS-Sim) Germane Load Scale
- Enhancing Clinical Confidence and Competence among Graduate Nursing Students using Remote-Access Virtual Simulation
- Student Engagement in Virtual Reality and Manikin-Based Simulation: Results and Recommendations from a Quasi-Experimental Implementation Study
- Validating the Emergency Team Competencies Score for the briefing and debriefing activities of emergency healthcare providers: A Delphi Method Approach
- Evaluation of Knowledge and Self-efficacy among Nurse Practitioner Students in Pediatric Clinical Decision-Making Through “Escape Room” Simulation Experiences
- Draw & Doodle SIM (low-fidelity simulation) versus Prop SIM (medium-fidelity simulation) to prepare for emergencies at electronic dance music festivals
- Survey of Medical Simulation Training for General Medical Officers in the US Military Health System
- The Role of Simulation in Critical Care Preparedness
- AI-Enabled Manikin Simulation: Evaluating Usability, Feasibility, and Cost
- See Something Say Something Serotonin Syndrome Simulation (S6 SIM) to Prepare Medical Teams at Electronic Dance Music Festivals
- Comparison of Clinical-Centered Length of Time to Auscultate Cardiac Murmurs vs. Long Duration of Time for Students after High Quality Simulation Education
- Oral case presentation self-efficacy deteriorates for medical students within 6 months after participation in “Prez Drillz” online simulation session
- A Simulation-based Focus Group for uncontrolled Lung Donation after Circulatory Death (uDCD)
- Preparing Faculty in Simulation: A Faculty Orientation Course
- Train for Safe Drain: A Low Cost, High Fidelity Ultrasound Guided Peritonsillar Abscess SIM Model
- How Implementing Simulation Best Practice Refined Our Simulation Program and Reduced Learner Anxiety
- Visualizing Student Activity in Manikin-Based Simulations: Implications for Debriefing
- Supporting Diverse Simulation Learning Experiences for Undergraduate Nursing Students
- Unveiling the Impact: Equipment Fidelity and Instructional Design in Advanced Cardiovascular Life Support Training at a Brazilian Medical School

## SATURDAY, JANUARY 11

- Unraveling the Narratives of Pain: Educating Standardized Patients on the Three Dimensions of Pain and Somatization Disorder
- The integration of mixed virtual and haptic reality technology for immersive IV training in nursing students.
- Colonoscopy Training on virtual-reality Simulators or Physical Model Simulators: A Randomized Controlled Trial
- Simulation Tool to Enhance Psychological Safety (STEPS)
- Assessment of three modalities of simulation in acute care simulation course for PharmD students
- Use of Virtual Patients for Training and Assessment
- The Interrelated Technology Assessment Tool (ITAT): Measuring Health Profession Students' Virtual Reality User Experience
- Using a Multi-Patient Augmented Reality Simulation to Facilitate Prioritization and Delegation in Undergraduate Nursing Students
- Evaluating InterRegSim - a collaborative network for simulation in Norway
- Screen-Based Patient Simulation: An Exemplar for Developing and Assessing Competency
- Correlation between NASA-TLX and Theta/Alpha Ratios Derived from Consumer EEG Device
- Evaluation of Virtual Patient Simulation Training for Managing Acute Patients with an Emphasis on Meaningful Learning
- Enhancing Telephone Triage Skills in Pre-Licensure Nursing Students with Generative AI Simulation
- Six-month Cricothyrotomy Skill Retention Among Paramedics Using a Low-cost Simulated Airway Model
- Agreement between medical student self-assessment and faculty rating of performance on a simulated suturing task
- Exploring Inclusive Teaching Practices in Simulation
- USE OF THE DEBRIEFING ASSESSMENT FOR SIMULATION IN HEALTHCARE (DASH) TOOL IN A SIMULATION CENTER
- Phase II Pilot: VA Medical Foster Home Simulation CPR Outreach Training
- "My body felt this is real": Fourth Year Medical Student Perspectives of a Simulated Pediatric Inpatient Experience
- Interdisciplinary Development and Implementation of Counseling-Based Simulation Experience to Foster Speech-Language Pathology Graduate Clinician Skills: Lessons Learned and Future Considerations
- Evaluation of a Simulator for the Training of Adverse Event Management
- Innovate2Educate: Creating an Engaging Nursing Skills Lab Experience
- Point of View Simulations to Reinvigorate Empathy Among Caregivers
- Virtual AI Agent Simulation for Nursing and Dentistry Education
- Intelligent Simulation Environment: Extended Reality and Conversational Artificial Intelligence
- Inter-Rater Reliability of the DASH tool
- Using Simulation to Illustrate Pain
- Beyond Numbers: Identifying Patterns in Medical Residents' Responses to Harassment During Simulation-Based Learning
- Bias Reduction in Learner Assessments using AI-Assisted Virtual Simulations
- Learning and Transfer to Practice: Simulation Learning Outperforms Online Modules In Teaching how to manage Inappropriate Patient Behaviors
- Transformative Training; A Pathway Program Enhancing Confidence and Competency for the New to Practice Critical Care and Emergency Department Nurse
- Early Efficacy Testing of a Serious Simulation Game: Student Perceived Value, Achievement, Cost and Self-Regulated Engagement Associated with Level Attainment
- Empowering Advanced Practice Providers: A Dynamic Simulation Journey Through Neurological Emergencies
- Comparing SOAP Presentation Progression Using Telemedicine Curriculum with Simulated Patients and Real Patients during Pre-clerkship

- Getting Everyone to Safety-Bariatric Emergency Evacuation Simulations
- Comparison of the Observer Role vs the Active Participant Role in Simulation Based Education for Counselling Skills in Bowel Preparation Techniques-A randomised study.
- Multimodal Acute Pain Management Education for Fourth Year Medical Students
- The Impact of Distance Simulation on Paediatric resuscitation skill acquisition: a randomized control simulation study
- Prickly Situation: Assessing Procedural Confidence, Competence, And Cost In A Novel High Vs. Low Fidelity Needle Cricothyroidotomy Simulation
- Moving forward with simulation based certification exams - Validation of the revised Israeli society of anesthesiologist's board exam
- Simulation-Based Evaluation of a new Video Laryngoscope Intubation Validation Tool
- DOES THE STRESS ASSOCIATED WITH BREAKING BAD NEWS HAVE AN EFFECT ON PHYSICIAN COMMUNICATION AND THE PATIENT'S SATISFACTION WITH THE ENCOUNTER? – A SIMULATION STUDY
- Ensuring Psychological Safety During Sensitive Simulation Scenarios in Psychiatric Nursing Education
- A Cost Effective Solution to EM Physician Procedural Skill Decay
- The use of part task simulation to access the intubation skills of medical students through deliberate practice
- Does modality make a difference? Comparing in-person and virtual resident performance to identify telehealth skill gaps
- Simulation-based Assessment to ensure that Medical School Graduates can Demonstrate Fundamental Clinical Skills
- Using Simulation and HFMEA to Test Pediatric ECMO Cannulation
- Enough is enough! Fighting harassment in the hospital environment: the development and evaluation of a simulation curriculum for OB-GYN residents
- Predictive Value of PSA and ALP in Determining Bone Metastasis in Prostate Cancer Patients in Korle-Bu Teaching Hospital, Accra, Ghana
- Cardiopulmonary Patient Simulation: Putting Physician Assistant Students' Knowledge and Skills into Practice
- Rural Birthing Hospital Pilot using HoloBaby™ Mixed Reality Simulation for Neonatal Resuscitation Training
- Opening the black box of debriefing: interactional sequences and learning
- An innovative simulation to improve staff attitudes and perceptions on the use of professional interpreters during emergent situations
- Tackling 2 challenges at once: high school pipeline program training in naloxone (Narcan) administration
- Enhancing Nursing Education Through Peer Feedback: A Standardized Patient Approach
- A Comparison of the Bouquet Speculum to a Traditional Two-Blade Speculum in Medical Student Educational Techniques of Female Genitourinary Exams and Procedures
- Exploring Escape Rooms as a Platform to Promote Interprofessional Learning among Healthcare Professionals: A Pilot Study
- Effectiveness of a 1-day Critical Events Simulation Course for Emergency Medical Service Providers
- Improving Junior Doctors' Oral Presentation Skills In A Setting Where English Is Not Always The First Language
- Evaluating the effectiveness of an AI-powered tool on enhancing the quality of feedback in simulated clinical skills training.
- Testing Paths of Travel Using Insitu Simulation & Healthcare Failure Modes Effects Analysis (HFMEA)
- Findings from an International Virtual Healthcare Simulation Training Event.
- Bridging the Knowledge Gap: An Online Sepsis Course for Nurses
- Revolutionizing Healthcare Simulation Management with Artificial Intelligence: A Multi-Site Approach
- Effect of End-of-Life Virtual Simulations on Nursing Students' Knowledge and Attitudes

- Preparing students for addressing social and emotional health needs in children through interprofessional simulation
- The Learners' Response: The Impact of a High-Fidelity Postpartum Hemorrhage Simulation
- Boosting Confidence and Competence: The Transformative Impact of Birthing Simulation on OBGYN Education
- Simulation-Based Gynecological Ultrasound Training, the Turning Point in Shaping Medical Students' Career Paths
- The Relationship Between Psychological Flexibility and Acute Stress During Nursing Simulation
- Evaluating a Critical Care Simulation Program
- Adapting Mastery Learning to the "Wicked" World: A Feasibility Study of Modified Simulation-based Mastery Learning within a Social Learning Environment for Novice Psychomotor Skill Development
- From Theory to Practice: Exploring The Impact of Implementing Arthroscopy Training during Orthopedic Surgery Rotation
- Transforming Surgical Education: The Impact of Laparoscopic Hands-on Training in Surgical Rotations
- Building on the Basics: Pediatric Microskill Rolling Refreshers
- Implementing a Simulation-based Team Training for Code Blue Responders
- Breast Biopsy Training: Exploring the Impact of Low-Cost In-House Simulation Models
- Examining Validity Evidence of the Simulation Emotion Regulation Questionnaire (SimERQ) from Interviews with Medical Residents.
- Critical Event Debriefing: A Simulation Intervention to Increase Confidence, Performance, and Wellness Among Emergency Medicine Residents
- Evaluation of a high-fidelity, immersive in-situ active-shooter simulation event for first responders utilizing the integrated EMS-LEO Rescue Task Force Model
- Improving Emergency Response to the Hidden Ancillary Areas Within Our Hospital
- Improving medical student procedural skills confidence via gamification : a pseudo-escape room skills challenge
- Assessing Interprofessional Socialization Through an Interprofessional (IP) Communication Simulation
- Promoting Post-Simulation Learning: Analyzing Learner Perceptions and Intentions through the Lens of Kolb's Experiential Learning Cycle
- Slit Lamp Champs: How Simulated Training Improves Attending Physician Performance & Comfort
- Cadaveric Model Validation of Hip Joint Distraction Technique during Cryoablation of Acetabular Bone Tumor to Prevent Femoral Head Osteonecrosis
- The Virtual Operating Theatre Odyssey for the Novice
- Facilitator Experiences and Perspectives on Debriefing Methods and Training in Clinical Nursing Simulation in Baccalaureate Nursing Programs
- Qualitative Analysis of Women's Experiences of Postpartum POST-BIRTH Warning Signs Education

**4:30 PM - 6:00 PM**

### SPECIAL EVENT

## Exhibit Hall "Happy Hour"

Convention Center Exhibit Hall



# IMSH™

Society for Simulation in Healthcare

JANUARY 10 – 14, 2025 | ORLANDO, FL

## SUNDAY, JANUARY 12



SUNDAY

### MAIN STAGE PRESENTATION



Screening: "The Pitch"

2-3:30 p.m.

Join us for a screening of the incredible, unique look, from the director of "To Err Is Human", at the American healthcare system's ongoing challenge to embrace the next generation of patient safety.

Q&A to follow.



Society for Simulation in Healthcare™

# SUNDAY JANUARY 12

Exhibit Hall Hours 9:30 AM - 4:00 PM

Complete session details are in the SSH Events App, available for Apple and Android platforms.

**7:00 AM – 8:15 AM**

**MEETING**

**Safety II & Resilience  
Engineering Affinity Group  
Meeting**

Convention Center Room 221B

**MEETING**

**Healthcare Simulation Week  
2024 & 2025 (By Invitation Only)**

Convention Center Room 224B

**MEETING**

**CHSE Advisory Team  
(By Invitation Only)**

Convention Center Room 224C

**MEETING**

**Standards, Core Competencies  
and Best Practices in Healthcare  
Simulation Series Content Team  
(By Invitation Only)**

Convention Center Room 224D

**MEETING**

**Internal Medicine Affinity Group  
Meeting**

Convention Center Room 224E

**MEETING**

**SP SIG Annual Business Meeting**

Convention Center Room 224F

**MEETING**

**Distance Simulation Affinity  
Group Meeting**

Convention Center Room 224G

**MEETING**

**Psychology Safety Affinity Group  
Meeting**

Convention Center Room 224H

**WIFI**

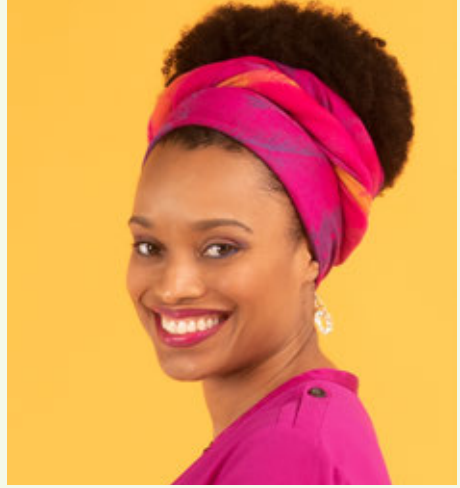


**SSID: SSHIMSH2025**

**PW: #IMSH2025**

## THE LOU OBERNDORF LECTURE ON INNOVATION AND HEALTHCARE SIMULATION

8:15 AM – 9:30 AM



Futurist, author, and Hall of Fame Speaker, **Crystal Washington** equips organizations with the knowledge they need to become “future-proof.” As a technology strategist and certified futurist, Crystal makes complex artificial intelligence, social media, and app technology easy to understand and accessible for everyday people.

Crystal’s clients include Fortune 100 companies, including Google, American Express, and Pfizer. As a sought-after keynote speaker, she has entertained and educated audiences around the globe.

As one of Forbes’ 50 Leading Female Futurists, she appears weekly on season two of the Emmy-nominated show *Life 2.0*. She’s also appeared in numerous publications, including *Entrepreneur* and *Bloomberg Businessweek*, and major television networks regularly call on her as a tech expert.

Crystal is the author of *One Tech Action* and *The Social Media Why*.



HEAR FROM  
CRYSTAL



**9:45 AM – 10:45 AM**

**PANEL PRESENTATION (60 MINUTES)**  
**The Virtual Resus Room As A Global Training Program: A Panel On Our Experiences In India**  
Convention Center Room 101A

**PANEL PRESENTATION (60 MINUTES)**  
**Innovations In Graduate Medical Education Simulation - From Grand Rounds To Mix Reality Simulation**  
Convention Center Room 101B

**PANEL PRESENTATION (60 MINUTES)**  
**Behavioral Emergency Response Team In-Situ Simulation**  
Convention Center Room 102A

**PANEL PRESENTATION (60 MINUTES)**  
**Looking Forward To A Healthy Population: Interweaving An Interprofessional Public Health Simulation Program Throughout The Curriculum**  
Convention Center Room 102B

**PANEL PRESENTATION (60 MINUTES)**  
**Creating A Fair Balanced Simulation: Techniques For Reducing Cognitive Overload**  
Convention Center Room 103A

**PANEL PRESENTATION (60 MINUTES)**  
**Value-Based Simulation In Healthcare: An Updated Outcomes Model**  
Convention Center Room 103B

**HANDS-ON WORKSHOP (60 MINUTES)**  
**Incorporating The “Yes ... And” Technique To Further Innovation In Simulation Centers**  
Convention Center Room 104A

**PANEL PRESENTATION (60 MINUTES)**  
**Healthcare And Beyond: Simulation For Community Engagement, Fundraising, And Youth Education**  
Convention Center Room 104B

**PANEL PRESENTATION (60 MINUTES)**  
**Preparing For The Future: Mock Paging For Upcoming Surgical Residents**  
Convention Center Room 105A

**HANDS-ON WORKSHOP (60 MINUTES)**  
**Data! What You Can’t Measure, You Can’t Manage**  
Convention Center Room 105B

**PANEL PRESENTATION (60 MINUTES)**  
**From Principles to Practice: Longitudinal Spiral Simulation Curriculum Mapping In Undergraduate And Postgraduate Medical Education**  
Convention Center Room 106

**PANEL PRESENTATION (60 MINUTES)**  
**The Use Of Simulation In Medical School To Solidify And Apply Clinical Anatomy**  
Convention Center Room 107

**PANEL PRESENTATION (60 MINUTES)**  
**It’s The People, Not The Palace - Creating, Growing And Developing Your Sim Team**  
Convention Center Room 108A

**PANEL PRESENTATION (60 MINUTES)**  
**Culturally Community Centered Design In Developing The Nation’s First Indigenous Health Simulation Center**  
Convention Center Room 108B

**PANEL PRESENTATION (60 MINUTES)**  
**SSH Presents: Advocacy – Garnering Support for Healthcare Simulation**  
Convention Center Room 110A

**PANEL PRESENTATION (60 MINUTES)**  
**SSH Presents: Global Consensus Statement**  
Convention Center Room 110B

**PANEL PRESENTATION (60 MINUTES)**  
**Fundamentals in Simulation: Sim 101**  
Convention Center Room 221A

**PANEL PRESENTATION (60 MINUTES)**

**SSH Technology Committee Presents: Technology Panel**  
Convention Center Room 221B

**PANEL PRESENTATION (60 MINUTES)**

**Medical Simulation 4.0: Computer Simulation And Digital Twins Applications For Systems Transformation In Healthcare**  
Convention Center Room 224A

**HANDS-ON WORKSHOP (60 MINUTES)**

**Designing OSCEs To Run Across Multiple Campuses**  
Convention Center Room 224B

**HANDS-ON WORKSHOP (60 MINUTES)**

**Simulated Adventures: The Great Nurse Residency Race To Clinical Excellence**  
Convention Center Room 224C

**HANDS-ON WORKSHOP (60 MINUTES)**

**Sim-Spirited: A Step-By-Step Workshop On Creating Your Own Multi-Institutional Simulation Competition**  
Convention Center Room 224D

**PANEL PRESENTATION (60 MINUTES)**

**Objectively Awesome: Advocating For High Quality Simulation**  
Convention Center Room 224E

**HANDS-ON WORKSHOP (60 MINUTES)**

**Workshop On How To De-Role Simulated Participants**  
Convention Center Room 224G

**HANDS-ON WORKSHOP (60 MINUTES)**

**Basic And Advanced Airway Techniques In Simulation**  
Convention Center Room 224H

**HANDS-ON WORKSHOP (60 MINUTES)**

**From Virtual To Reality: An Introduction To Chatgpt Strategies For Medical Simulation**  
Convention Center Room 314A

**HANDS-ON WORKSHOP (60 MINUTES)**

**Having Trouble Making Your Birth Simulations Realistic? Come Hear From Two Midwife Simulationists On Ways To Enhance Fidelity.**  
Convention Center Room 314B

**HANDS-ON WORKSHOP (60 MINUTES)**

**MAP: Managing Aggressive People (In Healthcare)**  
Convention Center Room 315A

**HANDS-ON WORKSHOP (60 MINUTES)**

**Integrating Innovation: The Roadmap To Virtual Simulation In Nursing Education**  
Convention Center Room 315B

**HANDS-ON WORKSHOP (60 MINUTES)**

**Managing Conflicting Agendas: Strategies For Managing Debriefing Roles**  
Convention Center Room 414A

**HANDS-ON WORKSHOP (60 MINUTES)**

**Delivering The Future: Utilization Of Simulation In The Development Of An Obstetric Telemedicine Program**  
Convention Center Room 414B

**HANDS-ON WORKSHOP (60 MINUTES)**

**Closing The Gaps: Integrating The Other Into Debriefing From SPs To SMEs**  
Convention Center Room 414C

**HANDS-ON WORKSHOP (60 MINUTES)**

**Creating A Modular Simulation For A Wide Range Of Disciplines And Learning Levels**  
Convention Center Room 414D

## HOT TOPIC PRESENTATIONS

**FORMAT FOR HOT TOPIC PRESENTATIONS:** Every 15-minute presentations will repeat until the end of the time block. An announcement will be made to rotate to the next station and each presentation will start from the beginning. If the presentation station you hoped to attend was full, please join another station and circle back around.

### Hot Topic Presentations for Administrators & Educators

9:45am – 10:45am (1.0 IPCE)

- Pipeline Future Workforce: Empowering Growth With Scalable Platforms
- Assumptions About The Basic Assumption. A Program Evaluation Project On Nursing Student Perceptions.
- Undergraduate Students In Healthcare Simulation Operations
- Orientation Planning For Simulation Staff
- Managing Serious Games Projects: From Start To Finish
- Optimizing Obstetrics Outcomes: The Role Of Actionable Data In Simulation Training
- Career Paths In Simulation- How To Develop And Retain Simulation Caregivers Throughout Their Career
- Securing Success: Implementing Lockout-Tagout Procedures For Simulation & Training Code Carts
- Simulation Training For Improving Transgender Veteran Care
- Lessons Learned From Recruiting Simulated Patients For A New Program In A Rural Area
- Echoing Excellence- Elements For Effective Virtual Sonography Simulations
- The Beauty Of In-Situ Simulation As A System Check Prior To Opening A New Medical Facility
- Simulationist Onboarding: Building A Foundation With Retention In Mind
- Precision Planning: Logic Models For Simulation Center Success
- Inventory Forecasting, Budgeting, And Planning For A New School Or Program
- Building A Process For Bringing Simulation Technology And Capital Equipment
- D.A.T.A.: Driving Action Through Assessment Analytics Into Your Institution

## CONFERENCE PROCEEDING ORAL PRESENTATIONS

**FORMAT FOR RESEARCH & TECHNOLOGY ORAL PRESENTATIONS:** 10-minute formal presentations followed by a brief question & answer portion. You must stay for all presentations to claim IPCE credit for this session. All presenters will have their manuscript published following IMSH 2025.

### Conference Proceeding Oral Presentations

9:45 AM – 10:45 AM (1.0 IPCE)

Convention Center Room 224F

- **Conference Proceeding Oral Presentation:** Enhancing Critical Care Outcomes through TeleCritical Care Simulation Training
- **Conference Proceeding Oral Presentation:** Challenges and Lessons Learned Implementing VR into a Nursing Curriculum
- **Conference Proceeding Oral Presentation:** The Use of Virtual Reality in Teaching Diagnostic Reasoning to Advanced Practice Registered Nurse Students
- **Conference Proceeding Oral Presentation:** Elevating Healthcare Education through Strategic Simulation Management

# SUNDAY, JANUARY 12

11:00 AM – 12:00 PM

**PANEL PRESENTATION (60 MINUTES)**

**Simulation For Microaggressions Training: A Panel Discussion**  
Convention Center Room 101A

**PANEL PRESENTATION (60 MINUTES)**

**Navigating The Roadmap for Building Sustainable Sim Programs**  
Convention Center Room 101B

**PANEL PRESENTATION (60 MINUTES)**

**Simulation Synergy: Empowering And Inspiring Tomorrow's Healthcare Professionals**  
Convention Center Room 102A

**PANEL PRESENTATION (60 MINUTES)**

**Hologram/Holoportation Technology: Update And Future Direction In Healthcare Education And Training**  
Convention Center Room 102B

**PANEL PRESENTATION (60 MINUTES)**

**Practice Makes Perfect: Medical Emergency Simulation**  
Convention Center Room 103A

**PANEL PRESENTATION (60 MINUTES)**

**Pre-Work For Simulations So Fun That's A Crime**  
Convention Center Room 103B

**PANEL PRESENTATION (60 MINUTES)**

**Reaching Forward As One: The Vision, Strategies, And Lessons Of Combining Nursing And Medical School Sim Centers**  
Convention Center Room 104A

**PANEL PRESENTATION (60 MINUTES)**

**Strategic Storytelling In Philanthropy: Securing \$5.1 Million For A State-Of-The-Art Simulation Center At A Level One Trauma Hospital**  
Convention Center Room 104B

**PANEL PRESENTATION (60 MINUTES)**

**Team OSCE: An Innovative Solution For Assessing Interprofessional Collaboration In A Simulated Emergent Care Setting**  
Convention Center Room 105A

**PANEL PRESENTATION (60 MINUTES)**

**Psychological Safety For The SP: Importance A Culture Of Safety In An SP Program**  
Convention Center Room 105B

**PANEL PRESENTATION (60 MINUTES)**

**Reaching Into the Future: AI In Healthcare Simulation**  
Convention Center Room 106

**HANDS-ON WORKSHOP (60 MINUTES)**

**SSH IRC: Leveraging the SSH Member Roadmap Part 1: Professional Development**  
Convention Center Room 107

**PANEL PRESENTATION (60 MINUTES)**

**High Reliability Organization (HRO) Zero Harm Simulation: The Pressure Is On To Get To Zero Harm**  
Convention Center Room 108A

**PANEL PRESENTATION (60 MINUTES)**

**Who Are The People In Your Neighborhood? Building An Interprofessional Network From Where You Least Expect It**  
Convention Center Room 108B

**PANEL PRESENTATION (60 MINUTES)**

**SSH Presents: Healthcare Simulation Dictionary – Growth, Language, and Worderating!**  
Convention Center Room 110A

**HANDS-ON WORKSHOP (60 MINUTES)**

**SSH Technology Committee Presents: Development and Application of the TIMMI Cognitive Aid**  
Convention Center Room 110B

**PANEL PRESENTATION (60 MINUTES)**

**Providing An Equitable OSCE Experience Across Multiple Clinical Campuses**

Convention Center Room 221A

**PANEL PRESENTATION (60 MINUTES)**

**SSH Presents: Getting Published In STORM: Academic Writing And The Peer Review Process For STORM**

Convention Center Room 221B

**PANEL PRESENTATION (60 MINUTES)**

**Evolving Simulators, Evolving Moulage: Using Moulage To Improve Realism**

Convention Center Room 224A

**HANDS-ON WORKSHOP (60 MINUTES)**

**SSH Presents: Simulation Scholarship Knowledge Map Review**

Convention Center Room 224B

**HANDS-ON WORKSHOP (60 MINUTES)**

**Team-Audience Hybrid Simulation (TAHS) - A Novel Method Of Scaling Simulation**

Convention Center Room 224C

**HANDS-ON WORKSHOP (60 MINUTES)**

**Enhancing Competency Using Electronic Health Record Simulation For High-Risk Scenarios**

Convention Center Room 224D

**HANDS-ON WORKSHOP (60 MINUTES)**

**Beyond The Sim Lab: Using Media To Engage Learners And Faculty**

Convention Center Room 224E

**HANDS-ON WORKSHOP (60 MINUTES)**

**The Research Deficit: Addressing The Gaps In Air Medical Simulation Studies**

Convention Center Room 224G

**PANEL PRESENTATION (60 MINUTES)**

**From The Control Room To The Board Room - A Pathway For The Simulation Operations Specialist Part 1**

Convention Center Room 224H

**HANDS-ON WORKSHOP (60 MINUTES)**

**Strike Out Suicide**

Convention Center Room 314A

**HANDS-ON WORKSHOP (60 MINUTES)**

**Building A Safer Healthcare Environment: How Simulation Training Can Empower Workers To Address Microaggressions And Reduce Workplace Violence**

Convention Center Room 314B

**HANDS-ON WORKSHOP (60 MINUTES)**

**Using A Multi-Patient Lab Simulation To Provide Competency Based Nursing Education**

Convention Center Room 315A

**HANDS-ON WORKSHOP (60 MINUTES)**

**Is It Research Or Scholarship? Navigating Pathways From Project To Publication**

Convention Center Room 315B

**HANDS-ON WORKSHOP (60 MINUTES)**

**Growing Pains: Onboarding New Simulation Education Specialists**

Convention Center Room 414A

**HANDS-ON WORKSHOP (60 MINUTES)**

**CODE BRICK: Leveling-Up Multi-Disciplinary In-Hospital Mass Casualty Incident Education Using Role Playing Game Theory And A Well Known Interlocking System Of Bricks**

Convention Center Room 414B

**HANDS-ON WORKSHOP (60 MINUTES)**

**Leveraging AI To Create Simulation Cases Efficiently**

Convention Center Room 414C

**PANEL PRESENTATION (60 MINUTES)**

**From SP To PETA: A Bootcamp To Develop Physical Exam Teaching Associates**

Convention Center Room 414D

**SUNDAY, JANUARY 12**

## **HOT TOPIC PRESENTATIONS**

**FORMAT FOR HOT TOPIC PRESENTATIONS:** Every 15-minute presentations will repeat until the end of the time block. An announcement will be made to rotate to the next station and each presentation will start from the beginning. If the presentation station you hoped to attend was full, please join another station and circle back around.

### **Hot Topic Presentations for Educators**

**11:00am – 12:00pm (1.0 IPCE)**

Convention Center Room 109A

- Developing A Simulation Curriculum To Prepare Senior Nursing Students For Practice As Registered Nurses
- Innovative Approaches To Mental Health Education: Standardized Patients And Tag Team Simulation
- Stop Banging Your Head: An Investigation Into Simulation Versus Traditional Lecture For Heavy Metal Toxicity Education
- Educational Outcomes Of A Novel Educational Curriculum For Teaching Anesthesiology Residents On How To Evaluate And Manage Life-Threatening Tracheostomy Complications
- Mock Codes Matter
- If You See Something, Say Something: Nurse Aide Simulations
- Workshop: Utilizing CHATGPT In Simulation Design
- Escape Box For Undergraduate Nursing Students
- Suicide Recognition And Intervention: Bridging Dod And VA Dental Teams To Combat Suicide
- Development, Implementation, And Assessment Of Longitudinal Simulation Curriculum In Internal Medicine Residency
- A Novel Simulation For Mass Casualty Incident Triage In Motorsports Medicine
- Approach In The Use Of Pediatric Drowning In EMS Simulation
- Preparing Undergraduate Nursing Students For Medical Surgical Clinical Rotations
- Past Reflections, Future Horizons: Our Xr Summer Internship Journey
- Integration Of Intrinsic And Extrinsic Factors In Simulation Training To Enhancing Medical Students' Speaking-Up Behavior In Medical Error
- System-Based Integrated Comprehensive Simulation Program In Pediatric Residency Education: Our Institutional Experience

## **CONFERENCE PROCEEDING ORAL PRESENTATIONS**

**FORMAT FOR RESEARCH & TECHNOLOGY ORAL PRESENTATIONS:** 10-minute formal presentations followed by a brief question & answer portion. You must stay for all presentations to claim IPCE credit for this session. All presenters will have their manuscript published following IMSH 2025.

### **Conference Proceeding Oral Presentations**

**11:00 AM – 12:00 PM (1.0 IPCE)**

Convention Center Room 224F

- **Conference Proceeding Oral Presentation:** Development of a Novel Cost-effective, Reusable, Emergency Department Resuscitative Hysterotomy Task Trainer
- **Conference Proceeding Oral Presentation:** Evaluating Initial Validity of a New Augmented Reality Simulator for Pediatric Laparoscopic Training
- **Conference Proceeding Oral Presentation:** The Impact of Augmented Reality and Simulation-Based Training in Pediatric Laparoscopic Surgery Training

# SIMVENTOR SHOWCASE DEMONSTRATIONS

**FORMAT FOR SIMVENTOR SHOWCASE DEMONSTRATIONS:** Short 5-minute presentations followed by a brief question & answer portion. Presenters will remain at their table ready to give demonstrations until the end of the time block. Simventor award winners will be announced at 1:45pm

## Simventor Showcase Demonstrations

12:00pm – 2:00pm (2.0 IPCE)

Convention Center Room Exhibit Hall

- **SimVentor Entry #1:** Bleeding Tracheostomy Trainer
- **SimVentor Entry #2:** First Person Point of View Central Line Training for Emergency Medicine Residents Using Augmented Reality
- **SimVentor Entry #3:** Development of a novel lightweight, portable partial task trainer for Extracorporeal Membrane Oxygenation (ECMO) cannulation
- **SimVentor Entry #4:** Rare and Adverse Events Trainer for Laparoscopic Cholecystectomy
- **SimVentor Entry #5:** Application to Automatically Generate High Quality Simulation Scenarios using ChatGPT and Semi-structured Data.
- **SimVentor Entry #6:** A low-cost and durable task trainer for faculty emergency physicians to learn percutaneous thoracostomy
- **SimVentor Entry #7:** Low-cost IJ / Subclavian Central Line trainer
- **SimVentor Entry #8:** 3D Printed Lymph Node Exam Trainer
- **SimVentor Entry #9:** Epinephrine Auto Injector Task Trainer
- **SimVentor Entry #10:** Development of a Novel Cost-effective, Reusable, Emergency Department Resuscitative Hysterotomy Task Trainer
- **SimVentor Entry #11:** Oh Baby: A Cost-Effective Simulated Fetus Abdominal Ultrasound Phantom
- **SimVentor Entry #12:** Mr. Bladder Scan: Upcycling a urinary catheterization trainer
- **SimVentor Entry #14:** StethoCodes - Augmenting Reality in SP Sessions with Low-Cost QR Code Simulated Auscultation
- **SimVentor Entry #15:** "A Cut Above"
- **SimVentor Entry #16:** Fetal Heart Monitor/TOCO Modification
- **SimVentor Entry #17:** Cheap & Easy Ultrasound-guided Thoracentesis Task Trainer
- **SimVentor Entry #18:** Precision Matters: Optimizing Landmarking Techniques for Pediatric Intramuscular Injections with Digital Feedback
- **SimVentor Entry #19:** Bronchoscopy Maze using PVC Pipe: A novel and fun training tool originally used as a puzzle in a medical themed escape room for Emergency Residents
- **SimVentor Entry #20:** Innovation of Arterial Line Trainers: Filling a Gap
- **SimVentor Entry #21:** Ballin' on a Budget: Creating a Cost-Effective Testicular Torsion Model
- **SimVentor Entry #22:** Cervical Dilatation trainers
- **SimVentor Entry #23:** Low-cost Bleeding control Task Trainer
- **SimVentor Entry #24:** Process Development of a 3-D Pediatric Pericardiocentesis Trainer
- **SimVentor Entry #25:** Resuscitative Hysterotomy DIY Trainer
- **SimVentor Entry #26:** LoopLandmark Trainer
- **SimVentor Entry #27:** Free and Open-Source Screen-Based Patient Sim using AI Semantic Analysis
- **SimVentor Entry #28:** Draw & Doodle Simulation: A colourful strategy to prepare medical teams for electronic dance music festival emergencies

## SUNDAY, JANUARY 12

- **SimVentor Entry #29:** Simulated Model and Ultrasound Trainer for Measuring Transrectal Diameter in Pediatrics
- **SimVentor Entry #30:** Ultra Low-Cost Customizable Ultrasound Simulator For Simulation Fidelity
- **SimVentor Entry #31:** Code Blue! How to add sound to code blue pull-station props
- **SimVentor Entry #32:** An innovative approach to creating a uterine task trainer for WHNP
- **SimVentor Entry #33:** Building a cost-effective ECMO cannulation simulation trainer
- **SimVentor Entry #34:** Difficult Airway Task Trainer
- **SimVentor Entry #35:** Experience a Synchronous Immersion using Anatomy and Moulage in Nursing Education
- **SimVentor Entry #36:** Create your own functioning prosthetic amputation
- **SimVentor Entry #37:** Pediatric Lawnmower Injury of the Lower Limb - A Low Resource Moulage Solution
- **SimVentor Entry #38:** Incision and drainage of Bartholin's Cyst task trainer
- **SimVentor Entry #39:** Burn Victim Moulage and Escharotomy Basics
- **SimVentor Entry #40:** Health Care Careers Guide
- **SimVentor Entry #41:** VR Based Advanced Cardiac Life Support Serious Gaming Module with Voice Recognition
- **SimVentor Entry #42:** Escaping to the advanced level! The student nurse practitioner escape room: A competency-based teaching tool for advanced practice nursing education
- **SimVentor Entry #43:** Pediatric Escape Room
- **SimVentor Entry #44:** RoseGPT: An Intelligent Embodied Geriatric Patient in Virtual Reality
- **SimVentor Entry #45:** Pharmacology Agents Medication Matching Review
- **SimVentor Entry #47:** "iNEAT" intranasal-Narcan Education and Training Kiosk Challenge
- **SimVentor Entry #48:** A Gamified Ultrasound-Guided Procedure Task Trainer Utilizing Audio and Visual Feedback
- **SimVentor Entry #49:** Augmented Reality Decision Support System for Cardiopulmonary Arrest
- **SimVentor Entry #50:** A Socio-Ecologica Model - Based Snake, Ladder and Arrows Board - Game for Prostate Cancer Education in Ghana
- **SimVentor Entry #51:** STEAM Stars
- **SimVentor Entry #52:** Health Care Careers 360
- **SimVentor Entry #53:** Sim-Ald: A low-cost, low support needs platform for co-creating realistic and conversational virtual personas
- **SimVentor Entry #54:** Screen-Based Virtual Reality Training on Firearm Injury Prevention
- **SimVentor Entry #55:** DIY Pulmonary Edema Generator
- **SimVentor Entry #56:** Novel Non-Harmful Noxious Stimulus Device for Neurologic Assessment
- **SimVentor Entry #57:** Device and Simulator to Evaluate Harmful Noxious Stimulus During Neurologic Assessment
- **SimVentor Entry #58:** A Novel, Synchronous, First-Person Perspective Approach to Virtual Simulation
- **SimVentor Entry #59:** NUSIM Hand Motion Analyzer: A Real-Time Computer Vision Tool for Assessing Medical Skill Proficiency
- **SimVentor Entry #60:** System to Visualize, Measure, and Track Simulated Wounds in 3D



- **SimVentor Entry #61:** "DermDxTrainer": A High-Fidelity 3-D Cutaneous Pathology Identification Trainer with Representation of Diverse Skin Tones
- **SimVentor Entry #62:** Dive into ECMO - Augmenting team training, vascular access and pump initiation for ECMO management with the development of a low resource task trainer and the utilization of an escape room experience
- **SimVentor Entry #63:** Revisiting the SALAD technique trainer - environmental and sustainable considerations
- **SimVentor Entry #64:** From Concept to Practice: Enhancing Priapism Procedure Training

**12:00 PM – 2:00 PM**

**MEETING**

**IMSH Visioning Working Group**

*(By Invitation Only)*

Convention Center Room 224B

**SIMVENTORS SHOWCASE**

**DEMONSTRATION**

**SimVentors Showcase**

Convention Center Room Exhibit Hall

**12:30 PM – 1:30 PM**

**MEETING**

**Nursing Section Meeting**

Convention Center Room 224C

**MEETING**

**Anesthesia Section Meeting**

Convention Center Room 224D

**MEETING**

**Directors Section Meeting**

Convention Center Room 224E

**MEETING**

**Emergency Medicine Section Meeting**

Convention Center Room 224F

**MEETING**

**Pediatrics Section Meeting**

Convention Center Room 224G

**1:00 PM – 2:00 PM**

**MEETING**

**SSH Education Committee**

*Meeting (By Invitation Only)*

Convention Center Room 224H

**2:00 PM – 3:30 PM**

**HANDS-ON WORKSHOP (90 MINUTES)**

**Ready, Set, Go! An In Situ Simulation Roadmap: Program Design, Implementation, And Sustainability**

Convention Center Room 101A

**HANDS-ON WORKSHOP (90 MINUTES)**

**Basic Sim Hacks**

Convention Center Room 101B

**HANDS-ON WORKSHOP (90 MINUTES)**

**Create Your Own Virtual Reality Sim: An Introduction To VR Development Using Unity**

Convention Center Room 102A

**HANDS-ON WORKSHOP (90 MINUTES)**

**Cracking The Code: How To Create A Sustainable Business Model For Simulation-Based Medical Education Interventions By Using Return On Investment Methodology**

Convention Center Room 102B

**HANDS-ON WORKSHOP (90 MINUTES)**

**Crafting A Compelling Grant Proposal: Essentials For Beginners**

Convention Center Room 103A

**HANDS-ON WORKSHOP (90 MINUTES)**

**The ULTIMATE BLUEPRINT For Designing Strong Simulation Research Study Protocols**

Convention Center Room 103B

**HANDS-ON WORKSHOP (90 MINUTES)**

**Why Write An Article? Non-Academic Writing To Promote Simulation**

Convention Center Room 104A

**HANDS-ON WORKSHOP (90 MINUTES)**

**Beyond The Basics: Next Level Artificial Intelligence Skills For Simulation**

Convention Center Room 104B

**HANDS-ON WORKSHOP (90 MINUTES)**

**SimZones Advanced Topics Roundtable (Workshop)**

Convention Center Room 105A

**HANDS-ON WORKSHOP (90 MINUTES)**

**Paper Airplane Factory Game: An Introduction To Process Improvement, Systems Thinking, And The Learning Organization**

Convention Center Room 105B

**HANDS-ON WORKSHOP (90 MINUTES)**

**Looking In the Mirror - Optimizing Learner Self-Assessment In PEARLS Blended Method Debriefing**

Convention Center Room 106

**HANDS-ON WORKSHOP (90 MINUTES)**

**Culturally Oriented Methods For Preparing Adaptive And Sensitive Scenarios (COMPASS)**

Convention Center Room 107

**HANDS-ON WORKSHOP (90 MINUTES)**

**Simulation In Healthcare Peer Reviewer Workshop: Assessing Quantitative And Qualitative Articles**

Convention Center Room 108A

**HANDS-ON WORKSHOP (90 MINUTES)**

**Sim Hacks! Innovative DIY Model Building And Validation.**

Convention Center Room 108B

**HANDS-ON WORKSHOP (90 MINUTES)**

**SSH Presents: Advocacy-How do I do it?**

Convention Center Room 110A

**HANDS-ON WORKSHOP (90 MINUTES)**

**Simulation Excellence: Driving Quality Improvement Through Effective Planning**

Convention Center Room 110B

**HANDS-ON WORKSHOP (90 MINUTES)**

**Fundamentals in Simulation: Course 2**

Convention Center Room 221A

**HANDS-ON WORKSHOP (90 MINUTES)**

**Hitting The Pause Button: Applying Reflection In Action Debriefing To An Interprofessional Resuscitation Scenario**

Convention Center Room 221B

**HANDS-ON WORKSHOP (90 MINUTES)**

**Moulage From Household Silicone**

Convention Center Room 224A

**HANDS-ON WORKSHOP (90 MINUTES)**

**In Sync, In Practice: Cultivating Team Reflexivity For Trauma Simulation Success**

Convention Center Room 224B

**HANDS-ON WORKSHOP (90 MINUTES)**

**Organizational Excellence Through Simulation: A Principles Based Approach**

Convention Center Room 224C

**HANDS-ON WORKSHOP (90 MINUTES)**

**Making Something From Nothing: Harnessing Generative AI - Using Chatgpt To Improve Fidelity As A Standardized Patient**

Convention Center Room 224D

**HANDS-ON WORKSHOP (90 MINUTES)**

**I Have A Problem! Collaborative Brainstorming & Solutions-Sponsored By SOTS**

Convention Center Room 224E

**HANDS-ON WORKSHOP (90 MINUTES)**

**Through Their Eyes - Using Point Of View Simulation To Transform The Patient Experience**

Convention Center Room 224F

**HANDS-ON WORKSHOP (90 MINUTES)**

**Scaling Excellence: Building A Program To Reach 1000 Training Encounters A Year**

Convention Center Room 224G

**HANDS-ON WORKSHOP (90 MINUTES)**

**From The Control Room To The Board Room - A Pathway For The Simulation Operations Specialist Part 2**

Convention Center Room 224H

**PANEL PRESENTATION (90 MINUTES)**

**AHRQ Resources For Simulation Research And Education In Patient Safety**

Convention Center Room 314A

**HANDS-ON WORKSHOP (90 MINUTES)**

**Mastering Checklist Design For Mastery Learning: Creating Rigorous Assessment Tools For Competency-Based Procedure Training**

Convention Center Room 314B

**HANDS-ON WORKSHOP (90 MINUTES)**

**Leveraging DASH For Debriefing Peer Feedback And For Building A Debriefing Community Of Practice**

Convention Center Room 315A

**HANDS-ON WORKSHOP (90 MINUTES)**

**Enhancing Interprofessional Education With Apps: Exploring Distance Simulation In Healthcare**

Convention Center Room 315B

**HANDS-ON WORKSHOP (90 MINUTES)**

**Game. Set. Match.**

Convention Center Room 414A

**HANDS-ON WORKSHOP (90 MINUTES)**

**Drawing On The Life Stories Of Simulated Participants (SPs) To Co-Create Roles In Simulation Scenarios**

Convention Center Room 414B

**HANDS-ON WORKSHOP (90 MINUTES)**

**Incorporating Health Equity, Diversity, And Inclusion Into Existing Simulation Cases: A Pragmatic Approach**

Convention Center Room 414C

**HANDS-ON WORKSHOP (90 MINUTES)**

**Knowing When To Teach, Coach, Or Debrief: A Roadmap For Implementing "With Good Judgment" Across The SimZones**

Convention Center Room 414D

**SSH FELLOWS MAIN STAGE PRESENTATION**

**The Pitch: Patient Safety's Next Generation (film screening) followed by Q&A with film director**

Convention Center Room 415



## HOT TOPIC PRESENTATIONS

**FORMAT FOR HOT TOPIC PRESENTATIONS:** Every 15-minutes presentations will repeat until the end of the time block. An announcement will be made to rotate to the next station and each presentation will start from the beginning. If the presentation station you hoped to attend was full, please join another station and circle back around.

### Hot Topic Presentations for Educators, Operations Specialist & Researchers

2:00pm – 3:30pm (1.5 IPCE)

Convention Center Room 109A

- SimTeams: A Sim Operations Approach To Mentorship, Professional Development, And Meeting Operational Team Needs
- Medication Fidelity Tips And Tricks: Making It Real Enough For The Pharmacist Learner
- Get More Bang For Your Buck! Applying Instructional Design Principles To Your Simulation Activities
- Leading In Silence: Simulating A Mass Casualty Event With A Deafened Commander
- Development Of An Interactive Inventory Database To Improve Simulation Planning And Development
- "Wait, You Can Do That?": A Sim Ops Not-So-Classified Sim Survival Guide
- Low-Cost DIY Cricothyroidotomy Trainer
- Preemptive Prep: Standardized Checklist To Minimize Simulation Disruptions
- Simulation In Medical Education: Evolution And Promise
- Virtual Reality (VR) Open Lab Program: Logistics & Lessons Learned
- Wellness At Work: Can Time Blocking Be A Viable Solution For Emergency Medicine?
- Minute Moulage - Temporary Tattoo Moulage
- Innovation In Applied Research: Harnessing Collective Expertise
- Simulation: An Anxiety Inducing Safe Place
- Using Generative AI For Creative Problem Solving
- Hybrid Simulation- Dermatology Moulage With 3D Printing
- Oh CLOT, It's Stuck!

**3:45 PM – 5:15 PM**

**HANDS-ON WORKSHOP (90 MINUTES)**  
**Equity In Action: Transforming  
Healthcare Through Simulation  
Workshop**

Convention Center Room 101A

**HANDS-ON WORKSHOP (90 MINUTES)**  
**Basics Of 3D Design and Printing  
For Medical Simulation 2.0**

Convention Center Room 101B

**HANDS-ON WORKSHOP (90 MINUTES)**  
**Readiness Planning Workshop:  
Bridging The Gap Between  
Simulation And Frontline  
Healthcare**

Convention Center Room 102A

**HANDS-ON WORKSHOP (90 MINUTES)**  
**Virtual Vitals: Tomorrow's  
Physicians In The Digital Realm**

Convention Center Room 102B

**HANDS-ON WORKSHOP (90 MINUTES)**  
**Introduction To Simulation  
Research Methods: How To Get  
Started...**

Convention Center Room 103A

**HANDS-ON WORKSHOP (90 MINUTES)**  
**Low Cost Trainers: Get  
Innovative From A Design  
Thinking Perspective**

Convention Center Room 103B

**HANDS-ON WORKSHOP (90 MINUTES)**  
**Excellence Refined: Innovative  
Strategies For Elevating Quality  
And Safety**

Convention Center Room 104A

**PANEL PRESENTATION (90 MINUTES)**  
**SSH Anesthesia Section  
Presents: Reflections and Inno-  
vations in Anesthesia Simulation**

Convention Center Room 104B

**HANDS-ON WORKSHOP (90 MINUTES)**  
**Simulation As A Reintegration  
Tool To Support Hospital-Based  
Healthcare Workers: Facilitating  
Return To Work After Opera-  
tional Stress Injuries**

Convention Center Room 105A

**HANDS-ON WORKSHOP (90 MINUTES)**  
**ChatMD: A Novel Artificial  
Intelligence Chatbot To Simulate  
Code Status Discussions**

Convention Center Room 105B

**HANDS-ON WORKSHOP (90 MINUTES)**  
**The Superhero Within:  
Unmasking Moral Courage  
In Healthcare Professionals  
Through Simulation**

Convention Center Room 106

**HANDS-ON WORKSHOP (90 MINUTES)**  
**Crafting Complex Team  
Simulations: Quality  
Improvement Methodologies To  
Design A Large-Scale In Situ  
Experience**

Convention Center Room 107

**HANDS-ON WORKSHOP (90 MINUTES)**  
**Wilderness Medicine Simulation  
Race: Gamification In Simulation**

Convention Center Room 108A

**HANDS-ON WORKSHOP (90 MINUTES)**  
**Sim Tech/Specialist: Where Are  
You And Where Are You Going?**

Convention Center Room 108B

**HANDS-ON WORKSHOP (90 MINUTES)**  
**Effective Data Management  
In Healthcare Simulation-  
Automate, Integrate, Improve**

Convention Center Room 110A

**HANDS-ON WORKSHOP (90 MINUTES)**  
**How To Create A Center-Level  
Research And Evaluation  
Roadmap In 7 Steps**

Convention Center Room 110B

**HANDS-ON WORKSHOP (90 MINUTES)**  
**Director's Workshop On The  
Development Of A Program's  
Policies And Procedures**

Convention Center Room 221A

**HANDS-ON WORKSHOP (90 MINUTES)**  
**Revolutionizing Relationships:  
Reflecting On Improvisation,  
Envisioning Empathy**

Convention Center Room 221B

## SUNDAY, JANUARY 12

**HANDS-ON WORKSHOP (90 MINUTES)**  
**SP Advocacy: The Key Ingredient  
In Developing DEI Simulations**  
Convention Center Room 224A

**HANDS-ON WORKSHOP (90 MINUTES)**  
**Utilizing Perinatal Health Equity  
Simulations To Teach Behavioral  
Skills To Address Racism, Bias,  
And Social Determinants Of  
Health: Stories From A College  
Of Public Health**  
Convention Center Room 224B

**HANDS-ON WORKSHOP (90 MINUTES)**  
**Procedural Training: Turn  
Stressful To Successful**  
Convention Center Room 224C

**HANDS-ON WORKSHOP (90 MINUTES)**  
**The Art Of Distraction:  
Enhancing Fidelity With  
Simulation Distractors**  
Convention Center Room 224D

**HANDS-ON WORKSHOP (90 MINUTES)**  
**Audiovisual Quest!  
Troubleshooting And Solutions  
For AV Technology In Simulation**  
Convention Center Room 224E

**HANDS-ON WORKSHOP (90 MINUTES)**  
**Creating A Medical Scenario  
Template To Last You The Rest  
Of Your Life Using AI**  
Convention Center Room 224F

**HANDS-ON WORKSHOP (90 MINUTES)**  
**Good Practice In Simulation: A  
Microcredential Story**  
Convention Center Room 224G

**HANDS-ON WORKSHOP (90 MINUTES)**  
**The Rebel Alliance: The Rise  
Of SCARLET (The Grassroots,  
IPE Origin Story That Shaped  
Simulation Collaboration At A  
Large University)**  
Convention Center Room 224H

**HANDS-ON WORKSHOP (90 MINUTES)**  
**Empowering Simulation  
Operations Specialists:  
Leadership, Advocacy, And  
Professional Development**  
Convention Center Room 314A

**HANDS-ON WORKSHOP (90 MINUTES)**  
**Make Your Average Performance  
Excellent: Optimizing Healthcare  
Provider Performance Through  
Mental Skills Training**  
Convention Center Room 314B

**HANDS-ON WORKSHOP (90 MINUTES)**  
**Heuristics And Fallacies:  
Exploring Cognitive Biases And  
Clinical Decision Making In  
Healthcare Simulations**  
Convention Center Room 315A

**HANDS-ON WORKSHOP (90 MINUTES)**  
**Starting With Why:  
Organizational Needs Analysis  
For And With Simulation**  
Convention Center Room 315B

**HANDS-ON WORKSHOP (90 MINUTES)**  
**Speed Mentoring: A Networking  
Event With Leaders In  
Healthcare Simulation**  
Convention Center Room 414A

**HANDS-ON WORKSHOP (90 MINUTES)**  
**Hearing Voices That Are  
Distressing: A Training And  
Simulation Experience**  
Convention Center Room 414B

**HANDS-ON WORKSHOP (90 MINUTES)**  
**Conducting A Comprehensive  
Simulation Needs Assessment  
To Optimize Simulation Design  
And Resource Allocation**  
Convention Center Room 414C

**HANDS-ON WORKSHOP (90 MINUTES)**  
**Psychological Safety First  
Aid: The Art And Science  
Of Repairing Breaches To  
Psychological Safety**  
Convention Center Room 414D

## HOT TOPIC PRESENTATIONS

**FORMAT FOR HOT TOPIC PRESENTATIONS:** Every 15-minute presentations will repeat until the end of the time block. An announcement will be made to rotate to the next station and each presentation will start from the beginning. If the presentation station you hoped to attend was full, please join another station and circle back around.

### Hot Topic Presentations for Educators

3:45pm – 5:15pm (1.5 IPCE)

Convention Center Room 109A

- Leveraging VR For Enhanced Learning: Integrating Virtual Reality Into Critical Care And Emergency Residency Programs
- Reimaging End-Of-Life Curriculum Into An Innovative Simulation Experience
- Using Faculty Development To Increase Simulation Best Practice Standards In A Healthcare System
- Public Health Aspects Of Conducting A Community Based Poverty Simulation
- Addressing Sexually Transmitted Infections As A Public Health Concern Through Simulation
- Development And Implementation Of A Peer Observation Program
- To Code Or Not To Code? A Review Of A Clinical Decision-Making Simulation Activity In Nursing
- Developing A Multi-Patient Simulation Utilizing Healthcare Standards Of Best Practice™ For Simulation Design
- Tissue-Based Procedural Simulation: Becoming Operational
- Simulating In The Next Era: Advancing Nursing Education With Proven Practices And New Technologies
- Hot-Topic: Debriefing Interaction Patterns - Use It To Your Advantage
- Putting It All Together: Longitudinal Hybrid Scenarios For Transition To Residency
- Senior-Level Students As Facilitators For Peer-To-Peer Learning In Simulation Experiences
- Disaster Medicine: Table-Top VS Simulation
- Sequential Microsimulation: A Novel Simulation Format Contrasting Differing Etiologies And Management Of Wide Complex Tachycardia
- Utilizing Gamification To Reinforce Teamwork, Clinical Judgement, And Nursing Psychomotor Skills Competency



HEALTHCARE  
SIMULATION  
WEEK 2025



# JOIN THE CELEBRATION

**September 15-19, 2025**

Healthcare Simulation Week celebrates global professionals like you who use simulation to improve the safety, effectiveness, and efficiency of healthcare delivery. This week also raises awareness in communities nationwide about how healthcare simulation is leading us to safer, more knowledgeable patient care.

**Start planning your celebration today!**

[www.ssih.org/HcSimWeek](http://www.ssih.org/HcSimWeek)

@HcSimWeek

#HcSimWeek25







# IMSH™

Society for Simulation in Healthcare

JANUARY 10 – 14, 2025 | ORLANDO, FL

## MONDAY, JANUARY 13

### MAIN STAGE PRESENTATION

**Virtuous Cycle of AI, Simulation, and QI**

**2-3:30 p.m. | Main stage**

Join us for “Virtuous Cycle of AI, Simulation, and QI”, with Patrick Tighe, MD.

Led by Patrick Tighe, this talk explores AI, simulation, and QI integration in the Learning Health System (LHS), emphasizing their impact on healthcare.

Then, we'll wrap the session with a 30-minute fireside chat with Tighe as he talks with Lou Oberndorf, Parisa Rashidi, PhD, AND Mary Patterson, MD, MEd!



MONDAY



# MONDAY JANUARY 13

Exhibit Hall Hours 9:30 AM - 3:00 PM

Complete session details are in the SSH Events App, available for Apple and Android platforms.

**7:00 AM – 8:15 AM**

MEETING

**Hospital-Based Simulation  
Program Section Meeting**

Convention Center Room 224B

MEETING

**APP SIG Meeting**

Convention Center Room 224C

MEETING

**SP SIG Collaboration Forum**

Convention Center Room 224D

MEETING

**Pharmacy SIG Meeting**

Convention Center Room 224E

MEETING

**Journal Club Affinity Group  
Meeting**

Convention Center Room 224F

MEETING

**New to Simulation Affinity  
Group Meeting**

Convention Center Room 224G

MEETING

**Value-Based Simulation Affinity  
Group Meeting**

Convention Center Room 314A

MEETING

**IPE Affinity Group Meeting**

Convention Center Room 314B

MEETING

**EMS Affinity Group Meeting**

Convention Center Room 315A

**WIFI**



SSID: SSHIMSH2025

PW: #IMSH2025

**MICHAEL S. GORDON CENTER LECTURE ON MEDICAL EDUCATION**

**8:15 AM - 9:30 AM**



**Col. Nicole Malachowski,** USAF (Ret.) defies stereotypes. Yes, she was a jet fighter pilot, but if you think you know her based on that, you'd be wrong.

A leader, a combat veteran, the first woman pilot on the Thunderbirds Air Demonstration Squadron, a White House Fellow, and an inductee into both the National Women's Hall of Fame and the Women in Aviation International Pioneer Hall of Fame, Nicole's distinguished 21-year Air Force career exceeded her wildest dreams.

But the dream came to an end when a devastating tick-borne illness left her struggling greatly to speak or walk for almost nine months. An indomitable spirit, Nicole fought back against overwhelming odds and prevailed. Drawing on stories from her career and personal life, Nicole inspires audiences to rethink the challenges they face every day. She urges them to go beyond resilience and become resurgent.

Nicole empowers people with three key beliefs: failure and risk are the price of entry for achieving something great; sometimes you need to yield to overcome; and her personal mantra: "Nobody wants to lead a scripted life."



**HEAR FROM NICOLE**

**9:45 AM – 10:45 AM**

**PANEL PRESENTATION (60 MINUTES)**

**Get With The Program!  
Developing Simulation-Based  
Orientation Activities For New  
Staff In The Pediatric Emergency  
Department**

Convention Center Room 101A

**PANEL PRESENTATION (60 MINUTES)**

**RCDP Model In ECMO Training**

Convention Center Room 101B

**PANEL PRESENTATION (60 MINUTES)**

**Developing An Assessment  
Plan To Evaluate Student  
Learning Outcomes In A Multi-  
Patient Simulation Within An  
Undergraduate Nursing Program**

Convention Center Room 102A

**PANEL PRESENTATION (60 MINUTES)**

**Incorporation Of Competency  
Based Education Into An Existing  
Oncology Nursing Elective  
Course**

Convention Center Room 102B

**PANEL PRESENTATION (60 MINUTES)**

**XR Learning Hub For Immersive  
Training**

Convention Center Room 103A

**PANEL PRESENTATION (60 MINUTES)**

**Can't Touch This! Material Safety  
In Simulation**

Convention Center Room 103B

**PANEL PRESENTATION (60 MINUTES)**

**Table Top To Bedside Opening  
Of A New Cardiovascular  
Institute: Simulationists As An  
Implementation Consulting  
Service**

Convention Center Room 104A

**HANDS-ON WORKSHOP (60 MINUTES)**

**Resuscitation Field Day! Building  
A Fast-Paced, Engaging  
Resuscitation Skills Training  
Circuit**

Convention Center Room 104B

**HANDS-ON WORKSHOP (60 MINUTES)**

**Debriefing "Experts"  
Necessitates Expert Debriefing:  
Pitfalls And Countermeasures To  
Elevate Continuous Professional  
Development**

Convention Center Room 105B

**PANEL PRESENTATION (60 MINUTES)**

**From Academia To Practice:  
Psychological Safety Across The  
Continuum**

Convention Center Room 106

**PANEL PRESENTATION (60 MINUTES)**

**Lesson's Learned From  
Developing An Integrated  
Simulation Center**

Convention Center Room 107

**PANEL PRESENTATION (60 MINUTES)**

**Debate: In Situ Or In Center**

Convention Center Room 108B

**PANEL PRESENTATION (60 MINUTES)**

**SSH Presents: Accreditation  
Top 10**

Convention Center Room 110A

**PANEL PRESENTATION (60 MINUTES)**

**SSH Presents: Healthcare  
Simulationist Code of Ethics –  
Making it an Aspirational Reality  
in Your Sim Program**

Convention Center Room 110B

**HANDS-ON WORKSHOP (60 MINUTES)**

**Mystery Unleashed: Puzzle  
Design Strategies For  
Educational Escape Rooms**

Convention Center Room 221A

**HANDS-ON WORKSHOP (60 MINUTES)**

**Harnessing The Power Of AI For  
Next-Level Medical Simulations**

Convention Center Room 221B

**HANDS-ON WORKSHOP (60 MINUTES)**

**Yes And, Medical Improv Works!**

Convention Center Room 224A

## MONDAY, JANUARY 13

### HANDS-ON WORKSHOP (60 MINUTES)

**An Opportunity To Practice Debriefing With Good Intention And Cultural Sensitivity With Clips From “The Office”**

Convention Center Room 224B

### PANEL PRESENTATION (60 MINUTES)

**Harnessing The Power Of Simulated Participants To Improve Care For LGBTQIA+ Patients**

Convention Center Room 224C

### PANEL PRESENTATION (60 MINUTES)

**Resuscitating A Debrief Gone Wrong**

Convention Center Room 224D

### HANDS-ON WORKSHOP (60 MINUTES)

**Propel Your Simulation Program Forward: Develop Your Business Insight And Impact Your Organization**

Convention Center Room 224E

### HANDS-ON WORKSHOP (60 MINUTES)

**SOS! How To Hire To Retain And Develop A Comprehensive Simulation Operations Specialist Career Ladder**

Convention Center Room 224F

### HANDS-ON WORKSHOP (60 MINUTES)

**Beyond “Great Job!”: Crafting SP Feedback From General To Specific**

Convention Center Room 224G

### HANDS-ON WORKSHOP (60 MINUTES)

**Unlocking Learning: Designing And Implementing Escape Room Adventures Into Nursing Transition To Practice Programs**

Convention Center Room 224H

### HANDS-ON WORKSHOP (60 MINUTES)

**Lessons Learned And Applications Associated With Building A Virtual Reality ECMO Simulator**

Convention Center Room 314A

### HANDS-ON WORKSHOP (60 MINUTES)

**Building AI Models And Smart Chatbots For Your Students: Creating Customized Resources**

Convention Center Room 314B

### HANDS-ON WORKSHOP (60 MINUTES)

**Building Community Outreach-How Simulation Programs Can Support Healthcare Professions Exploration**

Convention Center Room 315A

### HANDS-ON WORKSHOP (60 MINUTES)

**Vigilance In Action: Bridging The Workplace Violence Gap With Situational Awareness And De-Escalation Simulation**

Convention Center Room 315B

### HANDS-ON WORKSHOP (60 MINUTES)

**Debrief Versus Feedback: Two Sides Of The Same Coin?**

Convention Center Room 414A

### HANDS-ON WORKSHOP (60 MINUTES)

**Achieving Consistent Simulation Outcomes Through Facilitator Training: A Best Practices Approach Using A Standardized And Structured Debriefing Script**

Convention Center Room 414B

### HANDS-ON WORKSHOP (60 MINUTES)

**The 5 Steps To Effective Standardized Participant Feedback**

Convention Center Room 414C

### HANDS-ON WORKSHOP (60 MINUTES)

**Turning Simulations Into Escape Rooms**

Convention Center Room 414D

## HOT TOPIC PRESENTATIONS

**FORMAT FOR HOT TOPIC PRESENTATIONS:** Every 15-minute presentations will repeat until the end of the time block. An announcement will be made to rotate to the next station and each presentation will start from the beginning. If the presentation station you hoped to attend was full, please join another station and circle back around.

### Hot Topic Presentations for Educators, Innovators, & Operations Specialist

9:45am – 10:45am (1.0 IPCE)

Convention Center Room 109A

- Integrating Simulation-Based Learning Into The Pre-Clinical Medical School Curriculum Across Regional Campuses
- Reaching Forward: Strengthening Simulation Through Innovative Faculty Development
- Public Health Nursing Simulations For Pre-Licensure Nursing Students
- No Budget No Problem: Enhancing Your Center With Little (Or No) Money
- Implementing Gamification Into Teaching Sterile Technique
- Enhancing Nursing Education Through Simulation Boot Camps: Benefits, Planning, And Implementation
- Supporting Caregivers In VA Medical Foster Homes With Layperson CPR Simulation Training
- Building A Portfolio Of Pre-Clinical Experiential Learning Opportunities At The University Of Kentucky Physician Assistant Program: SWOT Analysis
- Virtual Simulation Development - Interdisciplinary Approach
- Virtual Vs. Reality: Reducing Bias In VR And In-Person Simulation Assessments
- Incorporating Universal Design In Simulation To Ensure Accessibility And Equity
- Advocating Healthcare Simulation Literacy: It's Now Or Never
- See Something Say Something Serotonin Syndrome Simulation (S6 SIM): A Secret Identity Simulation Experience At An Electronic Dance Music Festival
- "Practice Makes Prepared: Enhancing Emergency Procedures With In-Situ Simulation"
- Psychological Safety For The Standardized Patient: Development Of A Structured SP Support Plan In A Sensitive Case Of Human Sex Trafficking
- Hot Topic: Moulage & Makeup With Simulated Patients

## RESEARCH ORAL PRESENTATIONS

**FORMAT FOR RESEARCH ORAL PRESENTATIONS:** 10-minute formal presentations followed by a brief question & answer portion. You must stay for all presentations to claim IPCE credit for this session. All presenters will have their abstract or manuscript published following IMSH 2025.

### Research Abstract Award Winner Oral Presentations

9:45 AM – 10:45 AM (1.0 IPCE)

Convention Center Room 105A

- IMSH 2025 1st place Abstract: Uncovering sex bias markers in Tactical Combat Casualty Care: An Exploratory Mixed Methods Study
- IMSH 2025 2nd place abstract: The high-fidelity simulation training courses based on the "Do No Harm" principle have been continuously conducted and have reduced serious complications of central venous catheterization (CVC)
- IMSH 2025 3rd place: The Engagement Scale for Simulation-Based Education (ESSBE): Scale development, validation, and psychometric properties
- IMSH 2025 Student winner: Analysis of Mass Casualty Incident IPE Simulation Experience in Underrepresented Healthcare Community

# MONDAY, JANUARY 13

## 11:00 AM –12:00 PM

**PANEL PRESENTATION (60 MINUTES)**  
**Insights And Opportunities:  
Tales Of Survival From Multiple  
Immersive Simulation Boot  
Camp Experiences**  
Convention Center Room 101A

**PANEL PRESENTATION (60 MINUTES)**  
**Travel Further With Your  
Simulation Program – The Case  
For Mobile Simulation Units**  
Convention Center Room 101B

**PANEL PRESENTATION (60 MINUTES)**  
**Use Of Simulation To Assess  
AACN Competencies In  
Undergraduate Nursing Students**  
Convention Center Room 102A

**PANEL PRESENTATION (60 MINUTES)**  
**Keys To Designing  
Interprofessional Trauma Team  
Training For Transfer To Practice**  
Convention Center Room 102B

**PANEL PRESENTATION (60 MINUTES)**  
**Just-In-Time EXIT To Airway**  
Convention Center Room 103A

**PANEL PRESENTATION (60 MINUTES)**  
**The Ball's In Your Court -  
Getting Stakeholder Buy-In For  
Your Simulation Program**  
Convention Center Room 103B

**HANDS-ON WORKSHOP (60 MINUTES)**  
**Creating A Continuing  
Professional Development (CPD)  
Interprofessional Simulation  
Program - A Workshop On  
How To Design And Integrate  
Simulation Sessions That Foster  
True Interprofessional Education**  
Convention Center Room 104A

**HANDS-ON WORKSHOP (60  
MINUTES)**  
**A Practical Guide To Using  
Simulation For Assessment In  
Competency Based Education**  
Convention Center Room 104B

**HANDS-ON WORKSHOP (60  
MINUTES)**  
**Tracking Psychological Distress:  
One Institution's Experience  
Using A Published Simulation  
Psychological Distress Scale**  
Convention Center Room 105B

**HANDS-ON WORKSHOP (60  
MINUTES)**  
**Let's Make A Sim! 8 Easy Steps  
to Create A Learning Objective  
Focused Simulation**  
Convention Center Room 106

**HANDS-ON WORKSHOP (60  
MINUTES)**  
**Debriefing The Debriefers:  
Engaging In Peer Coaching  
Conversations**  
Convention Center Room 107

**PANEL PRESENTATION (60 MINUTES)**  
**Every Minute Counts! Training  
Mobile Stroke Unit Teams For  
Field Treatment**  
Convention Center Room 108A

**PANEL PRESENTATION (60 MINUTES)**  
**Better Together - Making  
Interprofessional Healthcare  
Simulations A Sustainable  
Reality**  
Convention Center Room 108B

**PANEL PRESENTATION (60 MINUTES)**  
**The Tortured QA Department:  
Swiftly Tailoring Your SP  
Program**  
Convention Center Room 110A

**PANEL PRESENTATION (60 MINUTES)**  
**SSH Academy Presents: Are you  
Ready to Apply?**  
Convention Center Room 110B

**HANDS-ON WORKSHOP (60 MINUTES)**  
**Simulation Trivia Game Show:  
Looking Back, Reaching  
Forward!**  
Convention Center Room 221A



**PANEL PRESENTATION (60 MINUTES)**  
**SSH Technology Committee**  
**Presents: Pitch Room** *(By Invitation Only)*  
Convention Center Room 221B

**HANDS-ON WORKSHOP (60 MINUTES)**  
**Increasing Critical Thinking**  
**And Clinical Judgment Skills**  
**Using Scripted Pre-Briefing In**  
**Simulation**  
Convention Center Room 224A

**PANEL PRESENTATION (60 MINUTES)**  
**Sim Specialists: Promoting**  
**Growth And Promotion**  
Convention Center Room 224B

**PANEL PRESENTATION (60 MINUTES)**  
**The Trust Equation: Unlocking**  
**The Power Of Risk Perception In**  
**Distance Simulation Debriefing**  
Convention Center Room 224C

**HANDS-ON WORKSHOP (60 MINUTES)**  
**Improving Rater Reliability**  
**For Clinical Judgment Skills In**  
**Simulation: Using The Lasater**  
**Clinical Judgment Rubric**  
Convention Center Room 224D

**HANDS-ON WORKSHOP (60 MINUTES)**  
**Developing A Staffing/Personnel**  
**Plan For Sim Centers**  
Convention Center Room 224E

**HANDS-ON WORKSHOP (60 MINUTES)**  
**Stroke Drill: Description Of A**  
**Journey Of A Process Improve-**  
**ment For Stroke Patient Care**  
Convention Center Room 224F

**HANDS-ON WORKSHOP (60 MINUTES)**  
**“Oh The Places You’ll Go...”,**  
**Finding Your Place In The World**  
**Of Simulation**  
Convention Center Room 224G

**HANDS-ON WORKSHOP (60 MINUTES)**  
**Incorporating The Tag-Team**  
**Approach: A Simulation**  
**Methodology In The Classroom**  
Convention Center Room 224H

**PANEL PRESENTATION (60 MINUTES)**  
**Advocacy Efforts by SSH,**  
**ASPE, INACSL, & SimGHOSTS:**  
**Alliance for Workforce**  
**Identification in Simulation in**  
**Healthcare (AWISH) - Defining**  
**Simulation Professional Identities**  
**in the Workforce**  
Convention Center Room 314A

**HANDS-ON WORKSHOP (60 MINUTES)**  
**Creative Awareness: Arts**  
**Observation To Enhance**  
**Perception In Simulation**  
Convention Center Room 314B

**HANDS-ON WORKSHOP (60 MINUTES)**  
**From Aviation To Medicine: The**  
**Cross-Domain Application Of**  
**Non-Technical Skills**  
Convention Center Room 315A

**PANEL PRESENTATION (60 MINUTES)**  
**Debate: AI Will Replace The**  
**Simulationist**  
Convention Center Room 315B

**PANEL PRESENTATION (60 MINUTES)**  
**SSH Research Committee**  
**Presents: Unlocking The Potential**  
**Of Standardized Data - Updates**  
**On The International Simulation**  
**Data Registry (ISDR)**  
Convention Center Room 414A

**PANEL PRESENTATION (60 MINUTES)**  
**Innovation In Action: Launching**  
**A 3D Medical Printing Lab**  
Convention Center Room 414B

**PANEL PRESENTATION (60 MINUTES)**  
**Behind The Scenes With Data:**  
**The Unsung Hero Of Healthcare**  
**Simulation**  
Convention Center Room 414C

**PANEL PRESENTATION (60 MINUTES)**  
**Homegrown Simulation Faculty**  
**Development Programs For**  
**Large Hospital Organizations;**  
**Assess, Strategize And Advance**  
Convention Center Room 414D

**SPECIAL EVENT**  
**The Pitch (film screening only)**  
Convention Center Room 415

## HOT TOPIC PRESENTATIONS

**FORMAT FOR HOT TOPIC PRESENTATIONS:** Every 15-minute presentations will repeat until the end of the time block. An announcement will be made to rotate to the next station and each presentation will start from the beginning. If the presentation station you hoped to attend was full, please join another station and circle back around.

### Hot Topic Presentations for Educators, Innovators, & Operations Specialists

11:00am – 12:00pm (1.0 IPCE)

Convention Center Room 109A

- Summer Adventure Series: Attracting High Schoolers To Nursing Through Simulation
- Simulating Interpersonal Conflict: Using Simulation To Improve Resident-To-Resident Feedback
- Leveraging AI To Develop Reverse Case Studies As A Ticket To Enter.
- Roll For Resuscitation: Critical Lessons From Dungeons & Dragons For The Simulationist
- Not Staying Long? Quick Pearls To Operationalize Interprofessional In Situ Simulation In An ED Observation Unit
- To Sim It All Up
- Draw & Doodle Simulation: A Colourful Strategy To Prepare Medical Teams For Electronic Dance Music Festival Emergencies
- Developing And Implementing Culturally Sensitive Simulations In The Virtual Space
- Enhancing Healthcare Simulation With AI: Tailored Learning And Dynamic Scenarios In Clinical Communication
- SimTeam: A Near-Peer Simulation Teaching Program For Medical Students
- Empowering Families: The Role Of Simulation In Pediatric Caregiver Education
- Designating A Simulation Safety Officer For In-Situ Simulation
- Mystery Unleashed: Puzzle Design Strategies For Educational Escape Rooms
- The Simlympics: A Novel Gamified Curriculum
- Up-Scaling Simulation: Design And Integration Into A Large Clinical Meeting
- Residency Simulation Elective A Way Forward: Preparing Futuristic Sim Educators, Researchers, And Leaders

**12:30 PM – 1:30 PM**

MEETING

**Virtual Simulation Section Meeting**

Convention Center Room 224B

MEETING

**OBGYN Section Meeting**

Convention Center Room 224C

**2:00 PM – 3:30 PM**

**HANDS-ON WORKSHOP (90 MINUTES)**

**Saving Time With AI: Best Practices For Using ChatGPT And LLMs To Create Simulation Materials**

Convention Center Room 101B

**HANDS-ON WORKSHOP (90 MINUTES)**

**CHSOS-A Application Overview And Strategies For Success**

Convention Center Room 102A

**HANDS-ON WORKSHOP (90 MINUTES)**

**From Concept To Contract: Bridging The Gap Between Vendors And End Users**

Convention Center Room 102B

**HANDS-ON WORKSHOP (90 MINUTES)**

**Crafting Authentic Learning Experiences: Incorporating Social Determinants Of Health- A 'SMART' Tank Vignette Workshop**

Convention Center Room 103A

**HANDS-ON WORKSHOP (90 MINUTES)**

**Best Practices In Validity: A Primer For Simulation-Based Assessment**

Convention Center Room 103B

**HANDS-ON WORKSHOP (90 MINUTES)**

**"I'd Like To Test That Theory..." A Multi-Institutional Collaboration Simulation Workshop**

Convention Center Room 110A

**HANDS-ON WORKSHOP (90 MINUTES)**

**Who's In Charge Of Who? Make Data Work For You!**

Convention Center Room 110B

**HANDS-ON WORKSHOP (90 MINUTES)**

**Strategic Planning For Your Center's Successful Future**

Convention Center Room 221B

**HANDS-ON WORKSHOP (90 MINUTES)**

**Ready, Set, Consider: A Novel Approach To Using 'No-Go Considerations' In Curriculum Design For Translational Simulations**

Convention Center Room 221C

**HANDS-ON WORKSHOP (90 MINUTES)**

**Standards Of Best Practice INACSL: An Orientation To Integrate The Cornerstones**

Convention Center Room 221D

**HANDS-ON WORKSHOP (90 MINUTES)**

**Take Two, Lights, Camera, Action: Using AI And Mobile Phones For More Than Calls**

Convention Center Room 221E

**HANDS-ON WORKSHOP (90 MINUTES)**

**Faculty Training: Hands-On How To Develop Entrustable Professional Activities (EPAs) In Healthcare Simulation-Based Education**

Convention Center Room 224A

**HANDS-ON WORKSHOP (90 MINUTES)**

**Using Simulation To Teach Difficult Conversation Techniques**

Convention Center Room 224B

**HANDS-ON WORKSHOP (90 MINUTES)**

**Maximizing Engagement In VR Medical Simulation Sessions By Tailoring Scenarios To The Learner**

Convention Center Room 224C

# MONDAY, JANUARY 13

**HANDS-ON WORKSHOP (90 MINUTES)**  
**Fundamentals in Simulation**  
**Series: Operations Specialist**  
Convention Center Room 224C

**HANDS-ON WORKSHOP (90 MINUTES)**  
**Designing Healthcare Simulation**  
**Beyond Traditional Boundaries**  
Convention Center Room 224D

**HANDS-ON WORKSHOP (90 MINUTES)**  
**Empowering Success: Healthcare**  
**Simulations Transforming**  
**Outcomes For The Differently**  
**Abled**  
Convention Center Room 224E

**HANDS-ON WORKSHOP (90 MINUTES)**  
**Effective Debriefing For**  
**Interprofessional Teams:**  
**Challenges And Strategies For**  
**Success**  
Convention Center Room 224F

**HANDS-ON WORKSHOP (90 MINUTES)**  
**Distance Simulation In**  
**Healthcare: Bridging Evidence**  
**And Innovation**  
Convention Center Room 224G

**HANDS-ON WORKSHOP (90 MINUTES)**  
**Right Tool For The Job:**  
**Aligning Simulation Modality**  
**With Achievable Learning**  
**Objectives**  
Convention Center Room 224H

**HANDS-ON WORKSHOP (90 MINUTES)**  
**How To Become An Expert On**  
**Gamification In Simulation**  
Convention Center Room 314A

**HANDS-ON WORKSHOP (90 MINUTES)**  
**Under The Influence: A Novel**  
**Approach To Meeting ACGME**  
**Standards For Substance Use**  
**Education**  
Convention Center Room 314B

**HANDS-ON WORKSHOP (90 MINUTES)**  
**Innovate, Elevate, Simulate:**  
**Towards A Better Bootcamp**  
Convention Center Room 315A

**HANDS-ON WORKSHOP (90 MINUTES)**  
**Integrate Social Determinants Of**  
**Health (SDOH) Into Simulation**  
**Curriculum Using The SDOH**  
**Crosswalk (SDOH-C) Tool**  
Convention Center Room 315B

**HANDS-ON WORKSHOP (90 MINUTES)**  
**SSH Research Committee**  
**Presents: Research Speed**  
**Mentoring Event**  
Convention Center Room 414A

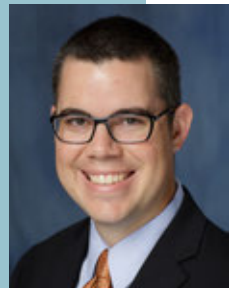
**HANDS-ON WORKSHOP (90 MINUTES)**  
**Emergency And Disaster**  
**Management Training - Our**  
**Experience With The Emergo**  
**Train System**  
Convention Center Room 414B

**HANDS-ON WORKSHOP (90 MINUTES)**  
**Simulate To Collaborate:**  
**Advancing Safety Through A**  
**Collaborative Interprofessional**  
**Faculty Development Course**  
Convention Center Room 414C

**HANDS-ON WORKSHOP (90 MINUTES)**  
**Simulation To Improve Emotional**  
**Safety: Not Just For Kids**  
Convention Center Room 414D

**SSH FELLOWS**  
**MAIN STAGE**  
**PRESENTATION**  
**Virtuous Cycle of**  
**AI, Simulation,**  
**and QI**

Convention Center  
Room 415



*Made possible in  
part by a gift from  
the Oberndorf Family  
Foundation*

## HOT TOPIC PRESENTATIONS

**FORMAT FOR HOT TOPIC PRESENTATIONS:** Every 15-minutes presentations will repeat until the end of the time block. An announcement will be made to rotate to the next station and each presentation will start from the beginning. If the presentation station you hoped to attend was full, please join another station and circle back around.

### Hot Topic Presentations for Educators, Innovators, & Operations Specialist

2:00pm – 3:30pm (1.5 IPCE)

Convention Center Room 109A

- Organizational Expansion Of An Interprofessional Simulation-Based Training Program In Obstetric Emergencies
- The Rural Rumble: A Gamified Simulation For Critical Access Emergency Medicine
- Virtual Reality Empathy Training
- Operations Considerations For Integrated Simulation Curricula: Developing Longitudinal Procedures For Successful Event Management
- Graduate Assistants As An Alternative Human Resource
- Simulation Center Design Tricks: Ideas For Maximizing Space And Flexibility
- The VR Ventilator: Development Of A Novel Training Tool
- Innovative Simulation On A Budget: Maximizing Realism With Creative, Low-Cost Solutions
- Promoting Early Recognition Of Alcohol Withdrawal
- Automating Technical Support Of Simulated Patients
- Virtual Reality Interprofessional Education Program: “Build It And They Will Come”
- Prophylactic Simulation: Simulation To Effect Change Culture
- How To Use Micro Wins To Increase DEI Efforts In A Macro Way
- The Art Of Promotion: Elevating Simulation Programs Through Strategic Marketing
- AI Voice Recognition, Transcription And Synthesis For The Simulationist
- Creating A Home-Made Inventory & Course Setup Tool
- “May I Show You To Your Room?” - The Importance Of Room Orientation In Simulation
- Ascending The Ranks: Implementing Tiered Positions For Simulation Operations Specialists’ Career Advancement

# MONDAY, JANUARY 13

**3:45 PM – 5:15 PM**

**HANDS-ON WORKSHOP (90 MINUTES)**  
**Creating, Maintaining, And Restoring Psychological Safety In Debriefing**  
Convention Center Room 101A

**HANDS-ON WORKSHOP (90 MINUTES)**  
**Name-Claim-Aim: A Team Organizational Strategy For Managing Acute Events**  
Convention Center Room 101B

**HANDS-ON WORKSHOP (90 MINUTES)**  
**SSH Corporate Roundtable Presents: Healthcare Simulation Products: The R&D Process and Assessing the Needs of the Community**  
Convention Center Room 110A

**HANDS-ON WORKSHOP (90 MINUTES)**  
**Measuring Outcomes Of Immersive Virtual Reality: Perspectives From Academia And Practice**  
Convention Center Room 110B

**HANDS-ON WORKSHOP (90 MINUTES)**  
**Navigating Healthcare Simulation Standards To Promote Psychological Safety**  
Convention Center Room 221A

**HANDS-ON WORKSHOP (90 MINUTES)**  
**Mastering The Art Of Talent: Proven Strategies For Recruiting And Retaining Top Simulation Operations Specialists**  
Convention Center Room 221B

**HANDS-ON WORKSHOP (90 MINUTES)**  
**Beyond Task Training: High-Fidelity Scenario Development For Procedural Specialties**  
Convention Center Room 221C

**HANDS-ON WORKSHOP (90 MINUTES)**  
**Essential Education For A Changing World: Creating Curriculum To Introduce Learners To Virtual Reality**  
Convention Center Room 221D

**HANDS-ON WORKSHOP (90 MINUTES)**  
**Scaffolding Interprofessional Learning Through “Mini Mocks”**  
Convention Center Room 221E

**HANDS-ON WORKSHOP (90 MINUTES)**  
**Into The Wild: Building A Successful In Situ Simulation Program**  
Convention Center Room 224A

**HANDS-ON WORKSHOP (90 MINUTES)**  
**Rapid Cycle Deliberate Practice For Maternal Cardiac Arrest Education**  
Convention Center Room 224B

**HANDS-ON WORKSHOP (90 MINUTES)**  
**Pediescape: A Simulation Escape Room Experience...Are You Up For The Challenge?**  
Convention Center Room 224C

**HANDS-ON WORKSHOP (90 MINUTES)**  
**Advanced Curriculum Development For Simulation - Developing A Mastery Learning Curriculum**  
Convention Center Room 224D

**HANDS-ON WORKSHOP (90 MINUTES)**  
**Unlock The Power Of Simulations: Beginner’s Guide To Resilience Engineering And Safety II**  
Convention Center Room 224E

**HANDS-ON WORKSHOP (90 MINUTES)**  
**Lights, Camera, Action! Increasing Simulation Realism By Becoming A Hollywood Director**  
Convention Center Room 224F

**HANDS-ON WORKSHOP (90 MINUTES)**  
**QR Quest: Create Cost-Effective,  
Engaging, And Innovative  
Simulations For Enhanced  
Learning**

Convention Center Room 224G

**HANDS-ON WORKSHOP (90 MINUTES)**  
**The Masters: How To Train  
Your Faculty And Implement A  
Competency Based Curriculum**

Convention Center Room 224H

**HANDS-ON WORKSHOP (90 MINUTES)**  
**Sim Scenario Canvas: A Tool  
For Collaboratively Designing  
Scenarios As A Team**

Convention Center Room 315A

**HANDS-ON WORKSHOP (90  
MINUTES)**  
**A Coach Approach To Feedback:  
ADAPT And R2C2**

Convention Center Room 315B

**HANDS-ON WORKSHOP (90 MINUTES)**  
**SSH Presents: Simulation  
Articles of Influence July 2023 to  
June 2024**

Convention Center Room 414A

**HANDS-ON WORKSHOP (90 MINUTES)**  
**Game On! Designing Effective  
Gamified Learning Experiences  
For Healthcare Professionals**

Convention Center Room 414B

**HANDS-ON WORKSHOP (90 MINUTES)**  
**How Does AI Understand  
Us? Prompt Engineering For  
Healthcare Simulation.**

Convention Center Room 414C

## **HOT TOPIC PRESENTATIONS**

**FORMAT FOR HOT TOPIC PRESENTATIONS:** Every 15-minutes presentations will repeat until the end of the time block. An announcement will be made to rotate to the next station and each presentation will start from the beginning. If the presentation station you hoped to attend was full, please join another station and circle back around.

### **Hot Topic Presentations for Administrators & Educators**

**3:45pm – 5:15pm (1.5 IPCE)**

Convention Center Room 109A

- Low-Cost DIY Bronchoscopy Task Trainer
- Logistics Of Pairing Virtual And In-Person Students In A Primary Care Simulation: Preparing Nursing And Provider Students For Collaborative Practice
- From Theory To Practice: Lessons Learned Developing A Dynamic Pediatric Emergency Medicine Simulation Curriculum For Residents Of Varying Specialties
- AI As A Virtual Patient: A New Approach To Enhancing Clinical Reasoning
- Simtegration: A Novel Pedagogical Approach To Integrate Virtual Patient In Problem-Based Learning (VP-PBL) To Enhance The Clinical Reasoning Skills Of Undergraduate Medical Students.
- Germ X - The Escape Room Experience
- Empowering Trauma Apc Fellows Through Simulation: Overcoming Resident-Centric Challenges
- Medical Student Team Training: A 14 Year Reflection
- Enhancing Interprofessional Communication Skills In Healthcare: The Development And Impact Of The Interprofessional Anschutz Communication Skills Toolbox (I-ACT) And Its Collaborative Faculty
- Starting Off On The Right Foot: Consultation As Part Of The Lifecycle Of A Simulation
- Revolutionizing The Role Of Standardized Patients For Meaningful Impact In Modern Healthcare Simulation
- Development And Rollout Of An Academic In-House Simulated Participant Program
- A Learner-Centric Approach To Improve Resident Code Team Confidence, Knowledge, And Leadership Using Simulation
- Enhancing Faculty Recognition With A Simulation Workload Calculator
- Blueprint For Success: Developing An Effective Task Trainer On A Budget
- Creating A Home-Made Inventory & Course Setup Tool



# RESEARCH ORAL PRESENTATIONS

**FORMAT FOR RESEARCH ORAL PRESENTATIONS:** 10-minute formal presentations followed by a brief question & answer portion. You must stay for all presentations to claim IPCE credit for this session. All presenters will have their abstracts published in the Simulation in Healthcare Journal following IMSH 2025.

## Research Abstract Oral Presentation on Procedural Comp

3:45pm – 5:15pm (1.5 IPCE)

Convention Center Room 102A

- Enhancing Emergency Procedure Education with Haptic Training Simulators
- When Delphi Technique Meets Scale Item Content Validation Process on Training Effectiveness And Simulator Efficacy Of Pulsatile Flushing Technique
- Skill Decay in Military Surgical Technologists: A Gap Analysis
- Preliminary Validation of Mammovest™: Simulator For Initial And Continued Education In Mammography Positioning
- The Usability of Ultrasound Task Trainers

## Research Abstract Oral Presentation on Debriefing & Teaching

3:45pm – 5:15pm (1.5 IPCE)

Convention Center Room 102B

- Near-Peers for Facilitation: Competency in Debriefing
- Assessing Debriefing Skills of Experienced Facilitators using DASH
- Exploring the Pedagogical Value of Faculty Feedback for Simulation Facilitation
- The Impact of Single and Multiple Learner Format on Perceived Level of Comfort in Healthcare Simulation
- Simulation as a Tool in Medical Knowledge Retention
- Instruction and Guidance in Healthcare Simulation: A Scoping Review

## Research Abstract Oral Presentation on Global Health, Resuscitation, & Team Roles

3:45pm – 5:15pm (1.5 IPCE)

Convention Center Room 103A

- Global IMPACT (Improving Emergency Medical Preparedness and Childhood Treatment): Developing a Pediatric Emergency Medicine Simulation Curriculum in Dhulikhel, Nepal
- The National Emergency Department Overcrowding Score as a Predictor of Go/ No- Go Conditions for In-Situ Simulation
- Broselow Tape vs the PediSTAT App: A Simulation Based Comparison of Accuracy and Efficiency of Medication Administration in Pediatric Emergency Resuscitation
- Resuscitation Field Day! Results of a Gamified, Rapid Cycle Educational Session.
- Leadership Skills In The First 5 Minutes Of A High Acuity Event: Which Crisis Resource Management Principles Do Pediatric Residents Use?
- Pediatric Resident Attitudes and Perspectives on the Code Leader Role

## **Research Abstract Oral Presentation on Communication**

3:45pm – 5:15pm (1.5 IPCE)

Convention Center Room 103B

- Toward Direct, Affirmative, And Appropriate Speaking-Up Pattern in Medical Errors. A Simulation Scenario and Personalized Debriefing Approach.
- Simulation-Based De-Escalation Training Is Cost Effective and Decreases Restraint Utilization
- ECCCHO: A Superior Method of Training Patient Handover Communication
- Colonoscopy With Attention, Reliability and Excellence - The CARE Project
- Using In Situ Simulation to Master Breaking the Bad News Of A Child's Hearing Loss
- Exploring Undergraduate Nursing Students' Experiences with Interruptions Using Computer-Based Simulation

## **Research Abstract Oral Presentation on Assessment**

3:45pm – 5:15pm (1.5 IPCE)

Convention Center Room 104A

- Differences In Recognition Versus Verbalization of Sepsis By Pediatric Residents In A Virtual Reality Simulation
- Developing Self-Evaluation Skills in Interprofessional Simulation Educators: A Multilevel Mixed-Methods Study
- Enhancing Metacognition and Nursing Competency In Undergraduate Students Utilizing Multi-User Virtual Environment Simulations: A Multi-Site, Multi-Group Comparative Study
- VR Enhanced Health Assessment/Fundamentals Lab Compared to Traditional Teaching Methodologies
- Use Of a Paired Objective Checklist And Phone Call Simulation To Assess Entrustable Professional Activities
- Virtual Case Simulations as Predictors Of Performance

## **Research Abstract Oral Presentation on Clinical Judgement, Competency, & Curriculum**

3:45pm – 5:15pm (1.5 IPCE)

Convention Center Room 104B

- The Impact of The Advanced Stroke Life Support® Simulation-Enhanced Course On Knowledge, Diagnosis, Management & Care Of Stroke Patients
- Introducing The Simcomp Tool for Enhanced Simulation-Based Learning: Advancing Competency-Based Nursing Simulation
- Improvements In the Clinical Competencies Of Year Two Medical Students Trained With A High-Fidelity Abdominal Simulator
- Long Term Reduction in Treadmill Stress Test Reporting Error By Means Of An Integrated E-Learning And Simulation Module - A Multicentre Study
- Facilitator Satisfaction with Emergency Medicine Simulation Curriculum For Pediatrics (EM Rescu Peds) Implementation

## Research Abstract Oral Presentation on Nursing

3:45pm – 5:15pm (1.5 IPCE)

Convention Center Room 105A

- The Implementation of a Neonatal Multiple Patient Simulation in an Undergraduate Nursing Program
- Simulation Relay Race-Gamifying Nursing Education
- Simulation as a Tool for Nursing Pipeline Education
- Navigating the Virtual Realm: Lessons Learned from a Virtual Reality Mental Health Simulation for Nursing Students
- The Effect of Virtual Simulation with High fidelity Virtual Simulated Persons on Learning Outcomes for Nursing Students
- Effects of the Virtual Simulation Prebriefing-Debriefing Educational Strategy on Nursing Students' Self-Efficacy and Virtual Simulation Performance: A Quasi-Experimental Study

## Research Abstract Oral Presentation on DEI

3:45pm – 5:15pm (1.5 IPCE)

Convention Center Room 105B

- Abdominal Pain and Vaginal Discharge: An Eye-Opening Simulation Case about Human Trafficking
- Development of Reverse Report Simulation: How it Identified Generational Differences in Patient Information Gathering, and its Goal to Improve Bedside Report
- Transgender Simulation Transforming Staff Experiences and Veteran Care
- Stepping into Their Shoes: Developing and Testing an Immersive Virtual Poverty Simulation for Health Professions Students
- Women's Reproductive Health in Virtual Patient Simulations: Design, Equity, and Impact

## Research Abstract Oral Presentation on Scenarios Development & Disaster Response Simulations

3:45pm – 5:15pm (1.5 IPCE)

Convention Center Room 106

- Development of Scenario-Based e-Simulation Platform for Emergency Nursing on Non-Variceal Upper Gastrointestinal Bleeding - NURSEQUEST INTERACTIVE
- Simulation-Based Outreach Program to Maintain Community Hospitals' Team Readiness for Obstetrical Emergencies Across a Rural Health System
- NASA- TLX to Study Team Dynamics For Special Pathogens Preparedness

## Research Abstract Oral Presentation on Emotions in Simulation

3:45pm – 5:15pm (1.5 IPCE)

Convention Center Room 107

- Separating and Measuring Debilitating and Facilitating Anxiety within Nursing Simulation
- Enhancing Psychological Safety in Simulation for Advanced Practice Nursing Students
- Using Virtual Reality to Reduce Stress Among Nurses
- Use of Simulation as a Tool in Diagnosis and Cognitive-Behavioral Therapy of Performance Anxiety: A Novel Intervention in a Nursing School
- Evaluating the Use of High-Fidelity Simulation to Increase New Graduate Nurses' Confidence in Clinical Reasoning and Decision Making
- Comparative Analysis of Novel Multiparametric and PSA Alone Models for Prostate Cancer Risk Estimation in Ghana

## Research Abstract Oral Presentation on IPE & Technology

3:45pm – 5:15pm (1.5 IPCE)

Convention Center Room 108A

- Innovate & Simulate: Elevating In situ Quality Improvement in the NICU and Pediatrics
- The Evolution of Interprofessional Education Simulation: Ten Years of Lessons Learned and Future Direction
- Community Hospital Standardized Procedural Refresher for the Interprofessional NICU Team (SPRINT)
- Pilot Evaluation of an LLM-based Virtual Patient for Immersive Medical Simulation
- Evaluation Of Sepsis Performance Improvement Program with Translational Simulation To Process Of Sepsis Care Achievement.

## Research Abstract Oral Presentation on Technology

3:45pm – 5:15pm (1.5 IPCE)

Convention Center Room 108B

- Is Educator Guided Training in Metaverse Environment Superior to Machine Guided VR-based Advanced Cardiac Life Support Training
- Generative AI and Faculty-Facilitated Scenario-Based Simulation Designs by Medical Students
- Virtual Anatomy: Enhancing Anesthesiology Education Through Interactive Reality
- Title: Integrating Learning Sciences and Mixed Reality Technology to Theorize, Develop, and Evaluate Research-based Mixed Reality Enhanced Simulations in Medical Education
- Virtual Patient-Physician Interactions: Does Camera Angle Matter?
- Applying State-of-the-Art Artificial Intelligence to Simulation-based Education: The Educational and Operational Impact

5:30 PM – 7:00 PM

SPECIAL EVENT  
**International Reception and  
Affiliate Signing Ceremony**  
(By Invitation Only)  
Convention Center Gary Sain  
Cafe

WIFI



SSID: SSHIMSH2025  
PW: #IMSH2025



**SIMULAB**  
ALMOST HUMAN

The background of this section is a close-up photograph of a person in blue scrubs and green gloves performing a surgical simulation on a mannequin. The mannequin's skin is orange and has several red spots representing blood. Surgical instruments are visible in the foreground.

For over 30 years, Simulab has set the standard in soft tissue simulation - delivering unmatched quality, realism, and ease of use.

Partnering with you, the healthcare simulation community, we continue innovating for the future.

Visit our booth to say hello, explore what's new and see how we're REACHING FORWARD.

**Booth 209**

# CONGRATULATIONS, 2025 CLASS OF FELLOWS!

**Krista Anderson**  
DNP, RN, CHSE-A, FSSH  
St. Paul, Minnesota

**Bob Armstrong**  
MS, FSSH  
Norfolk, Virginia

**Kristen M. Brown**  
DNP, CRNP, CPNP-AC, CHSE-A, FAAN, FSSH  
Baltimore, Maryland

**Michelle Brown**  
PhD, MLS (ASCP), CMSBBMC, CHSE, FSSH  
Birmingham, Alabama

**Eliana Escudero Z.**  
N, CNM, MSN, Med, FSSH  
Chile

**Marie Gilbert**  
DNP, RN, CHSE-A, FSSH  
Terre Haute, Indiana

**Jack E. Jaeger**  
MSN Ed, CHSE, FSSH  
Terre Haute, Indiana

**A.J. Kleinheksel**  
PhD, CHSE-A, FSSH  
Augusta, Georgia

**Jason Konzelmann**  
BS, M.Ed., CHSOS, CHSE, FSSH  
Orlando, Florida

**Kati Maxkenzie**  
MSHS, CHSOS-A, CHSE, FSSH  
Brisbane, Australia

**Asit Misra**  
MD, MSMed, CHSE, FSSH  
Miami, Florida

**Heather Anne Noland**  
MEd, CHSOS, CHSE-A, FSSH  
Lynchburg, Virginia



**Ismail Saiboon**  
MBBS, Dr. Orth & Trauma, Emerg. Med (NSR), CHSE, FAMM, FSSH  
Malaysia

**Syretta Spears**  
MHRM, CHSOS-A, CHSE, FSSH  
Lombard, Illinois

**Deb Tauber**  
MSN, RN, CEN, CHSE, FSSH  
Lombard, Illinois

**Carman Turkelson**  
DNP, RN, CCRN, CHSE-A, FSSH  
Flint, Michigan

**Elizabeth Wells-Beede**  
PhD, RN, C-EFM, CHSE-A, CNE, ACUE, FAAN, FSSH  
Fort Worth, Texas

**Timothy Whitaker**  
BS, CHSE, CHSOS, EMT-P, CMTE, FSSH  
Sarasota, Florida

**Phillip Wortham**  
MBA, BA, CHSOS-A, FSSH  
Butte, Montana



**IMSH**<sup>TM</sup>

Society for Simulation in Healthcare

JANUARY 10 – 14, 2025 | ORLANDO, FL

**TUESDAY, JANUARY 14**



**TUESDAY**





# TUESDAY JANUARY 14

Complete session details are in the SSH Events App, available for Apple and Android platforms.

7:00 AM – 8:15 AM

## MEETING

### Section, SIG and Affinity Group Chairs and Vice Chairs Meeting

(By Invitation Only)

Convention Center Room 110A



## SSH PRESENTS THE CLOSING PLENARY SESSION

8:15 AM - 9:30 AM

**Michelle Poler** is a Latina-Jewish entrepreneur, brand strategist, author, and

professional keynote speaker. She is the creator of the project 100 Days Without Fear, and founder of Hello Fears, a movement that has reached over 70 million people worldwide.

Today, her work as an author, digital educator, and social influencer continues to amplify her impact helping audiences turn fears into opportunities, comfort into growth, and ultimately go from being one more to becoming one of a kind. Michelle's best-selling books have been translated into 7 languages, and distributed on 4 continents:

1. Hello, Fears: Crush Your Comfort Zone and Become Who You're Meant to Be
2. The Hello, Fears Challenge: A 100-Day Journal for Self-Discovery.

She has been invited to speak at The Global Leadership Summit, Google, P&G, ESPN, TEDx, Netflix, Microsoft, Meta among many others, and her work has been featured in: The TODAY Show, Forbes, CBS, CNN, BuzzFeed, Mashable, Huffington Post just to name a few.



HEAR FROM  
MICHELLE

PLENARY

## TUESDAY, JANUARY 14

9:45 AM – 10:45 AM

**PANEL PRESENTATION (60 MINUTES)**  
**Building A Robust In Situ Mock Code Program: From Improving Engagement And Gaining Buy-In To Implementation**  
Convention Center Room 101A

**PANEL PRESENTATION (60 MINUTES)**  
**Preparing A Large Scale, In Situ Mass Casualty Simulation: Lessons Learned**  
Convention Center Room 101B

**PANEL PRESENTATION (60 MINUTES)**  
**Are Healthcare Journals DEI-Ready? A Case Report**  
Convention Center Room 102A

**PANEL PRESENTATION (60 MINUTES)**  
**Exploring The Unique Considerations Of Facilitating Virtual Reality Simulations**  
Convention Center Room 102B

**PANEL PRESENTATION (60 MINUTES)**  
**Navigating Fidelity Challenges- -The People, The Senses, The Stuff And The Tech...Oh, My!**  
Convention Center Room 103A

**PANEL PRESENTATION (60 MINUTES)**  
**Value-Based Simulation In Healthcare - Starting With Stakeholders**  
Convention Center Room 103B

**PANEL PRESENTATION (60 MINUTES)**  
**Show Me The Money: Simulation Center Funding Models**  
Convention Center Room 104A

**PANEL PRESENTATION (60 MINUTES)**  
**Today's Simulation Can Save Tomorrow's Patient: Using Simulation To Meet Malignant Hyperthermia Management And Training Standards.**  
Convention Center Room 104B

**PANEL PRESENTATION (60 MINUTES)**  
**Streamlining Success: Mastering Sim Center Data Organization And Collection Systems**  
Convention Center Room 105A

**PANEL PRESENTATION (60 MINUTES)**  
**VR: Beyond The Novelty - Practical Steps to Drive Engagement and Utilization In Your Organization**  
Convention Center Room 106

**PANEL PRESENTATION (60 MINUTES)**  
**Navigating The Intersection: Simulation And Competency-Based Education**  
Convention Center Room 107

**PANEL PRESENTATION (60 MINUTES)**  
**Lessons Learned And The Future Of Mechanical Ventilation Simulation Panel**  
Convention Center Room 108A

**HANDS-ON WORKSHOP (60 MINUTES)**  
**Keep Calm And Debrief: The Art Of Debriefing With Emotional Intelligence**  
Convention Center Room 108B

**PANEL PRESENTATION (60 MINUTES)**  
**SSH Presents: Core Accreditation Standards**  
Convention Center Room 110A

**PANEL PRESENTATION (60 MINUTES)**  
**Utilizing A Popular Cloud-Based Project Management Software As An Ad-Hoc Solution For Simulation Operations Content Management And Data Acquisition**  
Convention Center Room 110B

**HANDS-ON WORKSHOP (60 MINUTES)**  
**Moving The Needle Forward: OSCE Threats And Opportunities Associated With The Cancellation Of USMLE Step 2 Clinical Skills Exam**  
Convention Center Room 221A

**PANEL PRESENTATION (60 MINUTES)**  
**Engaging Simulation Leaders To Address Large Scale Healthcare Challenges**  
Convention Center Room 221B

**PANEL PRESENTATION (60 MINUTES)**  
**Chaos Coordinator - The Role Of Administrative Coordinator Within Healthcare Simulation**  
Convention Center Room 221C

**PANEL PRESENTATION (60 MINUTES)**  
**Exploring Accreditation: A Discussion Among Distinct Programs**  
Convention Center Room 221D

**PANEL PRESENTATION (60 MINUTES)**  
**Safe Container Collaboration: Our Experience Of Navigating Challenges In Interdepartmental And Interdisciplinary Simulation Projects**  
Convention Center Room 221E

**PANEL PRESENTATION (60 MINUTES)**  
**The Business Language Of Simulation Metrics**  
Convention Center Room 224A

**HANDS-ON WORKSHOP (60 MINUTES)**  
**An Effective Way To Use Virtual, Augmented And Mixed Reality**  
Convention Center Room 224B

**HANDS-ON WORKSHOP (60 MINUTES)**  
**'We Are Striving For Creating A Safe Learning Environment'- A Workshop On Psychological Safety In Simulation Based Education**  
Convention Center Room 224C

**HANDS-ON WORKSHOP (60 MINUTES)**  
**Improving SP Performance: The Importance Of Feedback And Evaluations**  
Convention Center Room 224D

**HANDS-ON WORKSHOP (60 MINUTES)**  
**Crafting An In-Situ Simulation Program**  
Convention Center Room 224E

**HANDS-ON WORKSHOP (60 MINUTES)**  
**Creation Of A Comprehensive Onboarding Guide For Operations Specialists New To Healthcare Simulation**  
Convention Center Room 224F

**HANDS ON WORKSHOP (60 MINUTES)**  
**Manikin And Room Modifications To Enhance Simulation Learning Experiences**  
Convention Center Room 224G

**HANDS-ON WORKSHOP (60 MINUTES)**  
**Small Towns, Big Medicine: Simulation For Rural And Critical Access Medicine Training**  
Convention Center Room 314A

**PANEL PRESENTATION (60 MINUTES)**  
**Interprofessional Faculty Development In Simulation Education**  
Convention Center Room 314B

**PANEL PRESENTATION (60 MINUTES)**  
**Psychological Safety Assessment-Simulation (PSA-S): Focus Group Findings & Recommendations For Usage**  
Convention Center Room 315A

**PANEL PRESENTATION (60 MINUTES)**  
**Simulation Center Community Outreach - Strategies For Obtaining Federal Funding**  
Convention Center Room 315B

**PANEL PRESENTATION (60 MINUTES)**  
**Simulating Success: Integrating Skills, Design, And Interdisciplinary Collaboration**  
Convention Center Room 414A

**PANEL PRESENTATION (60 MINUTES)**

**Are Learners Safe? Exploring Variables And Flexing Your Approach To Psychological Safety**

Convention Center Room 414C

**PANEL PRESENTATION (60 MINUTES)**

**Incorporate Cognitive Load Theory And Scaffolding In Clinical Simulation To Promote Knowledge Retention**

Convention Center Room 414D

**PANEL PRESENTATION (60 MINUTES)**

**Empowering Obstetric Care Providers: Simulated Deposition Training**

Convention Center Room 414B

## HOT TOPIC PRESENTATIONS

**FORMAT FOR HOT TOPIC PRESENTATIONS:** Every 15-minutes presentations will repeat until the end of the time block. An announcement will be made to rotate to the next station and each presentation will start from the beginning. If the presentation station you hoped to attend was full, please join another station and circle back around.

### Hot Topic Presentations for Educators

9:45am – 10:45am (1.0 IPCE)

Convention Center 109A

- The Maternal Mortality Reduction Program Obstetrical Simulation Education And Training In A Large Multisystem
- Breaking Barriers: Simulated Strategies For Destigmatizing Substance Abuse In Psychiatry
- A New Objective Method To Simulate And Measure Wounds Reliably And Efficiently
- Simulation Survival: Prepping Learners For Simulation
- Open To Interpretation: Reversing Roles And Building Empathy
- Creation Of A Novel Simulation Based Palliative Care Curriculum For The Emergency Medicine Resident
- Simulating Sensitivity - Including Cultural Competencies In Simulation
- Using Chatgpt To Create 8 Patients For A Complex Simulation
- Development And Evaluation Of A Zombie-Themed Rural Medicine Educational Escape Game For Medical Trainees
- Can We Talk?
- Stress Test In The ER: Simulating Agitated Patients In-Situ
- From Chaos To Clarity: Assessing The Need For Simulations In Social Work Education
- ACLS/PALS Teamwork And Communication Annual Simulation. Once A Year! Are You Serious?
- Needing Second Sight: Expansion Of Existing Simulations To A Second Site
- Deploying Tailored Offline Lims For Medical Education

**11:00 AM – 12:00 PM**

**PANEL PRESENTATION (60 MINUTES)**

**The ART (Airway Response Team) Of Interprofessional Simulation**

Convention Center Room 103A

**HANDS-ON WORKSHOP (60 MINUTES)**

**Lessons Learned In Selecting Modalities For Speech-Language Pathology Graduate Student Simulation**

Convention Center Room 103B

**PANEL PRESENTATION (60 MINUTES)**

**Extended Reality (XR): Creating Guiding Principles To Support A Modality In Simulation.**

Convention Center Room 104A

**PANEL PRESENTATION (60 MINUTES)**

**Been There, Done That: Key Lessons Learned From Simulation-Based Assessment In Undergraduate Nursing Students**

Convention Center Room 104B

**PANEL PRESENTATION (60 MINUTES)**

**Utilizing In-Situ Simulation To Improve Emergency Response In An Academic General Internal Medicine Clinic**

Convention Center Room 105A

**PANEL PRESENTATION (60 MINUTES)**

**On The Road Again: Taking Oncology Simulations Mobile**

Convention Center Room 105B

**PANEL PRESENTATION (60 MINUTES)**

**Innovative Use of Human Factors And Simulation Based Clinical Testing Of Health Information Technology**

Convention Center Room 106

**PANEL PRESENTATION (60 MINUTES)**

**Watch A Doctor Get Sued: A Live Medico-Legal Simulation**

Convention Center Room 107

**PANEL PRESENTATION (60 MINUTES)**

**SSH Presents: History of Healthcare Simulation: Importance, Relevance, and Curation**

Convention Center Room 110A

**PANEL PRESENTATION (60 MINUTES)**

**SSH SP SIG Presents: Tailoring SP Feedback to Your Simulation**

Convention Center Room 110B

**PANEL PRESENTATION (60 MINUTES)**

**Integrating Immersive Virtual Reality-Based Clinical Simulation Training Into Healthcare Training Programs**

Convention Center Room 221A

**PANEL PRESENTATION (60 MINUTES)**

**SSH Nursing Section Presents: Simulation Technology - Unleashing the Power Within Nursing Education**

Convention Center Room 221B

**PANEL PRESENTATION (60 MINUTES)**

**SSH Hospital Based Centers Section Presents: Latent Safety Threat Reporting - Creating a Standard for Hospital-Based Programs**

Convention Center Room 221C

**HANDS-ON WORKSHOP (60 MINUTES)**

**SSH IRC Presents: Leveraging the SSH roadmap Part 2 – Scholarship and Leadership Opportunities for the Experienced Simulationist**

Convention Center Room 221D

**PANEL PRESENTATION (60 MINUTES)**

**Introducing the SSH Simulation Grounded CBE Task Force**

Convention Center Room 221E

**HANDS-ON WORKSHOP (60 MINUTES)**

**Strategies for a Successful CHSE-A Portfolio**

Convention Center Room 224A

## TUESDAY, JANUARY 14

### HANDS-ON WORKSHOP (60 MINUTES)

**When You Don't Have Time, Money, Or Space: Integrating In Situ Sim Against All Odds**  
Convention Center Room 224B

### HANDS-ON WORKSHOP (60 MINUTES)

**Unleashing Your Potential As A Simulationist: Mastering Leadership And Professional Development**  
Convention Center Room 224C

### HANDS-ON WORKSHOP (60 MINUTES)

**Residency Reimagined: VR Integration For Enhanced Nursing Practice**  
Convention Center Room 224D

### HANDS-ON WORKSHOP (60 MINUTES)

**Longevity In SOS Role: Importance Of Onboarding And Tiered Positioning**  
Convention Center Room 224E

### PANEL PRESENTATION (60 MINUTES)

**SSH Emergency Medicine Section Presents: Enhancing Procedural Competency - Pearls and Pitfalls of Simulation-Based Education for Skill Maintenance from Novice Student to Seasoned Faculty**  
Convention Center Room 224F

### PANEL PRESENTATION (60 MINUTES)

**Defining Simulated Participants (SPs) And Inclusion Of SPs In Your Simulation Programs**  
Convention Center Room 224G

### PANEL PRESENTATION (60 MINUTES)

**SSH DEI Committee Presents: Cultivating Inclusive Care: Insights from DEI Simulation Experts in Healthcare**  
Convention Center Room 224H

### HANDS-ON WORKSHOP (60 MINUTES)

**Foundation To Clinical Simulation: Focus On Adult Learning Theory**  
Convention Center Room 314A

### HANDS-ON WORKSHOP (60 MINUTES)

**Revolutionizing OR Nurse Training: The Immersive VR Learning Platform By MSR Israel Center For Medical Simulation And Periopsim**  
Room 314B

### PANEL PRESENTATION (60 MINUTES)

**INACSL Presents: Diverse Perspectives and Unified Solutions to Navigate the HSSOBPTM for Inclusivity**  
Convention Center Room 315A

### PANEL PRESENTATION (60 MINUTES)

**Are You Ready? Senior Simulation Learning for Complex Cardiothoracic Emergency Skills**  
Convention Center Room 315B

### PANEL PRESENTATION (60 MINUTES)

**Bridging The Language Gap: Enhancing Healthcare Access For Limited English Proficiency Patients Through Simulation-Based Learning**  
Convention Center Room 414A

### PANEL PRESENTATION (60 MINUTES)

**APSE Presents: Research Guidance for Collaborating with SP Educators on Human Simulation/SP-based Scholarship with Association of SP Educators leaders**  
Convention Center Room 414B

### PANEL PRESENTATION (60 MINUTES)

**A Framework For Skills-Based Simulation Based Testing With A VR Case Study**  
Convention Center Room 414C

### PANEL PRESENTATION (60 MINUTES)

**Building Bridges To Safer Care: A Patient Safety-Simulation Partnership**  
Convention Center Room 414D

## HOT TOPIC PRESENTATIONS

**FORMAT FOR HOT TOPIC PRESENTATIONS:** Every 15-minutes presentations will repeat until the end of the time block. An announcement will be made to rotate to the next station and each presentation will start from the beginning. If the presentation station you hoped to attend was full, please join another station and circle back around.

### Hot Topic Presentations for Educators, Innovators, & Operations Specialist

11:00am – 12:00pm (1.0 IPCE)

Convention Center Room 109A

- The Use Of Hybrid Course Design In The Provision Of Clinical Simulation Within Occupational Therapy Fieldwork Education
- Enhancing Patient Safety: Reducing Medical Errors Through Distraction And Interruption Simulations
- The Reindiers Games: Simulation With A Dash Of Holiday Cheer
- Implementation Of A Spanish Proficiency Simulation To Impact Culturally Competent Care
- Innovative Solution To Integrating Simulation In Advanced Nursing Curriculum To Build Competencies
- Nurse Educator: Creating And Leading Case-Based OBGYN Clerkship Ultrasound Simulation Curriculum
- It's A Mini Mock After All
- A Virtual Reality Curriculum On Addressing Microaggressions: Navigating Difficult Conversations As A Facilitator Within A Distance-Learning Simulation
- Practice What We Preach: Utilizing Simulation To Reinforce Education For Arterial Access Site Management And Femoral Sheath Removal
- When The Mannequin Must Die: Simulating Pediatric Death
- What Does It Take To Make It Happen? A Pragmatic Approach For Implementation Of High-Stakes Simulation-Based Exams. Lesson Learned From 20 Years Of Experience.
- Small Time To Big Time – Taking A Unit-Based Simulation Program Institution-Wide.
- Inclusive Care Encounters: A Sim For LGBTQ+ Patient Populations
- The Final Pause: Honoring Veterans, Family, And Staff Following A Code Blue Death
- Intrinsic Motivation: Spice Up Pharmacology With Tox Teasers In Your Curriculum
- Creation And Implementation Of A Modified Neonatal Resuscitation Program Module

# What's New in Sim Showcase?

**NEW THIS YEAR!**

The **What's New in Sim Showcase** will highlight 13 companies over 4 different sessions. Each company participating in the What's New in Sim Showcase will introduce and demonstrate a product or technology to the public for the first time! Join us in the Exhibit Hall Theatre to get an exclusive "first-look" at the newest innovations in Simulation in Healthcare!

WNISS SESSION #1 - SATURDAY 1:00 - 3:00		
1:00 - 1:20	Orlando Health Strategic Innovations	Hospital Simulation Institute
1:30 - 1:50	Tactile VR	AI Moderated VR Simulation
2:00 - 2:20	SimVS	SimVS-IV Version 2.0
2:30 - 2:50	SimServeRX by 3AM Technologies	SimServeRx by 3AM Technologies system enhancements
WNISS SESSION #2 - SATURDAY 4:00 - 5:30		
4:00 - 4:20	BVS Trade FZC	Redefining Physical Examination Training with XR-Technology
4:30 - 4:50	Extreme Simulations	PDR25 (preventable death rate 25%) manikin
5:00 - 5:20	IMT Analytics AG	Alveo Lung Simulator Prototype
WNISS SESSION #3 - SUNDAY 12:00 - 1:30		
12:10 - 12:30	iSimulate	Atlas Junior and REALTi 360
12:40 - 1:00	University of Miami Gordon Center for Simulation and Innovation in Medical Simulation	Harvey® Premier
1:10 - 1:30	Biomed Simulation	Revolutionizing Surgical Training: Introducing Interactive Beating Heart Platform
WNISS SESSION #4 - MONDAY 12:00 - 1:30		
12:10 - 12:30	Education Management Solutions	The Total Mobile Simulation Capture and Debrief Solution: Training in Motion®
12:40 - 1:00	Lumis Corp	AR without headsets on any simulator
1:10 - 1:30	Bodyswaps	Developing communication skills & confidence with immersive AI simulations

## Also happening in the Exhibit Hall Theatre!

- **SUNDAY 10:00AM** Expanding Access to Simulation-Based Learning through AI and Cloud-Based Platforms in Clinical Education hosted by AIBODY
- **SUNDAY 9:00AM** Hyper-Realism in Medical Simulation featuring Neill Gorton hosted by Polytek Development Corp.





**IMSH**<sup>TM</sup>

Society for Simulation in Healthcare

JANUARY 10 – 14, 2025 | ORLANDO, FL

## EXHIBIT HALL





Society for Simulation in Healthcare™

# IMSH EXPO

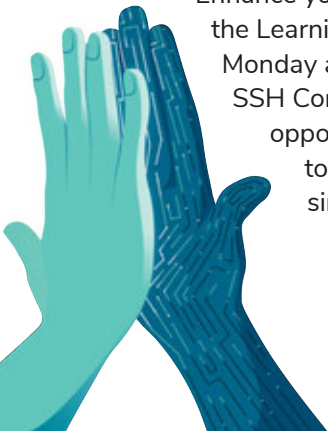
LOOKING BACK  
REACHING  
FORWARD



## Welcome to the world's largest exhibition for healthcare simulation professionals – IMSH 2025 EXPO!

This is your opportunity to explore the latest innovations in healthcare simulation. Many exhibitors offer hands-on demonstrations, so you experience, first-hand, what's new in the industry. More than 140+ exhibitors from around the WORLD are expecting you. And, complimentary lunch is provided in the hall on Saturday, Sunday, and Monday.

Enhance your learning by attending one or more of the Learning Labs. Offered on Saturday through Monday and hosted by exhibiting members of the SSH Corporate Roundtable, this added educational opportunity showcases products and services to you, the leaders in the field of healthcare simulation. Learning Labs are free for attendees.



**SATURDAY**

Experience the opening day as the IMSH EXPO comes alive with energy. Be one of the first inside following the Ribbon Cutting Ceremony at 12:30 PM. Then, stay for the first-ever IMSH Cornhole Tournament and Happy Hour. Help us celebrate 25 years of IMSH with so many companies who have helped us reach this milestone!

**SUNDAY**

Monday's EXPO schedule offers 7 hours of face-to-face time with exhibitors.

**MONDAY**

This is the final day of the EXPO. Make your last rounds and visit with the experts in simulation. Exhibits close at 3:00pm and teardown begins.



**EXPO HOURS**

<b>SAT</b> <b>JAN</b> <b>11</b>	12:30 PM - 6:00 PM	Grand Opening Ribbon cutting at 12:30 PM
	12:30 PM - 2:00 PM	Lunch in Hall
	1:00 PM - 3:00 PM	What's New in Sim Showcase
	2:00 PM - 6:00 PM	IMSH 2025 Cornhole Tournament
	4:00 PM - 5:30 PM 4:30 PM - 6:00 PM	What's New in Sim Showcase Happy Hour in Hall
<b>SUN</b> <b>JAN</b> <b>12</b>	9:30 AM - 4:00 PM	EXPO Open
	11:30 AM - 2:00 PM	Lunch in Hall
	12:00 PM - 1:30 PM	What's New in Sim Showcase
<b>MON</b> <b>JAN</b> <b>13</b>	9:30 AM - 3:00 PM	EXPO Open
	11:30 AM - 2:00 PM	Lunch in Hall
	12:00 PM - 1:30 PM	What's New in Sim Showcase
	3:00 PM	Hall Closes, Teardown begins

# EXHIBITORS

**1300**

## **3-Dmed**

255 Industrial Dr.  
Franklin, OH 45005  
[https://www.3-dmed.com/  
sales@3-Dmed.com](https://www.3-dmed.com/sales@3-Dmed.com)

3-Dmed manufactures and supplies trainers for minimally invasive surgery and along with related practice anatomy, instruments and tasks. We have materials for open surgery too. We are an authorized distributor for Kyoto Kagaku task and ultrasound trainers. We have distributors in many countries around the world.

**1237**

## **3AM Technologies SimServeRx**

5551 Hwy 41A  
Joelton, TN 37080  
<http://www.3amtechnologies.com>  
kevinb@3amtechnologies.com

SimServeRx™ is a user-friendly medication dispensing and bedside administration solution for healthcare education, based on the real-world ServeRx System for hospitals. With features such as SimTime and Patient Reset, educators can adjust scenarios and medication timing, allowing unlimited, repeatable learning sessions to build the necessary skills for safe medication handling.

**416**

## **3B Scientific Group: 3B Scientific, Cardionics, iSimulate, Wallcur, Lifecast, IngMar, Innoging, ECHO Healthcare, VSI**

2189 Flintstone Dr, Suite O  
Tucker, GA 30084  
[https://www.3bscientific.com/  
sales@a3bs.com](https://www.3bscientific.com/sales@a3bs.com)

3B Scientific founded in 1948 Hamburg, Germany and has grown in to the world's leading manufacturer of Medical and Science Educa-

tion solutions. The product portfolio covers a complete range of equipment for simulation and skill training, anatomy, healthcare and patient education, and is continuously updated with new products and innovations.

**1218**

## **AccessVR, LLC**

227 Miller Street  
Winchester, VA 22601  
[https://www.accessvr.com/  
jruscella@accessvr.com](https://www.accessvr.com/jruscella@accessvr.com)

AccessVR is recognized as a thought leader in immersive learning design by the US Government and healthcare industries. We provide the leadership, knowledge and innovations that make it easy for organizations to adopt and scale immersive learning that is both effective and practical.

**133**

## **Accurate srl**

via Alfredo Veroni 37a  
Parma (PR)  
43522  
Italy  
[https://accuratesolutions.it/en/  
info@accuratesolutions.it](https://accuratesolutions.it/en/info@accuratesolutions.it)

Accurate S.r.l. consists of a professional team with unique expertise on international health scenario, capable of integrating scientific research, engineering design and implementation of innovative solutions in health and medical education.

**1221**

## **Adam,Rouilly**

Castle Road  
Eurolink Business Park  
Sittingbourne  
ME10 3AG  
United Kingdom  
<https://www.adam-rouilly.co.uk/>  
[sales@adam-rouilly.co.uk](mailto:sales@adam-rouilly.co.uk)

Since 1918 Adam,Rouilly has supplied the very best in clinical skills simulators, anatomical models and charts to hospitals, medical schools, universities and nursing schools worldwide. We will be showing some exciting new models on our stand at IMSH 2025 and look forward to welcoming you at our stand.

**444**

## **Ademsys Inc.**

1200 Brickell Avenue  
Suite 1950 #1192  
Miami, FL 33131  
<http://www.ademsys.com>  
[edo@ademsys.com](mailto:edo@ademsys.com)

Ademsys develops SimClic, an advanced software platform that streamlines the management of clinical simulation centers for healthcare education. We focus on optimizing resources, scheduling, and enhancing the educational experience, empowering institutions with cutting-edge technology to achieve operational excellence.

**1211**

## **AIBODY**

2-4 Sampson Street  
Wapping  
London  
E1W1NA  
United Kingdom  
<https://aibody.io/>  
[edmund.white@aibody.io](mailto:edmund.white@aibody.io)

AIBODY brings physiology to life with the world's only virtual human organism that lets educators and students teach, study and explore human physiology in an engaging and intuitive manner. The first education platform leveraging generative AI to simplify

course design, ensure scientific accuracy, and offer flexible, realistic, & impactful learning experience.

**244**

## **American Academy of Pediatrics Simulation Program**

345 Park Blvd  
Itasca, IL 60143  
<https://www.aap.org/en/pedialink/simulation-program/>  
[simulation@aap.org](mailto:simulation@aap.org)

In support of the American Academy of Pediatrics mission, the simulation program employs evidence-based experiential and innovative learning methods to improve the safety, effectiveness, quality, and efficiency of clinical care.

**1146**

## **AMFITRACK**

Jens Groens Vej 2  
Vejle  
7100  
Denmark  
<https://www.amfitrack.com/>  
[sales@amfitrack.com](mailto:sales@amfitrack.com)

AMFITRACK™ is an embedded stand-alone, high precision, low-cost electromagnetic tracking system. The AMFITRACK™ system positions an object in 3D, outputting the absolute position (XYZ) and orientation (pitch/yaw/roll) of the system components relative to each other, making it a true (6DOF) electromagnetic tracking system.

**237**

## **Anatomage, Inc.**

3350 Thomas Rd  
Suite 150  
Santa Clara, CA 95054  
<https://anatomage.com/>  
[info@anatomage.com](mailto:info@anatomage.com)

Anatomage is a medical company, driving innovation through advanced solutions in hospitals and educational institutions. Our digital cadaver table, the Anatomage Table, allows a hands-on approach to learning the

human body through unique visualization options, dissection tools, and quiz mode features, making it a strong asset to any anatomy class.

**246**

## Anatomy Warehouse

80047 Monticello Ave  
Skokie, IL 60076  
<https://anatomywarehouse.com/liz@anatomywarehouse.com>

Anatomy Warehouse is the largest supplier of anatomy models and healthcare education models to universities, community colleges, continuing education programs, clinics and more. From task trainers to full-body manikins, we carry top brands in the industry and offer unparalleled, dedicated customer support.

**225**

## Avkin

103 S. James Street  
Wilmington, DE 19804  
<http://www.avkin.com/conferences@avkin.com>

Avkin is transforming healthcare simulation with wearable simulators that deliver realistic patient experiences. Featuring haptic feedback, a variety of skin tones, and lifelike responses, our technology bridges the gap between training and real care. Visit booth 225 to see how Avkin empowers you to elevate your simulation program.

**132**

## Biomed Simulation

9939 Via Pasar  
San Diego, CA 92126  
<https://www.biomedsimulation.com/marketing@biomedsimulation.com>

Biomed Simulation brings life to simulation with our flagship patient simulator, CALIFIA®. Recognized as the most technologically advanced patient simulator, CALIFIA® helps train and test operating room teams and critical care specialists for cardiopulmonary bypass and ECMO. CALIFIA's interactive 3D interface offers a realistic environment for ICU-ECMO simulation.

**941**

## BMK Ventures

1112 Jensen Drive, 101-B  
Virginia Beach, VA 23456  
<https://bmkventures.com/mritchie@bmkventures.com>

We provide the finest medical simulation equipment, components and devices in the industry. BMKV has partnerships with the top manufacturers' in the industry such as Laerdal, 7 SIGMA, and Nasco Healthcare. For medical supply, we have teamed with companies like Skedco, Safeguard Medical, Teleflex, Masimo and many more.

**437**

## Body Interact - Virtual Patients

60 Broad Street, STE3502  
New York, NY 10004  
[https://bodyinteract.com/TTW\\_finance@takethewind.com](https://bodyinteract.com/TTW_finance@takethewind.com)

Body Interact is a state-of-the-art virtual patient simulator that enhances clinical reasoning, decision-making, and critical thinking across healthcare education. It benefits learners from preclinical to postgraduate levels, across 60+ specialties and clinical environments, offering engaging and meaningful learning and assessment experiences for medical, nursing, and other healthcare-based curricula.

**747**

## Bodyswaps

555 Fayetteville Street, Suite 300  
Raleigh, NC 27601  
<https://bodyswaps.co/info@bodyswaps.co>

Bodyswaps is a pioneering brand in AI-enhanced immersive learning, specialising in soft skills training. We empower students and educators through realistic VR simulations and AI-powered feedback, creating impactful and accessible learning experiences. Our mission is to transform soft skills training, making soft skills development engaging and effective.

**1308**

## BreakAway Games

11311 McCormick Rd., Suite 400  
Hunt Valley, MD 21203  
<http://www.breakawaygames.com>  
[wcheek@breakawayltd.com](mailto:wcheek@breakawayltd.com)

BreakAway's vHealthCare Virtual Case-Based Simulations (VCBSP) offer cutting-edge solutions designed to enhance the training and assessment of healthcare professionals. By leveraging our advanced simulation technology portfolio, we can provide realistic, interactive, and immersive learning experiences that are accessible anytime, anywhere.

**1037**

## BT Inc.

A-313, Samsung Techno-valley, 140, Tongil-ro,  
Deogyang-gu  
Goyang-si Gyeonggi-do  
10594  
Korea, South  
<http://www.btinc.co.kr>  
[bt@btinc.co.kr](mailto:bt@btinc.co.kr)

BT Inc. was established to develop highly realistic simulators that closely mimic the human body, designed for diverse practice and evaluation purposes. We have been planning, developing, and manufacturing a wide range of medical training simulators and models to date.

**127**

## BVS Trade FZC

Executive Office - B1 - 550 (f)  
Ajman Free Zone  
Ajman  
8010  
United Arab Emirates  
<https://bemedskilled.com/>  
[coo@bvstrade.ae](mailto:coo@bvstrade.ae)

Our brand, BeMedSkilled, redefines medical education by providing cutting-edge simulators: - XR-Body is a hybrid abdominal palpation simulator. It offers a complete immersion in abdominal physical examination, with a life-like

manikin featuring XR technology. - DENT. PRO – the unique hybrid dental simulator that combines tooth preparation, objective assessment and 3D visualisation.

**145**

## California Baptist University College of Nursing

8308 Magnolia Ave

Riverside, CA 92504  
<https://calbaptist.edu/academics/schools-colleges/nursing/>  
[spearce@calbaptist.edu](mailto:spearce@calbaptist.edu)

Prepare to lead the future of healthcare education with CBU's Masters in Healthcare Simulation Leadership. Gain expertise in managing simulation centers, designing immersive learning experiences, and driving innovation. Visit our booth to learn how you can advance your career and transform patient outcomes through cutting-edge simulation leadership.

**1313**

## Case Western Reserve University

10900 Euclid Ave  
Cleveland, OH 44106  
<https://case.edu/holoanatomy/>  
[chad.kopkas@alensiaxr.com](mailto:chad.kopkas@alensiaxr.com)

HoloAnatomy represents the future of medical education, with immersive extended-reality technology that transforms learning outcomes. By illuminating the human body virtually, academic institutions can reduce the expensive, time-consuming task of obtaining and maintaining cadavers.

**1038**

## Cedars-Sinai Health System

8700 Beverly Blvd  
Los Angeles, CA 90048  
<https://www.cedars-sinai.edu/education/simulation.html>  
[russell.metcalfe@csmc.edu](mailto:russell.metcalfe@csmc.edu)

Academic Medical Center



**443**

## Center for Medical Simulation (CMS)

100 1st Ave, Suite 400  
Boston, MA 2129  
<https://harvardmedsim.org/>  
[info@harvardmedsim.org](mailto:info@harvardmedsim.org)

The Center for Medical Simulation (CMS) offers innovative courses and consulting services utilizing simulation for clinicians, educators, administrators, and managers that help improve learning, performance, teamwork, communication and collaboration skills and assist in making measurable improvements in safety, quality and education in their institutions and healthcare in general.

**1042**

## ChartFlow

2302 Avenue U  
#290348  
Brooklyn, NY 11229  
<https://www.chartflow.io>  
[hello@chartflow.io](mailto:hello@chartflow.io)

ChartFlow is an EHR designed for all healthcare programs and simulation centers. The platform enables students to document in real-time, track patient progress, review orders, and practice medication administration with barcode scanning. Educators have access to both pre-built & customizable scenarios—ranging from simple acute conditions to complex multi-visit case studies.

**844**

## Decent Simulators

Unit 13D, Rathenraw Industrial Estate  
Antrim  
BT41 2SJ United Kingdom  
<http://www.decentsimulators.com>  
[contact@decentsimulators.com](mailto:contact@decentsimulators.com)

We design and create educational models that are simple, affordable, and focused on specific learning objectives. Our task trainers are developed with medical professionals, rigorously tested, and continuously improved. Our products are realistic, adjustable,

and easy to repair, making them ideal for effective medical training.

**945**

## DiaMedical

31440 Northwestern Highway  
Suite 150  
Farmington Hills, MI 48334  
<https://www.diamedicalusa.com/>  
[info@diamedicalusa.com](mailto:info@diamedicalusa.com)

DiaMedical is a manufacturer and distributor of medical equipment, supplies, furnishings and replacement parts that serves as a turnkey solution for healthcare facilities and educational institutions.

**646**

## Dimedus, Inc

177 Maple st  
Needham, MA 2492  
<https://dimedus.com/>  
[info@dimedus.com](mailto:info@dimedus.com)

Developer of DIMEDUS software and hardware solution for medical education and postgraduate training

**136**

## Dr. Hologram

2665 N. Atlantic Ave #401  
Daytona Beach, FL 32118  
<http://www.drhologram.com>  
[jb@drhologram.com](mailto:jb@drhologram.com)

Modernizing Healthcare Education, Medical Training & Telemedicine with Holographic & AI Sciences

**643**

## Dynasthetics

3487 W. 2100 S. #300  
Salt Lake City, UT 84119  
<http://www.dynasthetics.com>  
[accounting@dynasthetics.com](mailto:accounting@dynasthetics.com)

Dynasthetics manufactures and distributes the VitalsBridge which allows you to use real patient monitors with simulators and manikins.

Sponsors are highlighted

**1304**

## EdEHR Technologies Inc

PO 2144 Stn Main  
Sidney  
BC  
V8L 3S6  
Canada  
<https://edeher.org>  
[info@edeher.org](mailto:info@edeher.org)

EdEHR provides the missing tool in healthcare simulations: the affordable and education focused EHR. EdEHR is empowering future healthcare leaders through digital competence. With EdEHR, students become effective digital communicators, improving patient care and operational efficiency. SimTiming© technology, seamless bar code medication administration, free support and its only \$2/month/active student.

**400**

## Education Management Solutions

1300 Morris Drive  
Lower Level  
Wayne, PA 19087  
<https://ems-works.com>  
[info@ems-works.com](mailto:info@ems-works.com)

As a leader in the healthcare simulation industry, EMS provides turnkey solutions to host, track, and measure learner performance and core competencies across environments, helping organizations align capabilities between education, training, and active provider care. For more than 30 years, EMS has provided knowledge, service, and technology that drives results.

**544**

## EHR Go

2901 Ashton Blvd  
Lehi, UT 84043  
<https://ehrgo.com/>  
[jramey@pennfoster.edu](mailto:jramey@pennfoster.edu)

Electronic health record simulator built for student practice.

**101**

## Elevate Healthcare

6300 Edgelake Drive  
Tampa, FL 34240  
<https://elevatehealth.net>  
[nancy.lapointe@elevatehealth.net](mailto:nancy.lapointe@elevatehealth.net)

Elevate Healthcare is a global leader in healthcare simulation, providing innovative solutions to enhance patient safety and clinical performance. Our comprehensive suite of offerings – including patient simulation, digital platforms, and the cutting-edge simulation center debriefing platform, Elevate Healthcare empowers healthcare professionals to improve patient outcomes and make healthcare safer.

**1209**

## Elsevier

1600 John F. Kennedy Blvd.  
Suite 1800  
Philadelphia, PA 19103  
<https://www.elsevier.com/>  
[d.stanton@elsevier.com](mailto:d.stanton@elsevier.com)

Elsevier Education empowers higher learning institutions and educators with exceptional content, learning technology, and assessment tools that help transform today's students into tomorrow's healthcare professionals.

**1143**

## Erler-Zimmer GmbH & Co.KG

Hauptstrasse 27  
Lauf  
77886  
Germany  
<https://erler-zimmer.de/>  
[info@erler-zimmer.de](mailto:info@erler-zimmer.de)

Erler-Zimmer is a leading manufacturer, providing products for medical education and simulation. We're standing for innovative solutions for healthcare since 1950. Specializing in high-quality anatomical models, simulators, medical task trainers and debriefing systems, Erler-Zimmer is committed to advancing medical education and improving patient care.

**1302**

## **eTrainETC, LLC**

PO Box 51858

Sarasota, FL 34232

<http://www.etrainhealthcare.com>

[contactus@etrainetc.com](mailto:contactus@etrainetc.com)

eTrainETC offers a robust authoring platform for the rapid creation of virtual simulations, which foster critical thinking and decision-making by allowing learners to apply knowledge and assess confidence. Our solution streamlines development with advanced AI features and enhances learning outcomes through sophisticated data analytics and targeted remediation tools.

**1213**

## **Extreme Simulations, Ltd**

188 Glen Cedar Road

Toronto

M6C3H1

Canada

<https://extremesimulations.com/>

[info@extremesimulations.com](mailto:info@extremesimulations.com)

Extreme Simulations develops and manufactures 3D printed manikins and task trainers featuring durability, realism, and ease of use and service. Our mission is to help minimize preventable death rates in healthcare by creating fully immersive training experiences so that "Your first incident should feel like the second".

**801**

## **Gaumard Scientific**

14700 SW 136th Street

Miami, FL 33196

<https://www.gaumard.com>

[sales@gaumard.com](mailto:sales@gaumard.com)

At Gaumard, our mission is to empower healthcare providers with innovative training solutions to accelerate progress toward safer patient care and improved patient outcomes for everyone. We develop and market state-of-the-art patient simulators and task

trainers designed to help providers practice and maintain skills across nearly all clinical specialties.

**1306**

## **Genius Academy**

11848 Jefferson Blds

Los Angeles, CA 90230

<http://www.experiencegeniusacademy.com>

[finance@experiencegeniusacademy.com](mailto:finance@experiencegeniusacademy.com)

Genius Academy provides immersive, academically-backed simulations that bring real-world scenarios to the classroom. Our technology fuses the power of AI and the art of cinematic engagement to revolutionize education and bridge the gap between theory and practice, increasing equity and access to crucial soft skills development.

**1045**

## **GTSimulators by Global Technologies**

10388 W. State Road 84

Suite 111

Davie, FL 33324

<https://www.gtsimulators.com>

[info@gtsimulators.com](mailto:info@gtsimulators.com)

GTSimulators offers medical simulators, cpr manikins and health education products to the educational market since 1992.

**744**

## **Health Scholars**

110 WOODLAND AVE STE 1

Reno, NV 89523

<https://www.healthscholars.com/>

[info@healthscholars.com](mailto:info@healthscholars.com)

Health Scholars believes in the limitless potential of people. By enhancing learning experiences, we can empower individuals to achieve more and drive progress. We provide an advanced training environment that leverages XR (Extended Reality) and AI to accelerate learning and enhance retention, offering scalable, repeatable, and cost-effective solutions.

**543**

## HealthySimulation.com

7181 N HUALAPAI WAY STE 130 #36  
LAS VEGAS, NV 89166  
<https://www.healthysimulation.com>  
[lance@healthysimulation.com](mailto:lance@healthysimulation.com)

HealthySimulation.com is the world's leading healthcare simulation resource website providing daily news, CE/CME webinars, job and conference listings, research highlights, vendor demos, community discussion, expert guides and more!

**1217**

## HVS SYSTEMS

1 PLACE PAUL VERLAINE  
BOULOGNE BILLANCOURT  
92100  
France  
<http://www.hvs-systems.com>  
[david.decourt@hvs-systems.com](mailto:david.decourt@hvs-systems.com)

Healthcare Video Systems is a company dedicated to web interfaces specialized in audio video recording for debriefing in medical simulation. We are compatible with all manikins on the market, with high compatibility with Gaumard manikins, enabling you to debrief directly with the actions performed on these manikins or with UNI software.

**645**

## Immersify

Immersify Education Ltd Empress Business  
Centre 380 Chester Road Manchester  
M16 9EA  
United Kingdom  
<https://immersifyeducation.com/Landing>  
[admin@immersifyeducation.com](mailto:admin@immersifyeducation.com)

Immersify provides lecturers and academics with interactive resources spanning from beginner to advanced content, for a comprehensive learning experience.

**845**

## IMT Analytics AG

Gewerbestrasse 8  
Buchs SG  
9470  
Switzerland  
<https://imtanalytics.com>  
[marketing@imtanalytics.com](mailto:marketing@imtanalytics.com)

Lung Simulation, Testlungs, GasFlow Analyzers For 30 years, we have been manufacturing precise gas flow analyzers for ventilators and anaesthesia machines, and cost-effective test lungs for ventilators. Discover our new lung simulator, alveo. Its innovative design realistically simulates various lung conditions, revolutionizing lung simulation. Find out how alveo makes a difference.

**1212**

## Innosonian America LLC

5760 NC 96 Hwy W  
Youngsville, NC 27596  
[Http://www.innosonian.global](http://www.innosonian.global)  
[Hello@innosonian.us](mailto>Hello@innosonian.us)

We are a revolutionary and innovative medical training tool organization. We manufacture and distribute training manikins ranging from BLS CPR manikins to more advanced training manikins.

**337**

## Inovus Medical

Unit 14 Wharton Street  
St Helens  
WA9 5AA  
United Kingdom  
<https://www.inovus.org>  
[info@inovus.org](mailto:info@inovus.org)

Inovus Medical aims to be the world's partner for surgical training, offering advanced simulators and a cutting-edge digital platform. Partnering with top educators, clinicians, and MedTech experts, we're transforming how surgeons learn through purposeful practice.

**429**

## **INTELLIGENT ULTRASOUND NA INC.**

1111 ALDERMAN DR  
 Suite 230  
 ALPHARETTA, GA 30005  
<https://www.intelligentultrasound.com/hello@intelligentultrasound.com>

Find out what's NEW from Intelligent Ultrasound! Ask our team about our Needling Add-on for BodyWorks Eve and the new Vascular Access Mode for NeedleTrainer – taking the use of your simulation platforms even further! See our experts demonstrate these latest updates LIVE every day on booth #429. Visit [www.intelligentultrasound.com](http://www.intelligentultrasound.com) now!

**1108**

## **Intelligent Video Solutions**

N53W24747 S. Corporate Circle  
 Sussex, WI 53089  
<https://ipivs.com>  
[sales@ipivs.com](mailto:sales@ipivs.com)

Intelligent Video Solutions develops video observation and recording systems for healthcare simulation. Its flagship product, VALT delivers secure video streams while enabling users to manage their own database. VALT users can initiate a session tagged with important data, stream live, and search recordings with a simple intuitive browser interface.

**100**

## **Interact Solution**

1101 Cory Circle  
 Greensboro, GA 30642  
<https://interactsolution.com>  
[hpulliam@cenergyit.com](mailto:hpulliam@cenergyit.com)

Simulation management software

**1243**

## **Invidia Medical**

Carl-Benz-Strasse 28  
 Emmingen-Liptingen  
 78576  
 Germany  
<http://www.invidia-medical.de>  
[info@invidia-medical.de](mailto:info@invidia-medical.de)

**547**

## **Johns Hopkins University School of Nursing - Center for Simulation and Immersive Learning**

525 N. Wolfe St  
 Baltimore, MD 21205  
<https://nursing.jhu.edu/faculty-research/research/areas-of-expertise/policy-leadership-administration/the-center-for-simulation-and-immersive-learning/son-simulationcenter@jhu.edu>

Our vision is to be a global leader in generating knowledge and implementing innovative simulation, immersive technology (AR, VR, Mixed Reality), robotics, and artificial intelligence-enabled solutions to advance nursing and interdisciplinary education and healthcare delivery to promote patient safety.

**346**

## **KOKEN CO., LTD.**

1-4-14 Koraku Bunkyo-ku  
 Tokyo  
 112-0004  
 Japan  
<https://www.kokenmpc.co.jp/english/index.html>  
[customer@kokenmpc.co.jp](mailto:customer@kokenmpc.co.jp)

In the fields of medicine, nursing and emergency care, the training of qualified professionals requires the use of educational medical models and other simulators developed by Koken. These models are individually handcrafted using Koken's original technology, giving them an amazingly realistic look and feel.

**537**

### **Kyoto Kagaku Co.,Ltd.**

15 Kitanekeya-cho, Fushimi-ku  
Kyoto  
612-8388  
Japan  
<http://www.kyotokagaku.com>  
[rw-kyoto@kyotokagaku.co.jp](mailto:rw-kyoto@kyotokagaku.co.jp)

Kyoto Kagaku is a Japanese simulation company with an over 75-year history. We produce simulators, anatomical models, and Ultrasound radiological phantoms for training the next generation of medical professionals. We believe it is our duty not only to deliver quality products to the present generation.

**601**

### **Laerdal Medical**

167 Myers Corners Road  
Suite 201  
Wappingers Falls, NY 12590  
<https://www.laerdal.com>  
[customerservice@laerdal.com](mailto:customerservice@laerdal.com)

Laerdal Medical is a world leader in healthcare education and resuscitation training. By using immersive technologies and data-centric insights we can help to increase survival, and improve healthcare quality. We empower lifesavers, and healthcare workers, to help them save more lives. Learn more: [www.laerdal.com](http://www.laerdal.com)

**247**

### **LifeLine Mobile, Inc.**

2050 Mc Gaw Road  
Columbus, OH 43207  
<https://lifelinemobile.com/>  
[Info@LifeLineMobile.com](mailto:Info@LifeLineMobile.com)

LifeLine Mobile custom manufactures mobile units for healthcare simulation, primary care or complete dental services on the road. Bring your services to distant locations and save time and money by equipment sharing. Contact us at [LifeLineMobile.com](http://LifeLineMobile.com) or call toll-free 1-800-678-LINE.

**817**

### **Limbs & Things**

12127 Apache Ave  
Savannah, GA 31419  
<http://www.limbsandthings.com>  
[josie.baker@limbsandthings.com](mailto:josie.baker@limbsandthings.com)

Collaborating with clinicians and healthcare professionals, Limbs & Things designs and manufactures innovative simulation trainers to enable competent and confident learning. Our cost-effective trainers provide the ideal solution for hands-on, realistic training. Limbs & Things are also proud to be the exclusive distributor of TruCorp; experts in lifelike simulation.

**109**

### **Lumeto**

793 Pharmacy Ave  
Scarborough  
ON  
M1L 3K2  
Canada  
<https://lumeto.com/>  
[contact@lumeto.com](mailto:contact@lumeto.com)

Lumeto's InvolveXR, the most adaptable AI-enabled sim lab with customizable AI capabilities, aims to reduce the social and financial costs of medical error through training tailored to your needs. Supporting healthcare educators and learners at all levels, InvolveXR enhances outcomes in decision-making, problem-solving, and complex procedures. Learn more at [www.lumeto.com](http://www.lumeto.com).

**1116**

### **Lumis**

5001 Baum Blvd.  
Suite 434  
Pittsburgh, PA 15213  
<https://lumiscorp.com/>  
[contact@lumiscorp.com](mailto:contact@lumiscorp.com)

Lumis' InSight Platform is an immersive platform for healthcare simulation that blends the best of cutting-edge AR/VR with traditional modalities of training at a third of the cost. Our projection-based approach can turn any task trainer, simulator, or surface into

an immersive learning environment. We are AR without headsets.

**342**

## Luna Labs USA

706 Forest Street  
Suite A  
Charlottesville, VA 22903  
<http://www.lunalabs.us>  
[trueclot@lunalabs.com](mailto:trueclot@lunalabs.com)

Luna Labs USA's TrueClot Bleeding Control Training Products and Dislotech Joint Reduction Trainers are designed with direct end user feedback. With help from EMS, Fire, Police, Athletic Trainers and Medical experts, we develop realistic simulation products for hands on training.

**137**

## Magic Ultrasound

3F, B21, Huachuang Animation Industry Park, No. 9 Huateng Road, Shiqi Town, Panyu District

Guangzhou  
511400  
China  
<http://www.magicultrasound.com>  
[rachel.chen@magicultrasound.com](mailto:rachel.chen@magicultrasound.com)

Magic Ultrasound training models combine high-quality imaging, realistic anatomy, and flexible modules that cater to the unique needs of practitioners in diverse specialties. Magic Ultrasound enables healthcare providers to build confidence and precision in ultrasound techniques, empowering them to deliver improved patient care with accuracy and efficiency.

**1312**

## MaxFi Surgical Simulations

6700 Stephens Station Rd.  
Suite 107  
Columbia, MO 65202  
<https://max-fi.com/>  
[info@max-fi.com](mailto:info@max-fi.com)

MaxFi technology revolutionizes medical simulations by delivering unparalleled authenticity, enhancing surgical outcomes, facilitating the development and adoption of

new medical devices, and potentially saving military lives through improved battlefield paramedic skills.

**447**

## Mayo Clinic Multidisciplinary Simulation Centers

200 1st St SW  
Rochester, MN 55905  
<https://college.mayo.edu/academics/simulation-centers/>  
[rsteducationadmindst1@mayo.edu](mailto:rsteducationadmindst1@mayo.edu)

Mayo Clinic Multidisciplinary Simulation Centers are located at Mayo's campuses in Phoenix/Scottsdale, Arizona; Jacksonville, Florida; and Rochester, Minnesota. The centers offer simulated experiential learning via task training, extended reality, and high-fidelity scenarios using manikins and medical actors. Simulation Fellowships and Instructor Development courses are offered.

**344**

## Med One Group

10172 South 1300 East  
Sandy, UT 84094  
<https://www.medonegroup.com/>  
[info@medonegroup.com](mailto:info@medonegroup.com)

Med One offers the most in-demand infusion pumps and medical equipment for your nursing simulation labs. Our equipment comes with a 1-year warranty and is made patient-ready by our in-house Biomed team.

**1316**

## Medability

Geretsrieder Str. 10A  
Munich  
81379  
Germany  
<https://medability.de/>  
[sales@medability.de](mailto:sales@medability.de)

Medability is a German company, which develops and produces high-end surgical simulators that empower professional education and sales to build up surgeon's confidence in using innovative surgical instruments.

*Sponsors are highlighted*

**1133**

## **MedAffinity Corp**

1400 Village Square BLVD. Suite 3, #509

Tallahassee, FL 32312  
<http://www.medaffinity.com>  
[wwatson1@medaffinity.com](mailto:wwatson1@medaffinity.com)

MedAffinity software is designed to make the documentation process feel as natural as possible, with an interface that looks, acts, and feels like a real document. MedAffinity easily adapts to new documentation and curriculum requirements without any of the delays, expensive upgrades, or convoluted configurations associated with other alternatives.

**130**

## **Medical Harbour**

Alameda Lorena 269  
São Paulo  
01424-002  
Brazil  
<http://www.medicalharbour.com>  
[italo.plaza@afya.com.br](mailto:italo.plaza@afya.com.br)

A virtual environment with thousands of possibilities. Content related to the teaching of human anatomy, such as the 3D Virtual Human Anatomical Atlas, the 3D Virtual Cadaver, contents of Physiology, Histology, Embryology, Cytology, Medical Simulation and several others.

**1109**

## **Medical Shipment**

8060 Saint Louis Avenue  
Skokie, IL 60076  
<http://www.medicalshipment.com>  
[Kendall@medicalshipment.com](mailto:Kendall@medicalshipment.com)

Medical Supplies - Nursing school kits

**1309**

## **Medical Simulation Technologies**

Miechowska 5b/4  
Krakow  
30-055  
Poland  
<https://www.mstech.eu>  
[office@mstech.eu](mailto:office@mstech.eu)

Medical Simulation Technologies specializes in cutting-edge simulation technologies for interventional cardiology. Our portfolio focuses on training healthcare professionals in echocardiography and structural heart procedures. By providing highly realistic simulations, we aim to enhance both the skill and confidence of medical practitioners. Our innovative solutions ensure safer, more efficient procedures.

**123**

## **Medical X**

Hazenkamp 50  
Arnhem  
6836 BA  
Netherlands  
<https://medical-x.com>  
[info@medical-x.com](mailto:info@medical-x.com)

MEDICAL-X is specialized in the design, development, manufacturing, marketing and distribution of simulation products for medical teaching and training. Our mission is to provide healthcare professionals with simulation training solutions and cutting-edge technological simulators that are the best to teach and train clinical skills without risk to actual human patients.



**242**

## **MEDICFX**

10 Collins Street  
Morningside  
Auckland  
1025  
New Zealand  
<http://www.medicfx.com>  
[info@medicfx.com](mailto:info@medicfx.com)

MedicFX, leveraging expertise from New Zealand's film industry we craft hyper-realistic and affordable medical simulation tools that elevate healthcare training that save lives and improves patients outcomes.

**644**

## **MedtrainAI Technologies Private Limited**

15U Telipara Lane, Dhakuria  
Kolkata  
700031  
India  
<https://www.medtrain.ai/>  
[marketing@medtrainai.com](mailto:marketing@medtrainai.com)

MedTrainAI is committed to delivering world-class medical simulation solutions that are both effective and affordable. By leveraging the power of technology, we aim to revolutionize medical training and improve patient outcomes.

**1215**

## **Medtribe**

Admiral Rodney House, 17 Church Street  
Walton-On-Thames  
KT12 2QP  
United Kingdom  
<https://medtribe.com/>  
[ciaran@medtribe.com](mailto:ciaran@medtribe.com)

Medtribe gives you everything needed to run training events effortlessly, with tools for bookings, attendance, surveys, certificates, and community management—all in one place. Trusted worldwide by educators to reduce admin work, Medtribe lets you focus on impactful events and engaging your community.

**929**

## **MedVision**

14300 Carlson Circle  
Tampa, FL 33626  
<https://www.medvisionsim.com/>  
[sales@medvisiongroup.com](mailto:sales@medvisiongroup.com)

**1314**

## **MedVR Education**

3750 Market St  
Philadelphia, PA 19104-3102  
<https://medvr.education/>  
[support@medvr.education](mailto:support@medvr.education)

Medical training with VR and AI-powered virtual patients. Our simulations provide practice in a controlled setting and can be customized to meet your requirements. Performance assessment features track progress and provide feedback. We aim to build the world's largest XR healthcare to prepare future medical professionals for real-world medical challenges.

**1145**

## **MGH Institute of Health Professions**

36 1st Ave  
Boston, MA 2129  
<https://www.mghihp.edu/>  
[hped@mghihp.edu](mailto:hped@mghihp.edu)

MGH Institute of Health Professions – Health Professions Education (HPEd) The HPEd department at MGH Institute of Health Professions offers innovative graduate programs that empower healthcare professionals to excel as educators and leaders. Our programs focus on evidence-based practices, interdisciplinary collaboration, and leadership development to improve healthcare education and patient outcomes.

**143**

## **MicroHealth LLC**

8229 Boone Blvd Ste 500  
Vienna, VA 22182  
[https://www.microhealthllc.com/  
events@microhealthllc.com](https://www.microhealthllc.com/events@microhealthllc.com)

At MicroHealth, we're a small business making a big impact in the federal IT space. We're a leading medical simulation software developer and integrator capable with extensive experience developing medical simulation testing programs for the U.S. government and its agencies. MicroHealth is a service-disabled, veteran-owned, SBA 8(a) small business.

**847**

## **Moulage Sciences and Training**

6923 Narcoossee Rd  
Suite 629  
Orlando, FL 32822  
<https://www.moulagesciences.com>  
[stephanie.acosta@moulagesciences.com](mailto:stephanie.acosta@moulagesciences.com)

MST recreates the intensity of emergency trauma care using the latest techniques in special effects makeup artistry. MST offers a comprehensive portfolio of moulage training products that are skin safe, durable, and reusable. MST provides a variety of training courses to teach moulage techniques to trainees.

**1315**

## **Nanchang Virtual Reality Research Institute Co.**

Kechuang City, No. 5335, Jiulong Avenue,  
Honggutan New District, Nanchang, Jiangxi,  
China  
Nanchang  
330108  
China  
<http://www.nc-vr.cn/>  
[linj@vrczx.com](mailto:linj@vrczx.com)

Focusing on the key common technical problems restricting the development of China's

virtual reality industry, building six platforms for key common technology research and development, pilot test certification, testing, technical services, talent training and international cooperation.

**729**

## **Nasco Healthcare**

16 Simulaids Drive  
PO Box 1289  
Saugerties, NY 12477  
<https://nascohealthcare.com>  
[info@nascohealthcare.com](mailto:info@nascohealthcare.com)

Booth 729 - Nasco Healthcare products prepare frontline healthcare professionals to Be READY the moment they are called upon, helping them deliver optimal patient outcomes and save lives. We deliver hyper-realistic, reliable, affordable simulation solutions that enable everyday heroes to be at their best, the moment they are called.

**647**

## **National Training & Simulation Association (NTSA)**

2101 Wilson Blvd  
Suite 700  
Arlington, VA 22201-3061  
<http://www.ntsaa.org>  
[sburch@ntsaa.org](mailto:sburch@ntsaa.org)

Organizations and individuals in the Modeling & Simulation and Training industries are represented through membership in the National Training & Simulation Association (NTSA). NTSA provides the training, simulation, related support systems, and training services industries a focused, formal organization to represent and promote their business interests.

**829**

## **neosim AG**

Tardisstrasse 225  
Zizers  
7205  
Switzerland  
<http://www.neosim.ch>  
[office@neosim.ch](mailto:office@neosim.ch)

neosim is a Swiss company with the mission to bring autonomous patient simulators to the training community. Autonomous simulators do not need operator input during simulation - they can be set to represent a certain pathology and then be treated with respiratory care therapy methods.

**446**

## **NEWBASE Inc.**

9nd floor, 324 Bongeunsa-ro, Gangnam-gu,  
Seoul, Republic of Korea (Samsungdong,  
Royal Building)  
Seoul  
6097  
Korea, South  
<https://www.newbase.kr>  
[contact@newbase.kr](mailto:contact@newbase.kr)

We at 'Newbase' develop VR-based medical education simulation content called 'Medi-crew'. Medicew provides realistic virtual simulations and feedback from medical experts.

**445**

## **Northwestern University, Northwestern Simulation**

240 E Huron  
Suite 1-200  
Chicago, IL 60611  
<https://www.feinberg.northwestern.edu/sites/simulation/index.html>  
[d-irvin@northwestern.edu](mailto:d-irvin@northwestern.edu)

Northwestern Simulation is a surgical and medical simulation-based training facility for healthcare professionals where early and advanced learners can develop stage-appropriate surgical and clinical skills to mastery levels in various supportive, simulated healthcare environments.

**1235**

## **One World Design and Manufacturing Group**

131 Main Street  
Whitehouse Station, NJ 8889  
<http://www.oneworldddmg.com>  
[info@oneworldddmg.com](mailto:info@oneworldddmg.com)

One World DMG develops life-like simulators focused on Women's Health, including breast health, mammography, surgical, gynecological, and maternal healthcare. Our simulators provide safe, comfortable, and effective training coupled with realistic clinical experience. With a strong commitment to quality, we empower healthcare professionals to build skills and gain invaluable experience.

**329**

## **Operative Experience**

1007 Old Philadelphia Road  
Suite 300  
Aberdeen, MD 21001  
<http://www.operativeexperience.com>  
[info@operativeexperience.com](mailto:info@operativeexperience.com)

Operative Experience is a leading manufacturer of high-fidelity patient simulators for training healthcare practitioners, first responders & military personnel including PCCS/TCCS Pro - ultra-realistic simulators for trauma care training; RealMom, a hyper-real birthing simulator with lifelike skin and tissue; and C-Celia—a suite of fully-operative simulators for training emergency obstetrics procedures.

**944**

## **Orlando Health Strategic Innovations**

1126 S Division Ave  
Orlando, FL 32835  
<https://www.orlandohealth.com/strategicinnovations>  
AmyAdministration.Stanley@orlandohealth.com

OHSI is the idea accelerator and commercialization arm of Orlando Health. It helps design, develop and implement technologies core to solving patient and clinical care needs, many of which are centered around hospital simulation and education for improving patient outcomes.

**345**

## **ORSIM by Airway Simulation Limited**

25A Ranui Road  
Remuera  
Auckland  
New Zealand  
<http://www.ORSIM.com>

ORSIM® - a cutting-edge learning device for airway competency Used by world-leading airway courses and sim centers, the ORSIM bronchoscope simulator includes over 50 scenarios, ranging from the Gopher Chase to complex airway pathology in adults and children. Exceptional graphics create an immersive learning experience to safely improve bronchoscopy skills

**909**

## **Oxford Medical Simulation**

101 Arch Street, 8th Floor  
Boston, MA 2110  
<https://oxfordmedicalsimaltion.com>  
marketing@oxfordmedicalsimaltion.com

**229**

## **PANCKOO INC.**

Yuanjia Life Science and Technology  
Industrial Park, Building 1, 603 Jiushui East Road,  
Laoshan District, Shandong Province  
Qingdao  
266101  
China  
<http://www.epanckoo.com>  
toni.wang@panckoo.com

Panckoo Inc., where innovation & services meet dedication in healthcare simulation. From products to turn-key solutions, our core competencies have been continuously expanding through the years from task trainers to high-fidelity patient simulators, "Brown Phantom" ultrasound trainers, surgical simulators and combat casualty care trainers.

**642**

## **Paradigm Medical Systems**

PO Box 80007  
Portland, OR 97280-1007  
<https://www.paradigmmedicalsyste.ms.com/>  
info@parmedsim.com

**1044**

## **Patient Ready Inc.**

450 Design Ave  
Winston Salem, NC 27101  
<https://www.patientready.net/>  
ryan@patientready.net

Patient Ready collaborated with nursing faculty, technologists, and storytellers to craft simulations that would enhance nursing curriculum by providing hands-on experience and promote the development of clinical judgment skills. Our immersive training platform is poised to change the way we think about training and preparedness.

**837**

## **PCS.ai**

1400 Village Square Blvd #3-83185  
Tallahassee, FL 32312  
<http://www.pcs.ai>  
[info@pcs.ai](mailto:info@pcs.ai)

PCS.ai delivers best-in-class conversational AI to healthcare students across modalities. With PCS Spark, students are able to engage with virtual simulated patients on-screen, or in virtual reality. PCS SimVox brings conversational AI to any manikin with its innovative smart speaker.

**1137**

## **Pedi-Ed-Trics Emergency Medical Solutions, LLC**

1548 Corolla Court  
Reunion, FL 34747  
<http://www.PediEd.com>  
[Info@PediEd.com](mailto:Info@PediEd.com)

Pedi-Ed-Trics: Saving The Lives Of Children Through Education Creating a world where all levels of medical professionals have access to high-quality pediatric emergency training. Our "In Seconds" hands-on products help reduce errors, lessen the emotional trauma for responders, and bring children back home to their families.

**1325**

## **PHACON, INC.**

2801 Buford Highway  
STE 190  
Atlanta, GA 30329  
<https://phacon.de/en>  
[info@phacon.us](mailto:info@phacon.us)

3D printed anatomy that focuses on surgical cases with a haptic feel. Re-create any surgery!

**1046**

## **Plan 3D**

Limache 1558  
Vina del Mar  
2520605  
Chile  
<http://www.plan3d.cl>  
[operaciones@plan3d.cl](mailto:operaciones@plan3d.cl)

At Plan 3D we seek to support teachers and students by creating a new generation of task trainers and simulators that offer realistic, efficient and eco-friendly experiences.

**737**

## **Pocket Nurse**

610 Frankfort Road  
Monaca, PA 15061  
<https://www.pocketnurse.com/>  
[info@pocketnurse.com](mailto:info@pocketnurse.com)

Nurse-owned since 1992, Pocket Nurse® offers over 5,300 products for simulation-based learning from trusted industry brands. Curated by our team of Registered Nurses, Pocket Nurse® products serve the needs of many healthcare curricula and specialties such as nursing, EMS, CPR training, pharm tech, physical therapy, allied healthcare, and more.

**745**

## **Polhemus**

40 Hercules Dr. PO Box 560  
Colchester, VT 5446  
<https://polhemus.com/>  
[Sales@polhemus.com](mailto:Sales@polhemus.com)

For over 55 years, Polhemus has been the global leader in motion tracking, delivering hardware trusted worldwide. Powered by our proprietary electromagnetic technology, our systems capture precise, real-time movement of people and objects. From advanced medical training to cutting-edge research, EEG digitization, and beyond, Polhemus sets the standard in tracking.

144

### Polytek Development Corp.

55 Hilton Street  
Easton, PA 18042  
<https://www.polytek.com>  
[sales@polytek.com](mailto:sales@polytek.com)

Polytek delivers high quality products that enable you to manufacture clinically accurate, durable medical models and body parts. We partner with you during your specification process to help you select from standard products or develop custom formulas that meet your requirements such as hardness, cure speed, feel, tack, rebound, resistance.

1307

### PRAC+SAFE

2145 SW 93RD COURT  
MIAMI, FL 33165  
<http://www.pracsafe.com>  
[youssef@pracsafe.com](mailto:youssef@pracsafe.com)

Prac+Safe® is an online training and assessment tool that uses virtual 2-D simulations to develop proficiency in key areas of math, dosage calculations, and medication administration by using engaging & realistic video learning materials and animations that simulate REAL CLINICAL PRACTICE.

245

### ProjectConcert

1101 Walnut Street  
STE 101  
Kansas City, MO 64106-2153  
<http://www.projectconcert.com>  
[debbie.akbari@akcia.com](mailto:debbie.akbari@akcia.com)

ProjectConcert is an innovative, all-in-one, cloud-based accreditation platform designed to support and enhance all programs, both online and traditional. Offering 19 comprehensive solutions, ProjectConcert is focused on competency-based education and seamlessly integrates accreditation data while streamlining experiential education, simulation experiences, and assessments.

942

### RadSim

311 23rd Street Ext Suite 200  
Pittsburgh, PA 15215  
<https://www.rad-sim.com/>  
[sales@pstnet.com](mailto:sales@pstnet.com)

RadSim offers MRI Simulators (mock scanners). The Encore model comes with a realistic façade that mimics some of the new scanners with respect to size and shape, as well as provides features such as an integrated laser positioning crosshair, finer table movements, an emergency squeeze ball and stop button.

236

### Reynolds Advanced Materials

6512 Pinecastle Blvd  
Orlando, FL 32809  
<http://www.reynoldsam.com>  
[orlando@reynoldsam.com](mailto:orlando@reynoldsam.com)

Mold making and casting materials

1318

### Safe Sleep Simulation

10622 Parkview Plaza Dr  
Fort Wayne, IN 46845  
<http://www.safesleepsimulation.com>  
[info@safesleepsimulation.com](mailto:info@safesleepsimulation.com)

The goal of incorporating the Safe Sleep Simulation toolkit is to utilize visual representations and experiential learning to enhance knowledge retention, understanding of why current safe sleep recommendations exist, and increase adherence to safe sleep practices taught by educators.

939

### safeMedicate

10691 Marie Street  
Fort Myers, FL 33905  
<https://www.safemedicate.net/>  
[jody@safemedicate.net](mailto:jody@safemedicate.net)

safeMedicate is an online educational application designed to empower learners

as they develop and improve their drug dosage calculation skills. Using safeMedicate, students engage the learning environment, practice their skills, and self-assess while faculty administer assessments to monitor and evaluate progress. Please visit [www.safe-medicate.net](http://www.safe-medicate.net) for more information or email [sales@safeMedicate.net](mailto:sales@safeMedicate.net).

**147**

## **Sawbones**

10221 SW 188th Street  
Vashon, WA 98070  
<https://www.sawbones.com/>  
[info@sawbones.com](mailto:info@sawbones.com)

Sawbones is at the forefront of innovation in healthcare simulation, providing cutting-edge anatomical models that enhance medical training. Our solutions offer relevant, hands-on experiences, allowing healthcare professionals to practice complex procedures in a controlled environment. Our commitment to advancing medical education drives continuous improvement in simulation technology and training outcomes.

**1324**

## **Sim U Suit, Inc.**

1518 Leola St  
Kaysville, UT 84037  
<http://www.simusuit.com>  
[customerservice@simusuit.com](mailto:customerservice@simusuit.com)

Obesity simulation experts offering bariatric simulation suits, bariatric manikins, edema leg and arm sleeves, custom products, and more.

**742**

## **Sim\*Vivo**

890 Barcarmil Way  
NAPLES, FL 34110  
<http://www.sim-vivo.com>  
[tina@sim-vivo.com](mailto:tina@sim-vivo.com)

Sim\*Vivo offers a comprehensive line of high-fidelity, low-cost integrated task trainers designed for medical and nursing students, residents, and other medical trainees seeking practical training. Explore our wide range of simulation products to enhance your surgical skills while gaining confidence in your technique.

**128**

## **Sim2Grow**

1585 Dale Ct  
Beavercreek, OH 45432  
<http://www.sim2grow.com>  
[kateri@sim2grow.com](mailto:kateri@sim2grow.com)

Introducing Sim2Grow: the med room to bedside training system designed by nurses for nurses. Our user-friendly system provides unlimited hands-on practice of safe medication administration. Addressing the need for affordable, realistic teaching tools, Sim2Grow has been trusted by nursing schools since 2015, delivering reliable training day in and day out.

**243**

## **SIMBOOST**

2 Ben Gurion Street  
Ramat Gan  
5257334  
Israel  
<https://www.simboost.com/>  
[assaf.sofrin@simboost.com](mailto:assaf.sofrin@simboost.com)

Observe, capture, tag and debrief videos of simulation. Manage activities' scheduling, author custom scenarios, perform assessments and boost your simulation training.

**1047**

## **SIMEDITA srls**

Via Panciatichi 40/11  
Firenze  
50127  
Italy  
<https://simzine.news/>  
[info@simzine.it](mailto:info@simzine.it)

SIMZINE is the first international healthcare simulation magazine. Stay up to date on all the latest SIM news in English, Spanish, Italian, and French.

**117**

## **SIMStation Inc.**

263 Northeast 61st Street  
Miami, FL 33137  
<https://www.simstation.com>  
[office@simstation.com](mailto:office@simstation.com)

SIMStation is a global leader in AV and assessment systems for simulation centers. We offer user-friendly software for live control, recording, and broadcasting medical simulations, with specialized exam management and assessment features. Trusted since 2012, we continue to be a reliable partner in the simulation community worldwide.

**209**

## **Simulab Corporation**

13001 48th Ave S  
Seattle, WA 98168  
<https://www.simulab.com/>  
[info@simulab.com](mailto:info@simulab.com)

Simulab is the trusted partner in simulation, offering realistic, affordable, and user-friendly simulators for healthcare professionals. With over 30 years in soft-tissue simulation, Simulab provides innovative training solutions with anatomical realism, ease of use, and affordability to meet evolving healthcare education needs.

**126**

## **Simulation Training Resource**

37 West Fairmont Ave  
Building 100  
Savannah, GA 31406  
<http://www.strsim.com>  
[jcooper@strsim.com](mailto:jcooper@strsim.com)

Kyoto Kagaku's New Products: Deep Vein Thrombosis and Prostate Ultrasound. Also, Female Pelvic and Fetus Ultrasound. STR is the Kyoto Kagaku specialist.

**1147**

## **SimVS**

909 Helderberg Trail  
East Berne, NY 12059  
<https://www.simvs.com/>  
[greg@simvs.com](mailto:greg@simvs.com)

SimVS develops simulators for assessment, treatment and communication for healthcare education. SimVS-IV is the world's first IV pump simulator and reduces many of the problems associated with infusion pump training. It allows students to develop proficiency in a safe environment. Exciting innovations for SimVS-IV will be launched at IMSH 2025.

**611**

## **SimX VR**

548 Market St #87927  
San Francisco, CA 94104  
<http://www.simxar.com>  
[Contact@simxar.com](mailto:Contact@simxar.com)

SimX is the world's most comprehensive virtual reality (VR) medical simulation platform, trusted by healthcare professionals worldwide to prepare for real-life clinical challenges. Developed by healthcare professionals for healthcare professionals, SimX offers hundreds of VR-simulated patient encounters, designed to provide immersive, affordable, and highly accessible training experiences.



**637**

## **SonoSim, Inc.**

1738 Berkeley Street  
Santa Monica, CA 90404  
<https://www.sonosim.com>  
[events@sonosim.com](mailto:events@sonosim.com)

**116**

## **Stealth Simulation**

PO Box 824863  
Pembroke Pines, FL 33082  
<https://www.stealthsimulation.com>  
[info@stealthsimulation.com](mailto:info@stealthsimulation.com)

Stealth Simulation® develops technology-driven innovative solutions to increase the fidelity of standardized patient simulations without disturbing their realism. Visit our booth to experience the DxBAT® auscultation trainer, which automatically tracks a real stethoscope and delivers simulated auscultatory findings onto it while broadcasting in real-time to remote learners on DxCAST.

**1321**

## **Stratasys**

1 Holtzman St. Science Park  
P.O. Box 2496  
Rehovot  
7612401  
Israel  
<https://www.stratasys.com/en/industries-and-applications/3d-printing-industries/medical/>  
[Medical@stratasys.com](mailto:Medical@stratasys.com)

Our solutions accelerate product development, improve surgical planning\*, and enrich learning. Stratasys additive technology and materials enhance personalized healthcare, and medical education and drive innovative manufacturing applications. By enabling the fast, flexible production of medical jigs, surgical aids, and lifelike models with un-matched biomechanical accuracy, our end-to-end medical 3D Printing solutions.

**809**

## **Surgical Science**

811 First Ave  
Seattle, WA 98104  
<http://www.surgicalscience.com>  
[info@surgicalscience.com](mailto:info@surgicalscience.com)

Surgical Science is a leading provider of medical simulation training and software solutions. Together with healthcare partners and customers worldwide, we enhance patient safety and healthcare outcomes through evidence-based simulation to improve clinical proficiency and performance.

**1036**

## **SurgMate Co., Ltd.**

Rm. 7, 7F., No. 99, Sec. 1, Xintai 5th Rd.  
Xizhi Dist.  
New Taipei City  
221  
Taiwan  
[https://www.surgmate.com/](https://www.surgmate.com/service@surgmate.com)  
[service@surgmate.com](mailto:service@surgmate.com)

SurgMate is a Taiwan-based company that provides hands-on medical skills training platforms and related CDMO services. We aim to enable healthcare professionals to acquire knowledge and skills via integrated simulation solutions. With a keen focus on minimally invasive surgery and point-of-care ultrasound, we offer immersive, practical, and affordable solutions.

**1131**

## **SynDaver**

8506 Benjamin Road  
Tampa, FL 33634  
<http://www.syndaver.com>  
[c.revilla@syndaver.com](mailto:c.revilla@syndaver.com)

SynDaver manufactures the world's most sophisticated synthetic human and animal tissue analogs, body parts and full bodies. Our Human and Canine can bleed, breathe, and employ hundreds of replaceable muscles, bones, organs and vessels that are made from materials that mimic the mechanical, thermal and physicochemical properties of living tissues.

**217**

## **TacMed Simulation**

1250 Harris Bridge Road  
Anderson, SC 29621  
<https://tacmedsolutions.com/simulation@tacmedsolutions.com>

TacMed Simulation™ provides cutting-edge training with high-fidelity TraumaFX® manikins for first responders and military medics. These life-like simulators offer autonomous responses, creating an immersive experience that builds confidence and expertise for working under stress. The realistic training prepares responders for effective field treatment.

**1229**

## **Tactile VR**

7413 Windy Meadow Drive  
Aubrey, TX 76227  
<http://www.TactileVR.com>  
[info@tactilevr.com](mailto:info@tactilevr.com)

Tactile VR is an AI-Powered VR Nursing Simulation Platform designed by nursing educators. With the combination of AI & VR, students can access more realistic, on-demand clinical practice while also giving the educator more power to design and facilitate using Artificial intelligence.

**917**

## **Tellyes Scientific Inc.**

3rd Floor, West 6th Building,  
18 West HaiTai Road, Tianjin, China  
Tianjin  
300384  
China  
<https://www.tellyes.com/en/lyra.zhang@tellyes.com>

Tellyes Scientific INC. is a state-level high-tech enterprise with R&D, production and sales of medical education products as its main business. It has carried out innovation, research and development in various fields supported by modern technology, providing 12 series and more than 1,000 simulators based on the above technologies.

**746**

## **The Apprentice Doctor**

1100 Military Road  
Kenmore, NY 14217  
<http://www.kits.theapprenticedoctor.com>  
[judy@theapprenticedoctor.com](mailto:judy@theapprenticedoctor.com)

Supplier of Medical Skills Simulation Training Kits

**227**

## **The Chamberlain Group**

934 Main Street  
Great Barrington, MA 1230  
<http://www.thecgroup.com>  
[bill@thecgroup.com](mailto:bill@thecgroup.com)

The Chamberlain Group designs, develops, and manufactures high fidelity mimetic anatomy for: Surgical and interventional training Research Medical Device development Sales and marketing

**233**

## The Debriefing Academy

#2314 - 246 Stewart Green SW  
Calgary  
AB  
T3H 3C8  
Canada  
<http://www.thedebriefingacademy.com>  
[admin@thedebriefingacademy.com](mailto:admin@thedebriefingacademy.com)

The Debriefing Academy offers innovative education from leading international experts aimed at unlocking the power of effective debriefing conversations on translating knowledge into practice and transforming workplace culture using a variety of courses to suit any learning needs, through in-person and virtual formats, as well as an asynchronous learning platform.

**846**

## The Gathering of Healthcare Simulation Technology Specialists (SimGHOSTS)

7181 N. Hualapai Way, Suite 130-925  
Las Vegas, NV 89166  
<http://simghosts.org.com>  
[admin@simghosts.org](mailto:admin@simghosts.org)

SimGHOSTS is a healthcare education community that empowers users of simulation technology to improve learning and patient care outcomes. If you take your tech seriously, join SimGHOSTS! A membership provides premium resources, online course, a video library, event discounts, a member forum, special interest groups, and a professional development portfolio.

**1241**

## The University of Alabama at Birmingham

1716 9th Avenue South  
Birmingham, AL 35233  
<https://www.uab.edu/home/juanitra@uab.edu>

UAB is an internationally renowned research university and academic medical center known for its innovative and interdisciplinary approach to education.

**1120**

## Toltech

12635 E Montview Blvd, Ste 350  
Ste 350  
Aurora, CO 80045  
<http://www.toltech.net>  
[pat.scherzinger@toltech.net](mailto:pat.scherzinger@toltech.net)

Touch of Life Technologies (Toltech) focuses on improving healthcare through better education and training. Toltech solutions provide a platform to experience real anatomy in virtual environments across a range of devices. Interacting with real bodies, learners gain a deeper understanding of the structural and functional complexities of the human body.

**108**

## UbiSim Inc

2800-600 boul.  
Rene-Levesque West  
Montreal  
QC  
H3B 1S6  
<https://www.ubisimvr.com/>  
[info@ubisimvr.com](mailto:info@ubisimvr.com)

UbiSim is an immersive VR simulation platform for nursing education and the world's first designed by nurses, for nurses. UbiSim's high-fidelity simulation experience empowers learners to safely develop clinical judgment skills, confidence, and a heart for patient-centric care. Recognized as a TIME Best Invention 2024, UbiSim is redefining nursing education.

**545**

## **United Tissue Network, Inc**

3620 E Wier Ave  
Phoenix, AZ 85040  
<http://www.unitedtissue.org>  
[Clientinfo@unitedtissue.org](mailto:Clientinfo@unitedtissue.org)

United Tissue Network (UTN) is an AATB accredited, non-transplant anatomical tissue bank providing cadaver specimens to approved medical professionals dedicated to the advancement of medical technology, training and education. Cadavers provide the most realistic representation of human anatomy, making human tissue an ideal model to perform advanced surgical training on.

**619**

## **University of Miami Gordon Center for Simulation & Innovation in Medical Education**

1120 N.W. 14th St.  
1st Flr.  
Miami, FL 33136  
<http://www.gcrme.miami.edu>  
[rrodrigu@med.miami.edu](mailto:rrodrigu@med.miami.edu)

With a rich history spanning half a century, the Gordon Center has been at the forefront of advancing multi-professional health-care education through simulation-based training. Our notable programs include the all-new Harvey® Premier—a state-of-the-art cardiopulmonary patient simulator, the innovative Advanced Stroke Life Support® Blended Learning, and the versatile UMedic e-learning programs.

**546**

## **University of Washington, Division of Healthcare Simulation Science**

1959 NE Pacific Street  
Box 356410  
Seattle, WA 98195  
<https://wish.washington.edu>  
[shermm@uw.edu](mailto:shermm@uw.edu)

University of Washington, Division of Healthcare Simulation Science

**946**

## **Vantari VR**

2019 Boren Ave  
Apt # 2909, The Ivey on Boren  
Seattle, WA 98121  
<https://www.vantarivr.com/>  
[info@vantarivr.com](mailto:info@vantarivr.com)

Vantari is the 'Flight simulator' for Healthcare – helping doctors practice procedures in a safe, scalable Virtual Reality environment prior to performing them on real patients in order to eliminate medical error and improve patient outcomes.

**943**

## **VATA**

308 S. Sequoia Parkway  
Canby, OR 97013  
<http://www.vatainc.com>  
[info@vatainc.com](mailto:info@vatainc.com)

**120**

## **Vcom3D**

3452 Lake Lynda Dr. Ste. 151  
Orlando, FL 32817  
<https://www.vcom3d.com/>  
[MedSim@vcom3d.com](mailto:MedSim@vcom3d.com)

Vcom3D, an Orlando-based, woman-owned small business, provides immersive medical simulation and training systems based on plug-and-play architectures with interoperable physical and virtual patient and treatment modules.

**347**

## **VirtaMed**

16144 Churchview Dr  
Lithia, FL 33547  
<https://www.virtamed.com/en/sales@virtamed.com>

VirtaMed is the world leader in high-fidelity virtual reality simulation for training of minimally invasive diagnostic and therapeutic interventions in orthopedics, laparoscopy, urology, and OB/GYN. VirtaMed also creates customized simulators for medical associations and medical device companies using original instruments and anatomic models for realistic tactile feedback.

**1225**

## **VRpatients**

70 Weil Way  
Wilmington, OH 45177  
<http://www.vrpatients.com>  
[contact@vrpatients.com](mailto:contact@vrpatients.com)

VRpatients® is a no-code platform for creating VR and MR nursing simulations that seamlessly blend into your existing training environment. The patient simulations are asynchronous and accessible 24/7, deployed on Quest and VIVE headsets, or Web Browser, and adapt to any curriculum, giving educators flexibility and ownership in simulation education.

**542**

## **WISER**

230 McKee Place  
Suite 300  
Pittsburgh, PA 15213  
<https://www.wisersimulation.org/wiseradminteam@upmc.edu>

WISER is dedicated to healthcare education and research. WISER features instructional technologies and methods to develop healthcare education programs that are targeted towards improving the welfare and safety of the public. WISER's mission includes the application of standards of excellence and professionalism to study the efficacy of educational programs.

**1100**

## **Wolters Kluwer**

Two Commerce Sq  
2001 Market Street  
Philadelphia, PA 19103  
<http://wolterskluwer.com/en/customerservice@lww.com>

Lead a nursing transformation and empower nursing staff with evidence-based solutions that help to drive clinical excellence, deliver quality patient care and improve staff engagement. Wolters Kluwer provides trusted clinical technology and evidence-based solutions that engage clinicians, patients, researchers, and the next generation of healthcare providers.

**146**

## **Xiamen cube magic 3D technology co.Ltd**

The 6th Floor, Building 23-1, Wanghai Road,  
Software Park  
Siming District, Xiamen City, Fujian Prov  
Xiamen  
361008  
China  
<http://www.cubemagicvr.com>  
[melissa79@126.com](mailto:melissa79@126.com)

Xiamen cube magic 3D technology Co.Ltd is a leading service provider in the field of virtual simulation education in all disciplines of medical science. The company's product is the "Metaverse Medical Training System", covering medical image 3D reconstruction and modeling, augmented reality technology, virtual reality technology, mixed reality technology

# EXHIBITORS

(BY BOOTH NUMBER)

100	Interact Solution
101	Elevate Healthcare
108	UbiSim Inc
109	Lumeto
116	Stealth Simulation
117	SIMStation Inc.
120	Vcom3D
123	Medical X
126	Simulation Training Resource
127	BVS Trade FZC
128	Sim2Grow
130	Medical Harbour
132	Biomed Simulation
133	Accurate srl
136	Dr. Hologram
137	Magic Ultrasound
143	MicroHealth LLC
144	Polytek Development Corp.
145	California Baptist University College of Nursing
146	Xiamen cube magic 3D technology co.Ltd
147	Sawbones
209	Simulab Corporation
217	TacMed Simulation
225	Avkin
227	The Chamberlain Group
229	PANCKOO INC.
233	The Debriefing Academy
236	Reynolds Advanced Materials
237	Anatomage, Inc.
242	MEDICFX
243	SIMBOOST
244	American Academy of Pediatrics Simulation Program
245	ProjectConcert
246	Anatomy Warehouse
247	LifeLine Mobile, Inc.
329	Operative Experience
337	Inovus Medical
342	Luna Labs USA
344	Med One Group
345	ORSIM by Airway Simulation Limited
346	KOKEN CO., LTD.
347	VirtaMed
400	Education Management Solutions
416	3B Scientific Group: 3B Scientific, Cardionics, iSimulate, Wallcur, Lifecast, IngMar, Innoging, ECHO Healthcare, VSI
429	INTELLIGENT ULTRASOUND NA INC.
437	Body Interact - Virtual Patients

Sponsors are highlighted

443	Center for Medical Simulation (CMS)
444	Ademsys Inc.
445	Northwestern University, Northwestern Simulation
446	NEWBASE Inc.
447	Mayo Clinic Multidisciplinary Simulation Centers
537	Kyoto Kagaku Co.,Ltd.
542	WISER
543	HealthySimulation.com
544	EHR Go
545	United Tissue Network, Inc
546	University of Washington, Division of Healthcare Simulation Science
547	Johns Hopkins University School of Nursing - Center for Simulation and Immersive Learning
601	Laerdal Medical
611	SimX VR
619	University of Miami Gordon Center for Simulation & Innovation in Medical Education
637	SonoSim, Inc.
642	Paradigm Medical Systems
643	Dynasthetics
644	MedtrainAI Technologies Private Limited
645	Immersify
646	Dimedus, Inc
647	National Training & Simulation Association (NTSA)
729	Nasco Healthcare
737	Pocket Nurse
742	Sim*Vivo
744	Health Scholars
745	Polhemus
746	The Apprentice Doctor
747	Bodyswaps
801	Gaumard Scientific
809	Surgical Science
817	Limbs & Things
829	neosim AG
837	PCS.ai
844	Decent Simulators
845	IMT Analytics AG
846	The Gathering of Healthcare Simulation Technology Specialists (SimGHOSTS)
847	Moulage Sciences and Training
909	Oxford Medical Simulation
917	Tellyes Scientific Inc.
929	MedVision
939	safeMedicate
941	BMK Ventures
942	RadSim
943	VATA
944	Orlando Health Strategic Innovations
945	DiaMedical
946	Vantari VR
1036	SurgMate Co., Ltd.
1037	BT Inc.

Sponsors are highlighted

# EXHIBIT HALL

1038	Cedars-Sinai Health System
1042	ChartFlow
1044	Patient Ready Inc.
1045	GTSimulators by Global Technologies
1046	Plan 3D
1047	SIMEDITA srls
1100	Wolters Kluwer
1108	Intelligent Video Solutions
1109	Medical Shipment
1116	Lumis
1120	Toltech
1131	SynDaver
1133	MedAffinity Corp
1137	Pedi-Ed-Trics Emergency Medical Solutions, LLC
1143	Erler-Zimmer GmbH & Co.KG
1145	MGH Institute of Health Professions
1146	AMFITRACK
1147	SimVS
1209	Elsevier
1211	AIBODY
1212	Innosonian America LLC
1213	Extreme Simulations, Ltd
1215	Medtribe
1217	HVS SYSTEMS
1218	AccessVR, LLC
1221	Adam,Rouilly
1225	VRpatients
1229	Tactile VR
1235	One World Design and Manufacturing Group
1237	3AM Technologies SimServeRx
1241	The University of Alabama at Birmingham
1243	Invidia Medical
1300	3-Dmed
1302	eTrainETC, LLC
1304	EdEHR Technologies Inc
1306	Genius Academy
1307	PRAC+SAFE
1308	BreakAway Games
1309	Medical Simulation Technologies
1312	MaxFi Surgical Simulations
1313	Case Western Reserve University
1314	MedVR Education
1315	Nanchang Virtual Reality Research Institute Co.
1316	Medability
1318	Safe Sleep Simulation
1321	Stratasys
1324	Sim U Suit, Inc.
1325	PHACON, INC.

Sponsors are highlighted



# Visit Gaumard at Booth #801

Where Training Meets Innovation



Discover our industry-leading advanced patient simulation solutions and be there for the unveiling of exciting new solutions.

**Join us at IMSH 2025** **Booth #801**



Learn more at  
[gaumard.com/imsh2025](https://gaumard.com/imsh2025)



**Gaumard**<sup>®</sup>  
Simulators for Health Care Education

[gaumard.com](https://gaumard.com)

Worldwide: 305-971-3790

Toll-Free U.S. and Canada: 800-882-6655

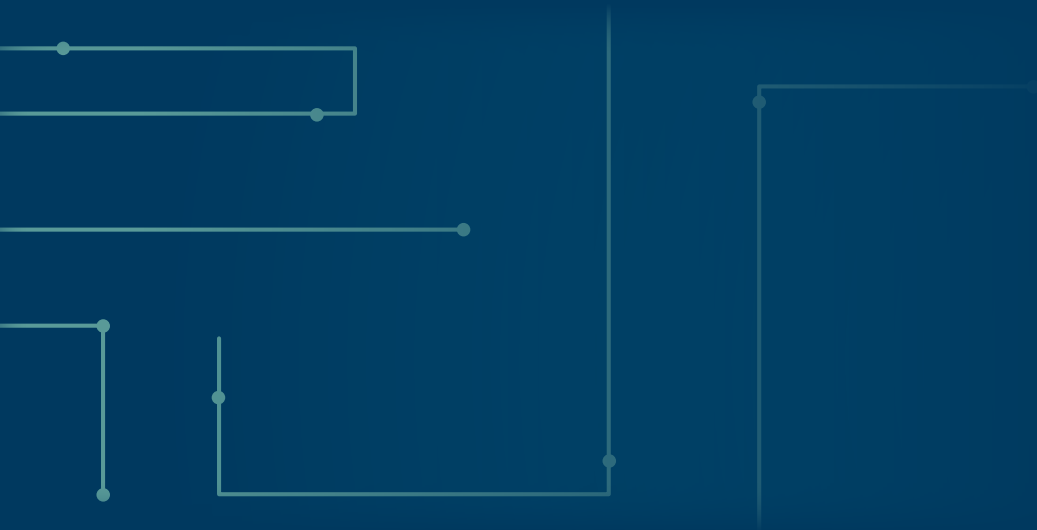


Society for Simulation in Healthcare

JANUARY 10 – 14, 2025 | ORLANDO, FL

25<sup>TH</sup> ANNIVERSARY

# LOOKING BACK REACHING FORWARD



IMSH2025.ORG | #IMSH2025  

